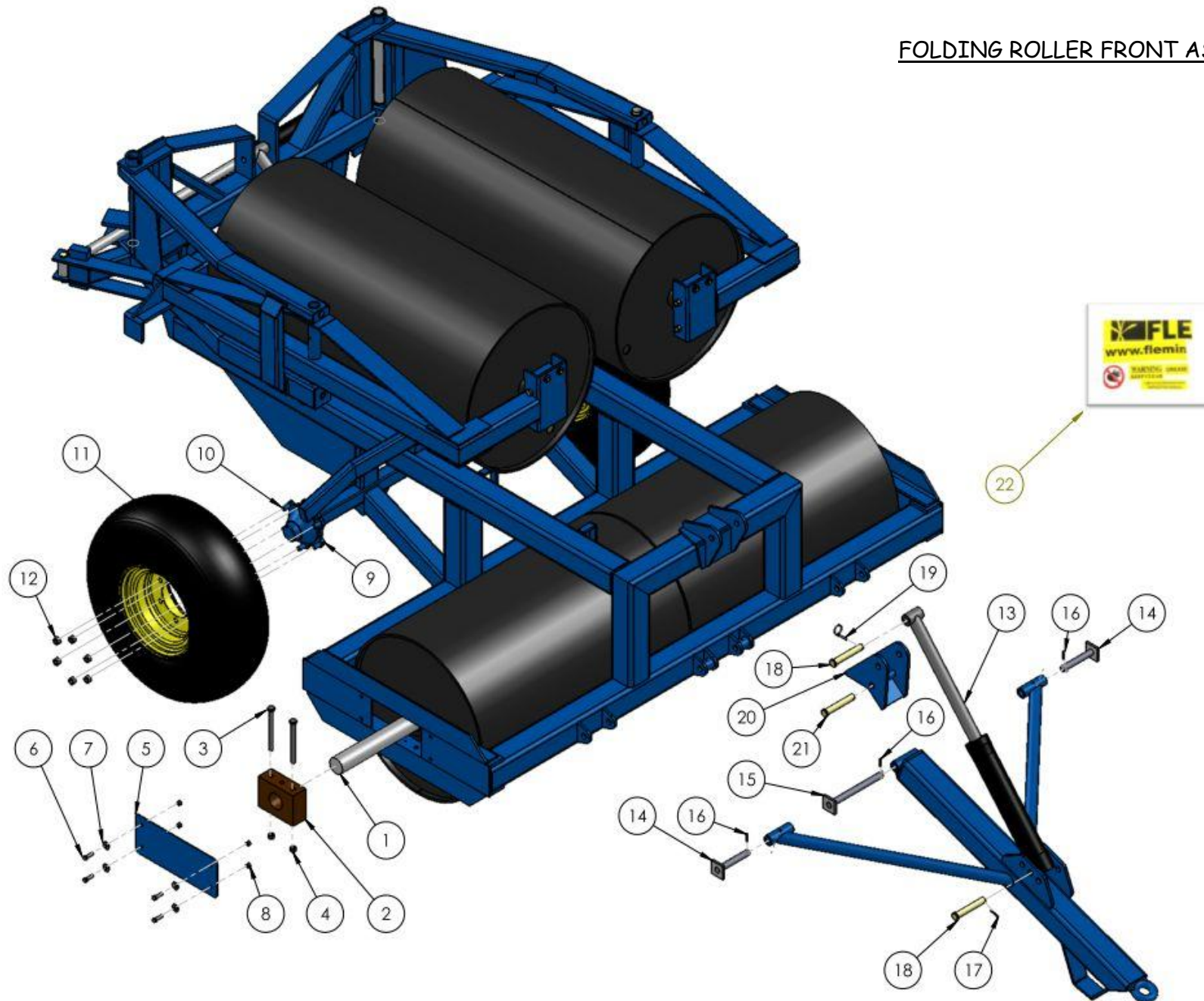


# FOLDING LAND ROLLER SPARE PARTS LIST



FOLDING ROLLER FRONT ASSEMBLY

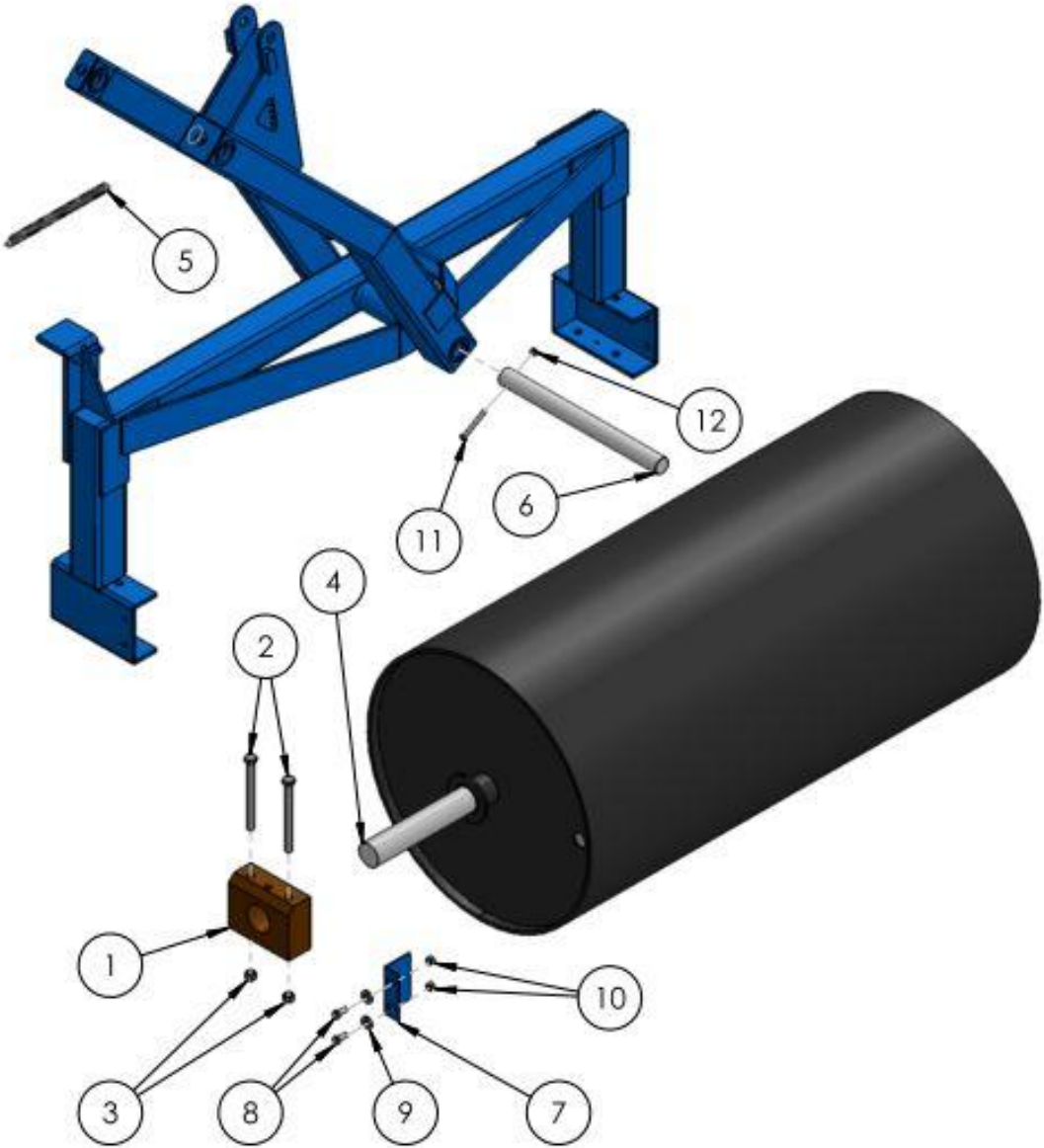


SEE TABLE NO: 001

**TABLE NO: 001 16ft & 18ft FOLDING ROLLER FRONT ASSEMBLY**

ITEM NO	DESCRIPTION	163010		183010		183010 2014+	
		CODE	QTY	CODE	QTY	CODE	QTY
1	CENTRE ROLLER SHAFT	P001.150	1	P001.151	1	P001.152	1
2	BEARING	ZGPP52	2	ZGPP52	2	ZGPP53	2
3	BOLT	ZFAS46	4	ZFAS46	4	ZFAS17	4
4	NYLOCK NUT	ZFAS22	4	ZFAS22	4	ZFAS23	4
5	BEARING COVER PLATE	P001.153	2	P001.153	2	P001.153	2
6	M12x40 SETSCREW	ZFAS51	8	ZFAS51	8	ZFAS51	8
7	M12 WASHER ZP	ZFAS45	8	ZFAS45	8	ZFAS45	8
8	M12 NYLOCK NUT	ZFAS22	8	ZFAS22	8	ZFAS22	8
9	AXLE COMPLETE	ZGPP153	1	ZGPP153	1	ZGPP153	1
10	WHEEL STUD	AX-18501.5	12	AX-18501.5	12	AX-18501.5	12
11	WHEEL COMPLETE	ZGPP20	2	ZGPP20	2	ZGPP20	2
12	WHEEL NUT	AX-181.5	12	AX-181.5	12	AX-181.5	12
13	HYDRAULIC RAM	ZGPP69	1	ZGPP69	1	ZGPP69	1
14	DRAWBAR OUTER PIN	P001.154	2	P001.154	2	P001.154	2
15	DRAWBAR CENTRE PIN	P001.155	1	P001.155	1	P001.155	1
16	M8x70 ROLL PIN	ZFAS29	3	ZFAS29	3	ZFAS29	3
17	M6x40 ROLL PIN	ZFAS30	1	ZFAS30	1	ZFAS30	1
18	RAM PIN	ZGPP96	1	ZGPP96	1	ZGPP96	1
19	M6x40 LINCH PIN	ZFAS34	2	ZFAS34	2	ZFAS34	2
20	SWIVEL TOP LINK	P001.156	1	P001.156	1	P001.156	1
21	SWIVEL TOP LINK PIN	P001.157	1	P001.157	1	P001.157	1
22	STICKER KIT	P001.532	1	P001.532	1	P001.532	1

FOLDING ROLLER WING ASSEMBLY (RHD & LHD)

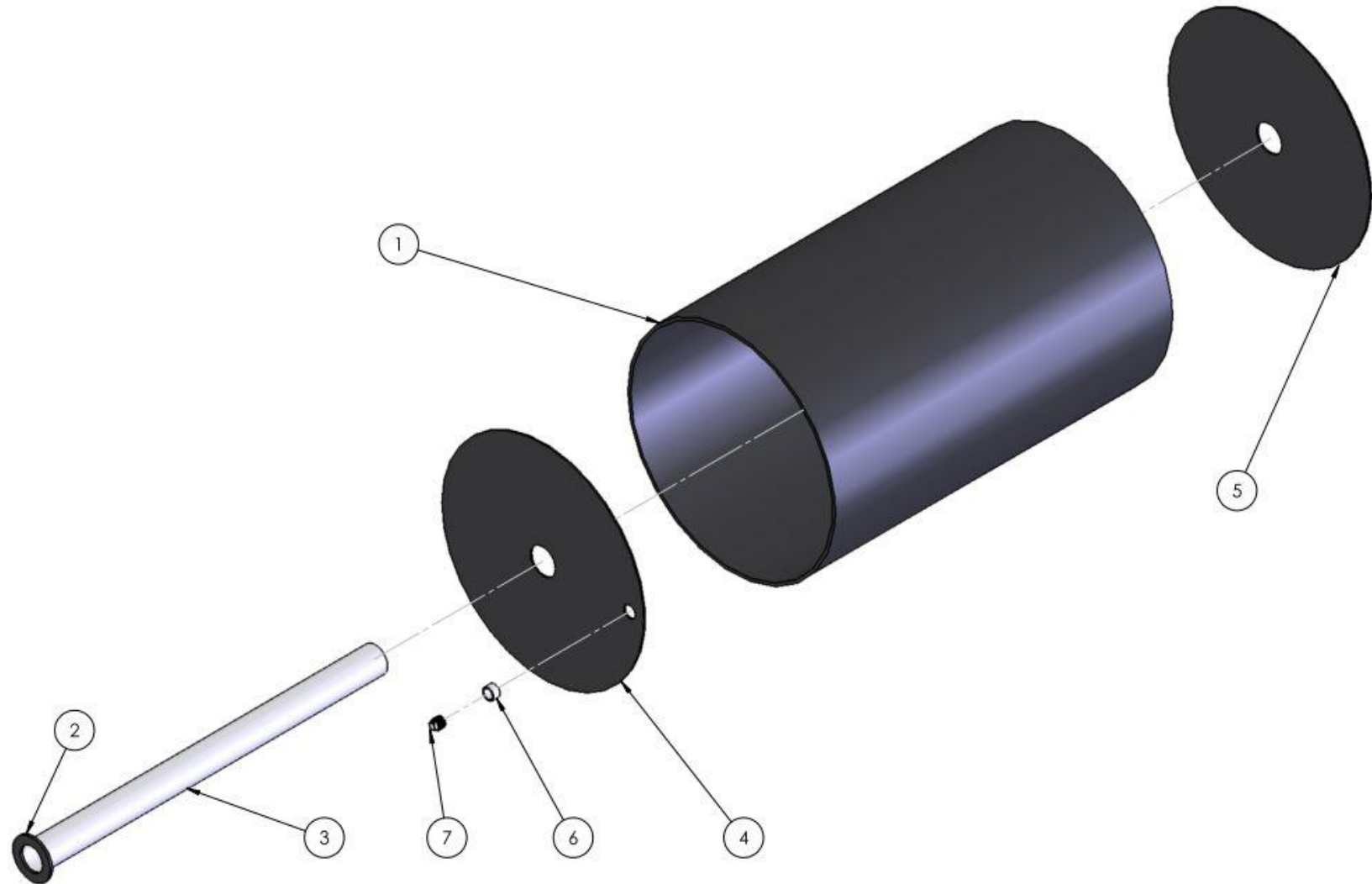


SEE TABLE NO: 002

**TABLE NO: 002 16ft & 18ft FOLDING ROLLER WING ASSEMBLY (RHD & LHD)**

ITEM NO	DESCRIPTION	163010		183010		183010 2014+	
		CODE	QTY	CODE	QTY	CODE	QTY
1	BEARING	ZGPP52	4	ZGPP53	4	ZGPP53	4
2	BOLT	ZFAS46	8	ZFAS46	8	ZFAS46	8
3	NYLOCK NUT	ZFAS22	8	ZFAS22	8	ZFAS23	8
4	OUTER ROLLER SHAFT	P001.158	1	P001.159	1	P001.159	1
5	SPRING	ZSPR07	2	ZSPR07	4	ZSPR07	4
6	PIVOT PIN	P001.160	2	P001.160	2	P001.160	2
7	BEARING COVER PLATE	P001.161	4	P001.161	4	P001.161	4
8	M12x30 SETSCREW	ZFAS10	8	ZFAS10	8	ZFAS10	8
9	M12 WASHER ZP	ZFAS45	8	ZFAS45	8	ZFAS45	8
10	M12 NYLOCK NUT	ZFAS22	8	ZFAS22	8	ZFAS22	8
11	M10x80 BOLT	ZFAS40	2	ZFAS40	2	ZFAS40	2
12	M10 NYLOCK NUT ZP	ZFAS20	2	ZFAS20	2	ZFAS20	2

FOLDING ROLLER CENTRE DRUM ASSEMBLY

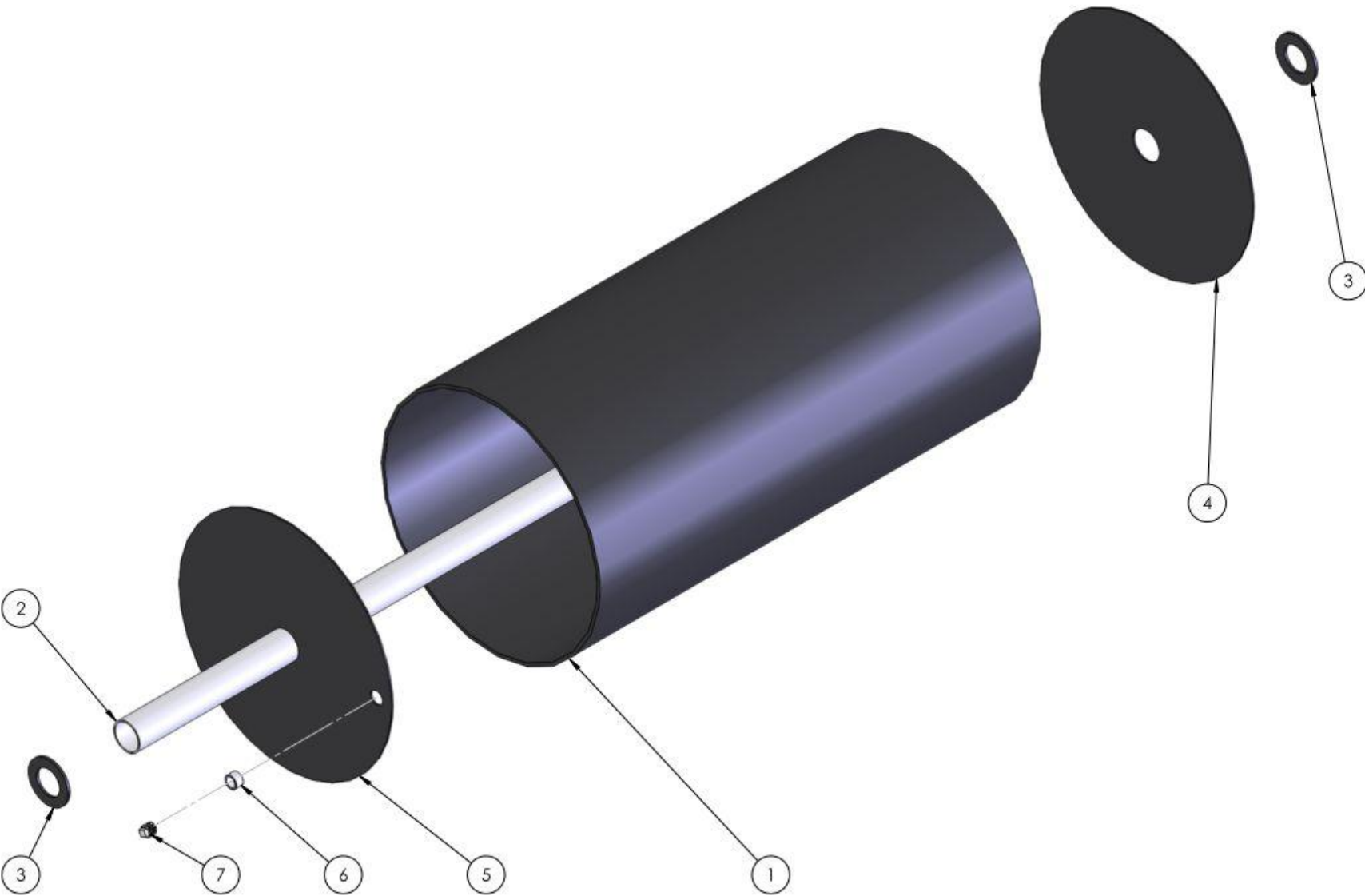


SEE TABLE NO: 003

**TABLE NO: 003 16ft & 18ft FOLDING ROLLER CENTRE DRUM ASSEMBLY**

ITEM NO	DESCRIPTION	163010		183010		183010 2014+	
		CODE	QTY	CODE	QTY	CODE	QTY
1	COMPLETE BARRELL (ALL ITEMS)	P001.095	2	P001.096	2	P001.162	2
2	END WASHER	ZPPA20	2	ZPPA20	2	ZPPA21	2
3	CENTRE PIPE PLUS WASHER	P001.097	2	P001.097	2	P001.163	2
4	END DISC C/W DRAIN HOLE	ZPPA16A	2	ZPPA199A	2	ZPPA16A	2
5	END DISC	ZPPA16	2	ZPPA199	2	ZPPA16	2
6	1" SOCKET	ZFAS33	2	ZFAS33	2	ZFAS33	2
7	1" BUNG	ZFAS32	2	ZFAS32	2	ZFAS32	2

FOLDING ROLLER OUTER DRUM ASSEMBLY



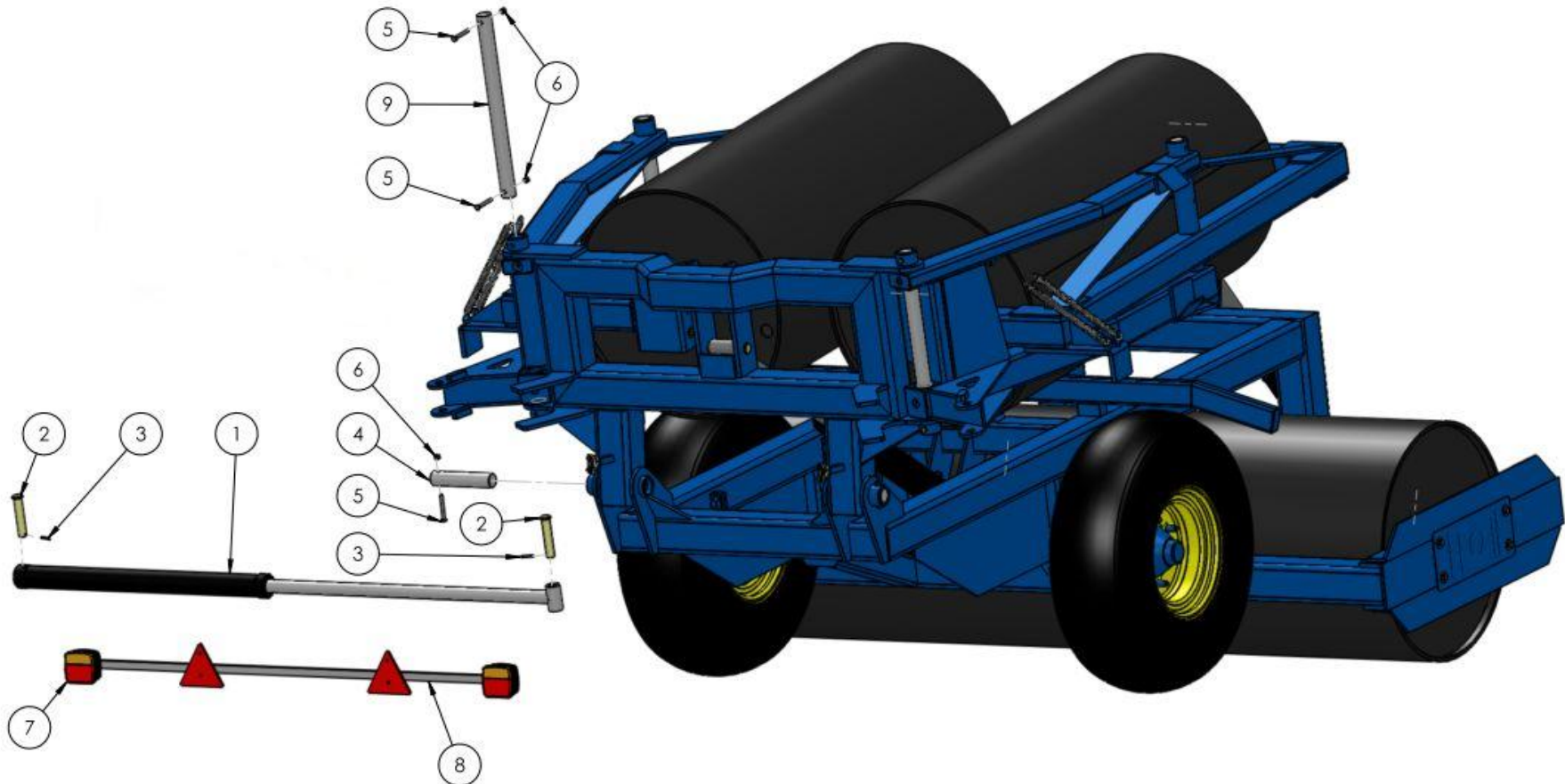
SEE TABLE NO: 004



**TABLE NO: 004 16ft & 18ft FOLDING ROLLER OUTER DRUM ASSEMBLY**

ITEM NO	DESCRIPTION	163010		183010		183010 2014+	
		CODE	QTY	CODE	QTY	CODE	QTY
1	COMPLETE BARRELL (ALL ITEMS)	P001.164	2	P001.165	2	P001.165	2
2	CENTRE PIPE PLUS WASHER	P001.166	2	P001.167	2	P001.167	2
3	END WASHER	ZPPA20	4	ZPPA21	4	ZPPA21	4
4	END DISC	ZPPA16	2	ZPPA199	2	ZPPA16	2
5	END DISC C/W DRAIN HOLE	ZPPA16A	2	ZPPA199A	2	ZPPA16A	2
6	1" SOCKET	ZFAS33	2	ZFAS33	2	ZFAS33	2
7	1" BUNG	ZFAS32	2	ZFAS32	2	ZFAS32	2

FOLDING ROLLER REAR VIEW

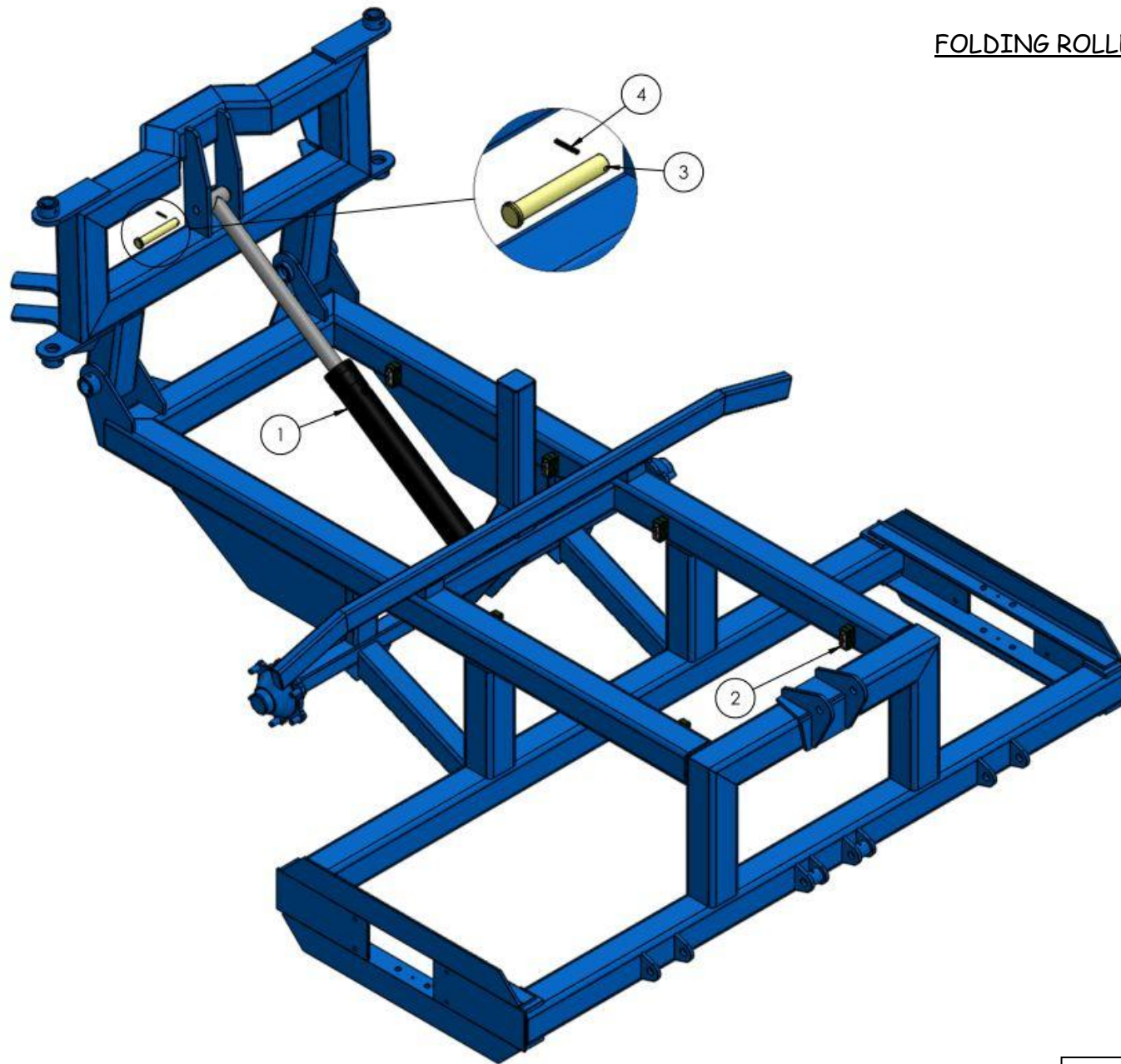


SEE TABLE NO: 005

**TABLE NO: 005 16ft & 18ft FOLDING ROLLER REAR ASSEMBLY**

ITEM NO	DESCRIPTION	163010		183010		183010 2014+	
		CODE	QTY	CODE	QTY	CODE	QTY
1	HYDRAULIC RAM	ZGPP75	1	ZGPP75	1	ZGPP75	1
2	RAM PIN	ZGPP95	2	ZGPP95	2	ZGPP95	2
3	M6x40 ROLL PIN	ZFAS30	2	ZFAS30	2	ZFAS30	2
4	PIVOT PIN	P001.168	2	P001.168	2	P001.168	2
5	M10x80 BOLT	ZFAS40	6	ZFAS40	6	ZFAS40	6
6	M10 NYLOCK NUT ZP	ZFAS20	6	ZFAS20	6	ZFAS20	6
7	TAIL LIGHT LENSE	L16RMS	2	L16RMS	2	L16RMS	2
8	LIGHT BAR COMPLETE	ZGPP168	1	ZGPP168	1	ZGPP168	1
9	PIVOT PIN	P001.169	2	P001.169	2	P001.169	2

FOLDING ROLLER CENTRE RAM

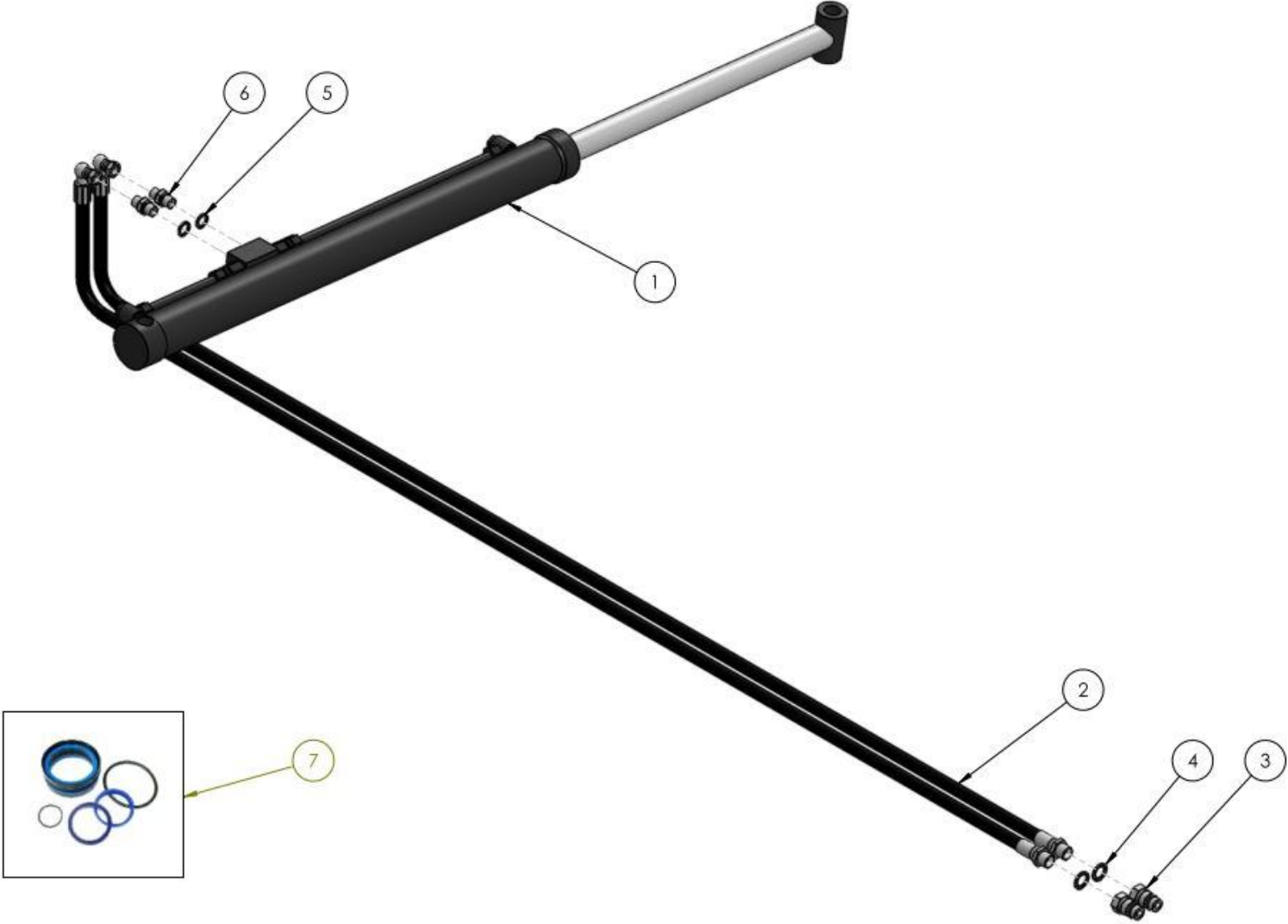


SEE TABLE NO: 006

**TABLE NO: 006 16ft & 18ft FOLDING ROLLER CENTRE RAM**

ITEM NO	DESCRIPTION	163010		183010		183010 2014+	
		CODE	QTY	CODE	QTY	CODE	QTY
1	HYDRAULIC RAM	ZGPP76	1	ZGPP76	1	ZGPP76	1
2	HYDRAULIC HOSE HOLDER	ZHYD14	6	ZHYD14	6	ZHYD14	6
3	RAM PIN	ZGPP95	2	ZGPP95	2	ZGPP95	2
4	M6x40 ROLL PIN	ZFAS30	2	ZFAS30	2	ZFAS30	2

FOLDING ROLLER REAR HYDRAULIC RAM ASSEMBLY

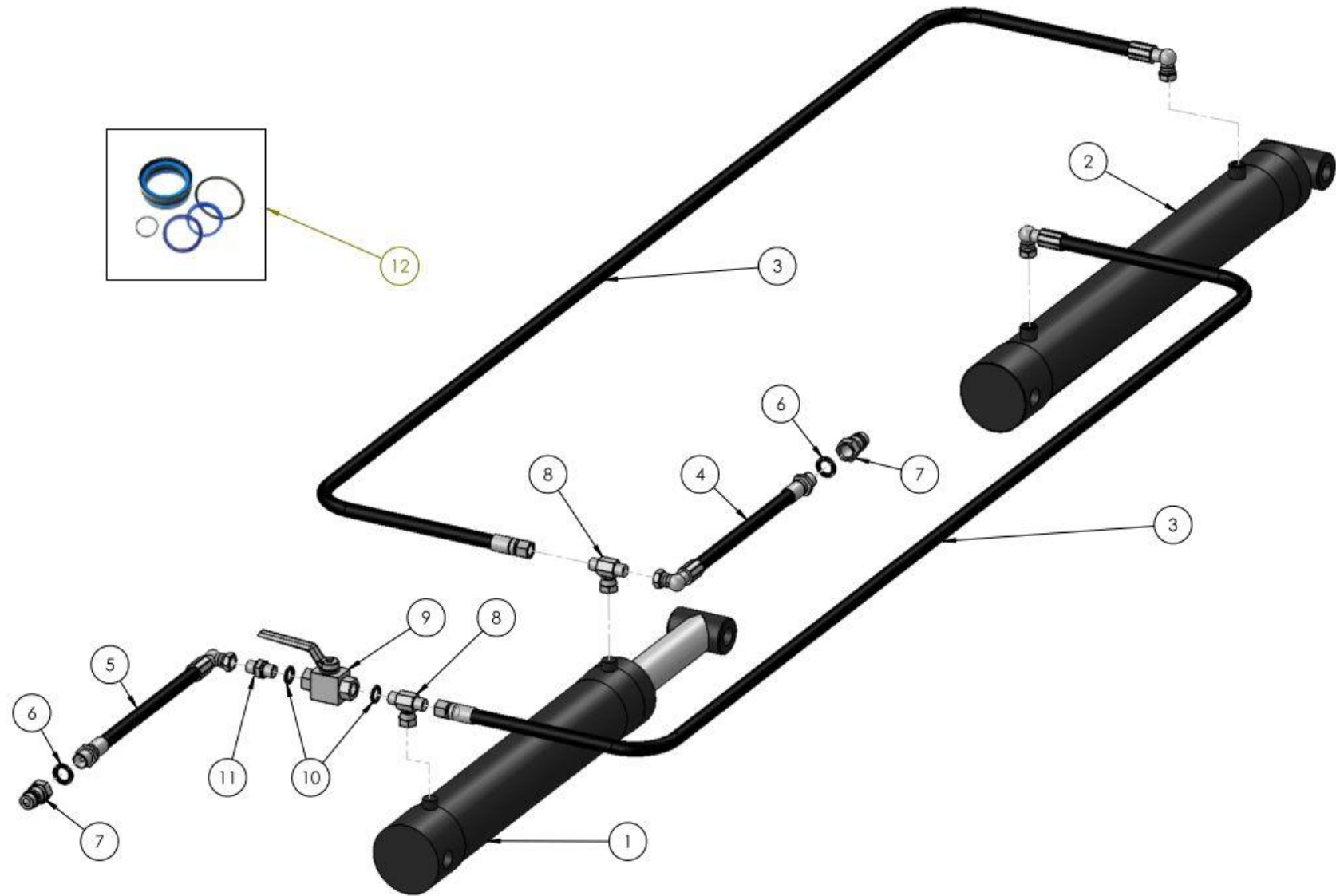


SEE TABLE NO: 007

**TABLE NO: 007 16ft & 18ft FOLDING REAR HYDRAULIC RAM ASSEMBLY**

ITEM NO	DESCRIPTION	163010		183010		183010 2014+	
		CODE	QTY	CODE	QTY	CODE	QTY
1	HYDRAULIC RAM	ZGPP75	1	ZGPP75	1	ZGPP75	1
2	HYDRAULIC HOSE COMPLETE	ZGPP78	2	ZGPP78	2	ZGPP78	2
3	½" MALE PROBE	ZHYD26	2	ZHYD26	2	ZHYD26	2
4	½" DOWDY WASHER	ZHYD22	2	ZHYD22	2	ZHYD22	2
5	3/8" DOWDY WASHER	ZHYD05	2	ZHYD05	2	ZHYD05	2
6	3/8" ADAPTOR	ZHYD03	2	ZHYD03	2	ZHYD03	2
7	HYDRAULIC SEAL KIT	HYDSK6	1	HYDSK6	1	HYDSK6	1

FOLDING ROLLER HYDRAULIC ASSEMBLY



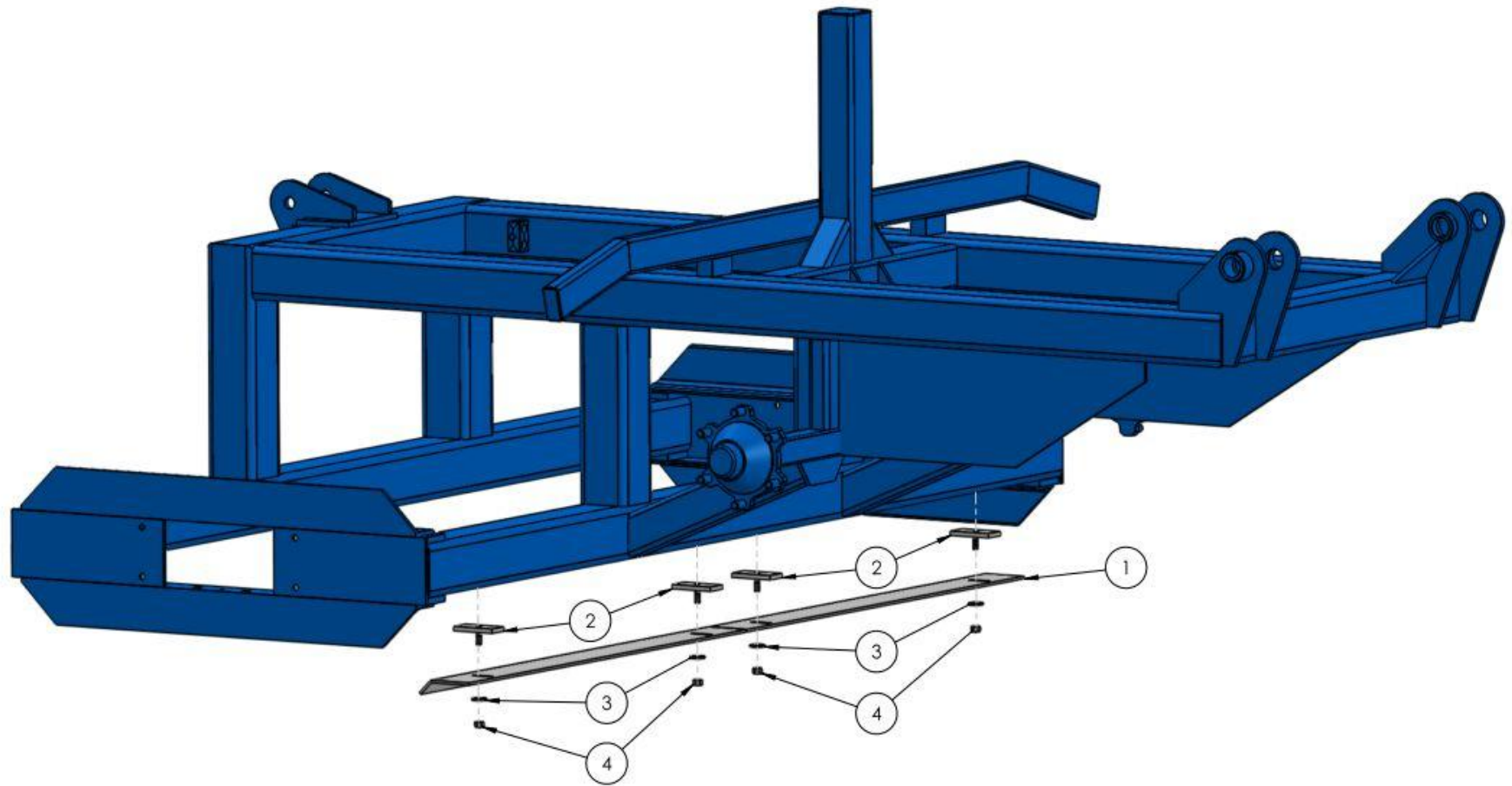
SEE TABLE NO: 008



**TABLE NO: 008 16ft & 18ft FOLDING ROLLER HYDRAULIC ASSEMBLY**

ITEM NO	DESCRIPTION	163010		183010		183010 2014+	
		CODE	QTY	CODE	QTY	CODE	QTY
1	HYDRAULIC RAM	ZGPP69	1	ZGPP69	1	ZGPP69	1
2	HYDRAULIC RAM	ZGPP76	1	ZGPP76	1	ZGPP76	1
3	HYDRAULIC HOSE COMPLETE	ZGPP78	2	ZGPP78	2	ZGPP78	2
4	HYDRAULIC HOSE COMPLETE	ZGPP61	2	ZGPP61	2	ZGPP61	2
5	HYDRAULIC HOSE COMPLETE	ZGPP63	2	ZGPP63	2	ZGPP63	2
6	½" DOWDY WASHER	ZHYD22	2	ZHYD22	2	ZHYD22	2
7	½" MALE PROBE	ZHYD26	2	ZHYD26	2	ZHYD26	2
8	T CONNECTOR	ZHYD37	2	ZHYD37	2	ZHYD37	2
9	SHUT OFF VALVE	ZHYD04	1	ZHYD04	1	ZHYD04	1
10	3/8" DOWDY WASHER	ZHYD05	2	ZHYD05	2	ZHYD05	2
11	3/8" ADAPTOR	ZHYD03	2	ZHYD03	2	ZHYD03	2
12	HYD SEAL KIT (suits both rams)	HYDSK7	1	HYDSK7	1	HYDSK7	1

FOLDING ROLLER CENTRE DRUM SCRAPER ASSEMBLY

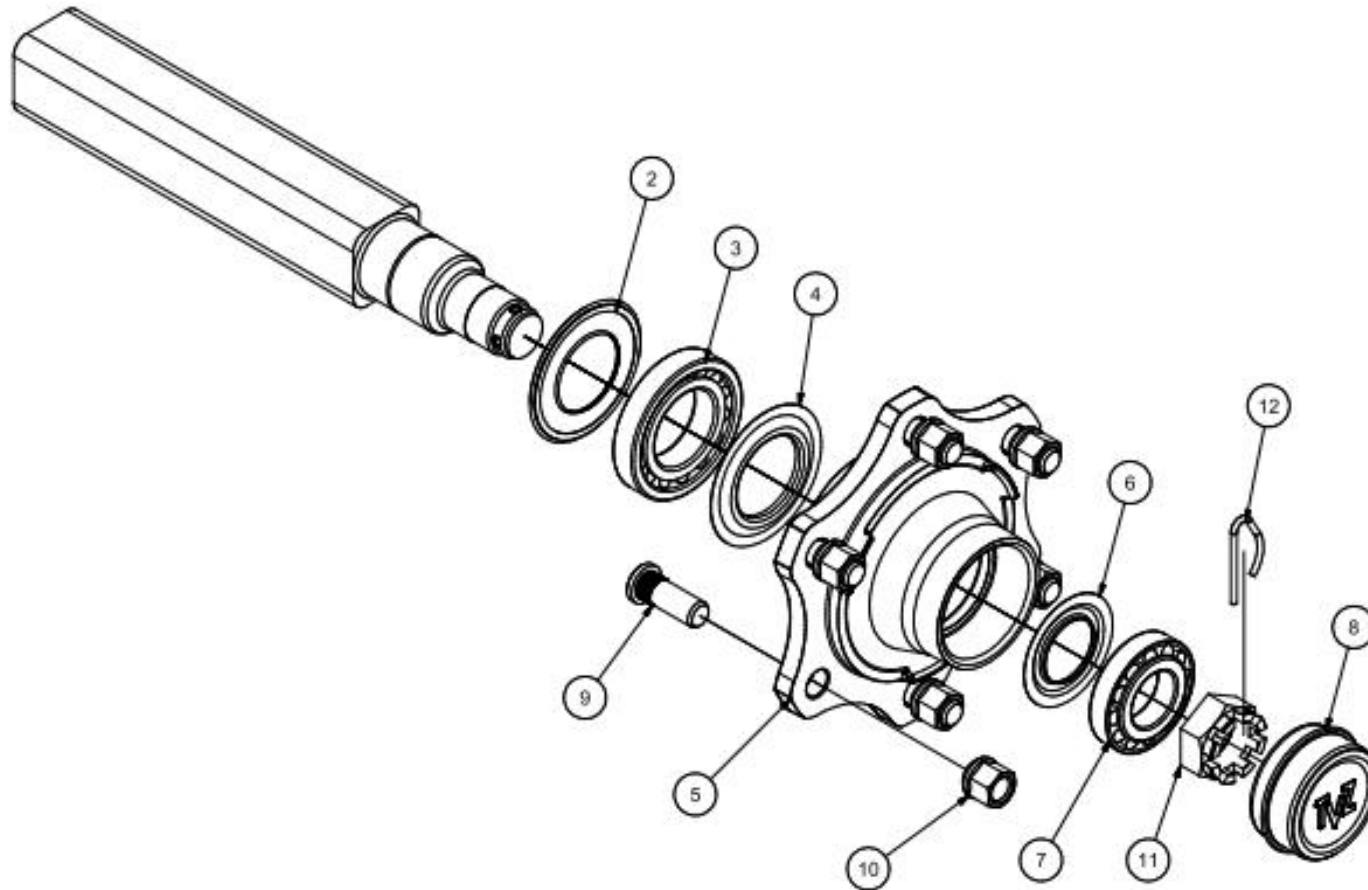


SEE TABLE NO: 009

**TABLE NO: 009 16ft & 18ft FOLDING ROLLER CENTRE DRUM SCRAPER ASSEMBLY**

ITEM NO	DESCRIPTION	163010		183010		183010 2014+	
		CODE	QTY	CODE	QTY	CODE	QTY
1	SCRAPER KIT	8SB	1	8SB	1	8SB	1
2	SCRAPER BLADE LOCATOR BRACKET	P001.149	4	P001.149	4	P001.149	4
3	M12 PLAIN WASHER ZP	ZFAS45	4	ZFAS45	4	ZFAS45	4
4	M12 NYLOCK NUT	ZFAS22	4	ZFAS22	4	ZFAS22	4

18ft FOLDING ROLLER AXLE PART NUMBER ZGPP153



SEE TABLE NO: 010

<b>TABLE NO: 010 18' FOLDING ROLLER TVZ AXLE</b>			
<b>ZGPP153</b>			
<b>ITEM</b>	<b>PART NO.</b>	<b>QTY.</b>	<b>DESCRIPTION:</b>
1	ZGPP153	1	AXLE COMPLETE
2	AX-5411001	2	REAR SEAL
3	AX-59130211	2	REAR BEARING
4	AX-5511001	2	INNER SEAL
5	AX-61L6LA008	2	HUB
6	AX-5510801	2	OUTER SEAL
7	AX-59130208	2	OUTER BEARING
8	AX-56108009	2	DUST CAP
9	AX-18501.5	2	AXLE STUD 18mmx1.5mmx50mm
10	AX-181.5	2	AXLE NUT 18mmx1.5mm
11	AX-57539B1	12	CASTLE NUT
12	AX-58205	12	SPRING PIN

