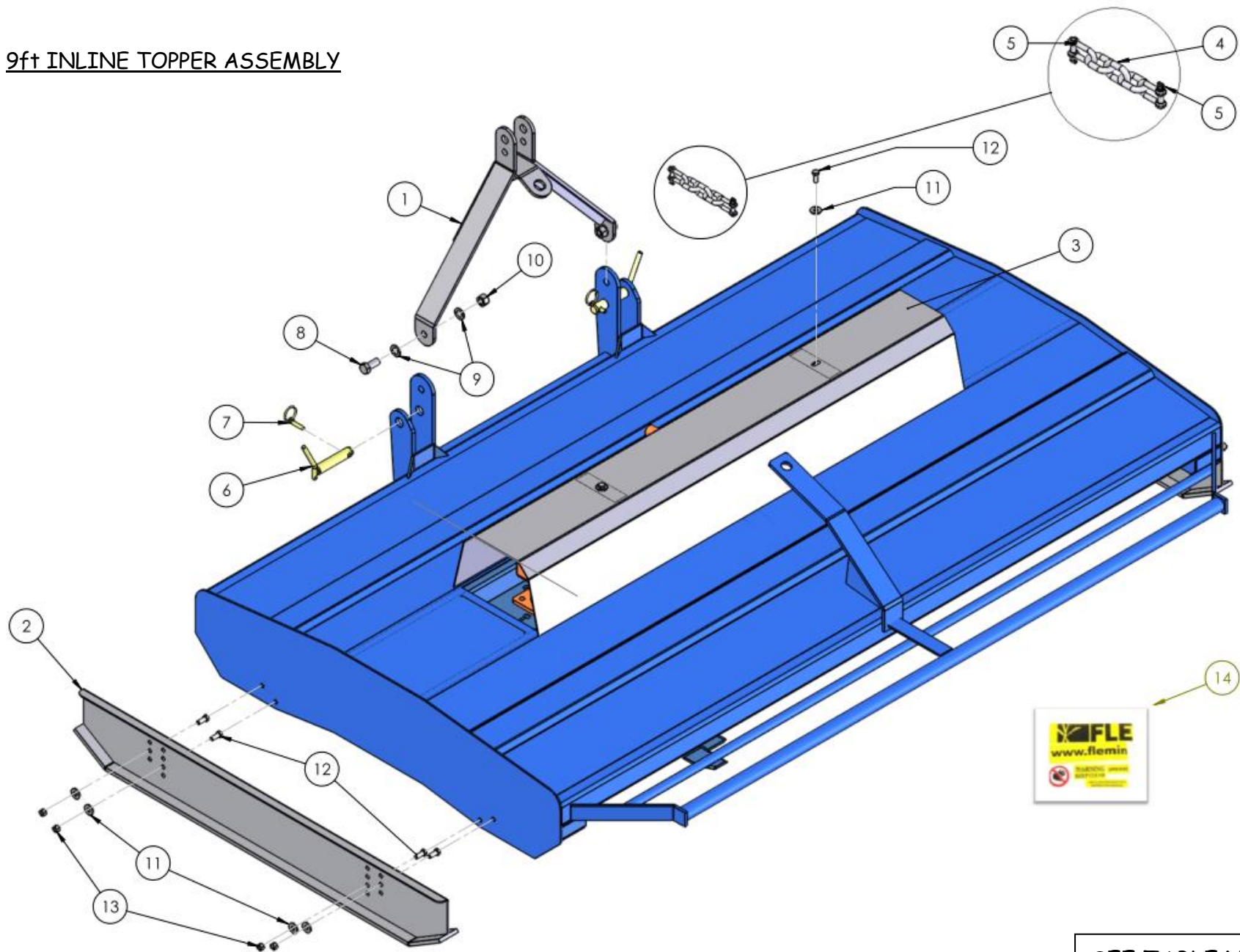


# 9' INLINE TOPPER

## SPARE PARTS LIST



9ft INLINE TOPPER ASSEMBLY

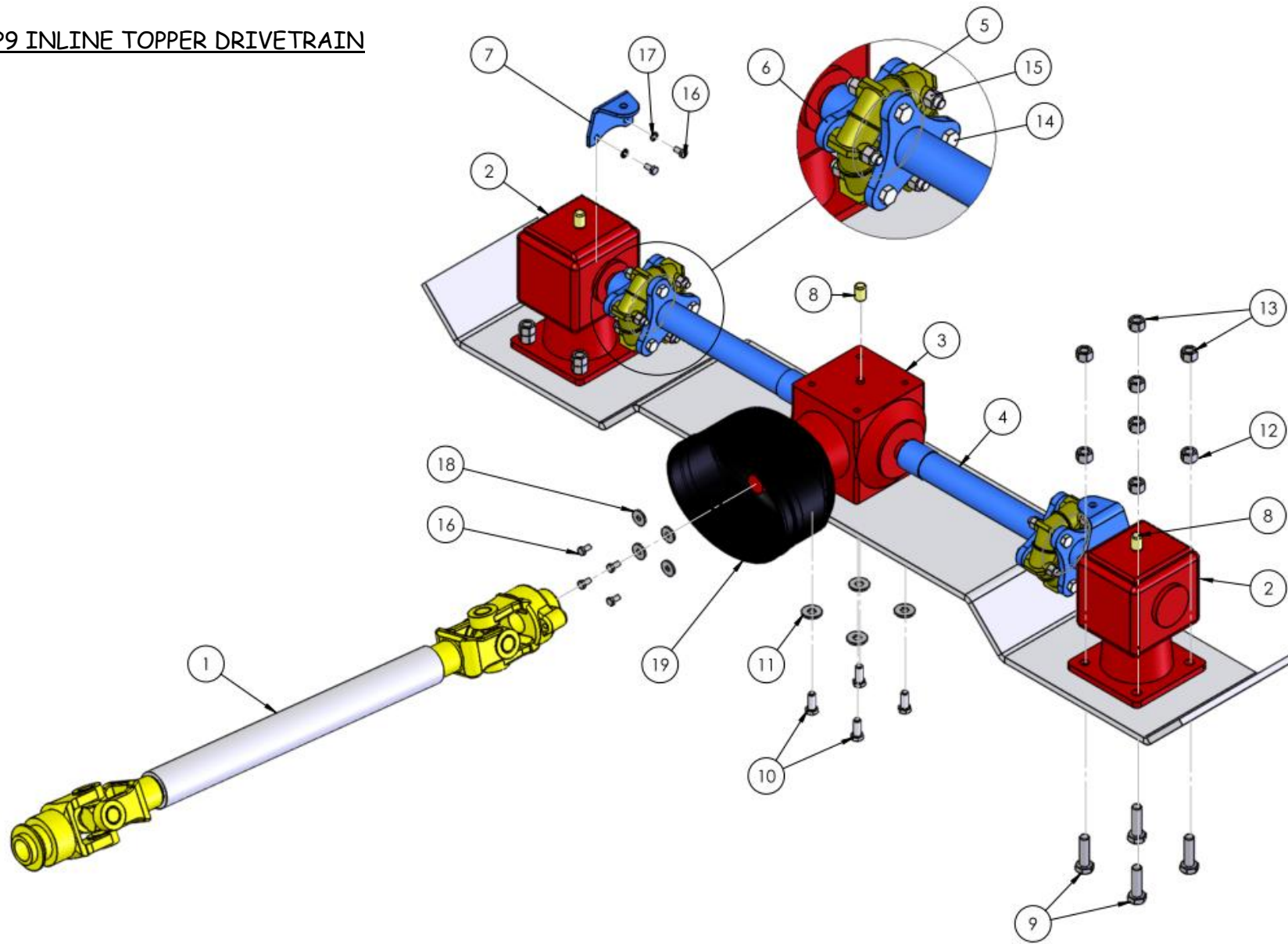


SEE TABLE NO: 001

**TABLE NO: 001 9ft INLINE GRASS TOPPER ASSEMBLY**

ITEM NO	DESCRIPTION	TOP9		TOP9HDIN	
		CODE	QTY	CODE	QTY
1	TOPPER A-FRAME	P001.054	1	P001.054	1
2	GRASS TOPPER SKID	P001.055	2	P001.055	2
3	GEARBOX COVER	P001.056	1	P001.057	1
4	GRASS TOPPER CHAIN	P001.058	1	P001.058	1
5	16mm D-SHACKLE	ZGPP13	1	ZGPP13	1
6	CAT2 LIFT ARM PIN	ZGPP62	2	ZGPP62	2
7	M10x40 LINCH PIN	ZFAS31	2	ZFAS31	2
8	M20x55 SETSCREW	ZFAS37	2	ZFAS37	2
9	M20 WASHER ZP	ZFAS39	4	ZFAS39	4
10	M20 NYLOCK NUT	ZFAS24	2	ZFAS24	2
11	M12 WASHER ZP	ZFAS45	10	ZFAS45	10
12	M12x30 SETSCREW	ZFAS10	10	ZFAS10	10
13	M12 NYLOCK NUT	ZFAS22	10	ZFAS22	10
14	TOP9 STICKER KIT	P001.536	1	P001.536	1

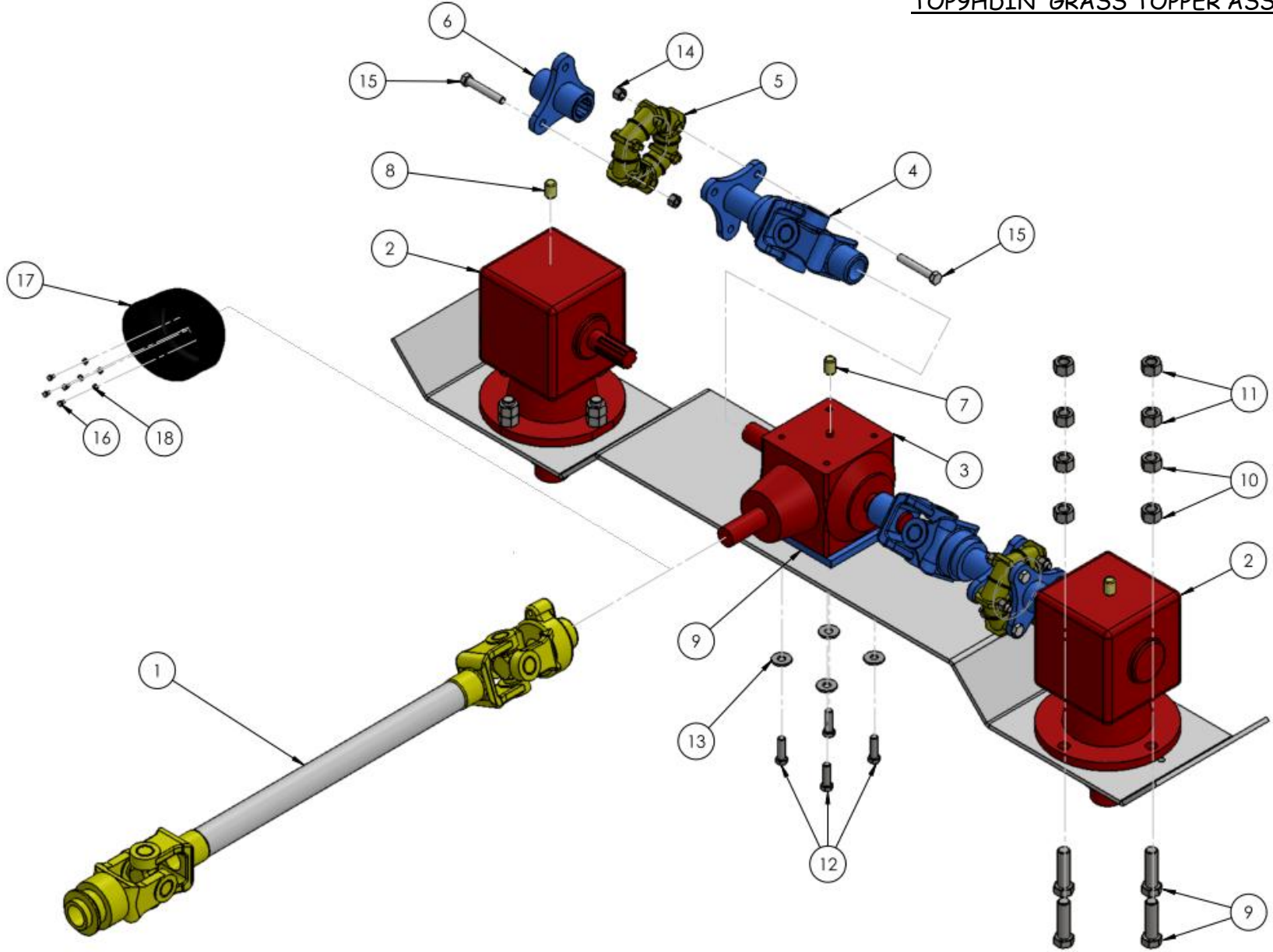
TOP9 INLINE TOPPER DRIVETRAIN



SEE TABLE NO: 002

TABLE NO: 002 TOP9 GRASS TOPPER DRIVETRAIN			
ITEM NO	DESCRIPTION	9FT GRASS TOPPER	
		CODE	QTY
1	OVER RUN PTO SHAFT C/W SHEARBOLT	ZGPP84	1
2	END GEARBOX	ZGPP56	2
3	CENTRE GEARBOX	ZGPP57	1
4	CONNECTING DRIVESHAFT	ZGPP118	2
5	RUBBER SHOCK ABSORBER	ZGPP82	2
6	TRIPOD COUPLING	ZGPP116	2
7	GEARBOX COVER BRACKET	ZPPA57	2
8	BREATHER BUNG	ZGPP24	3
9	M16x55 BOLT ZP	ZFAS62	8
10	M12x30 SETSCREW	ZFAS10	4
11	M12 SPRING WASHER ZP	ZFAS76	4
12	M16 PLAIN NUT	ZFAS63	8
13	M16 NYLOCK NUT	ZFAS23	8
14	M12x80 BOLT	ZFAS47	12
15	M12 NYLOCK NUT	ZFAS22	12
16	M8x16 SETSCREW	ZFAS08	4
17	M8 SPRING WASHER	ZFAS72	4
18	M8 WASHER ZP	ZFAS61	4
19	OVAL P.T.O / GEARBOX COVER	ZGPP86	1

TOP9HDIN GRASS TOPPER ASSEMBLY



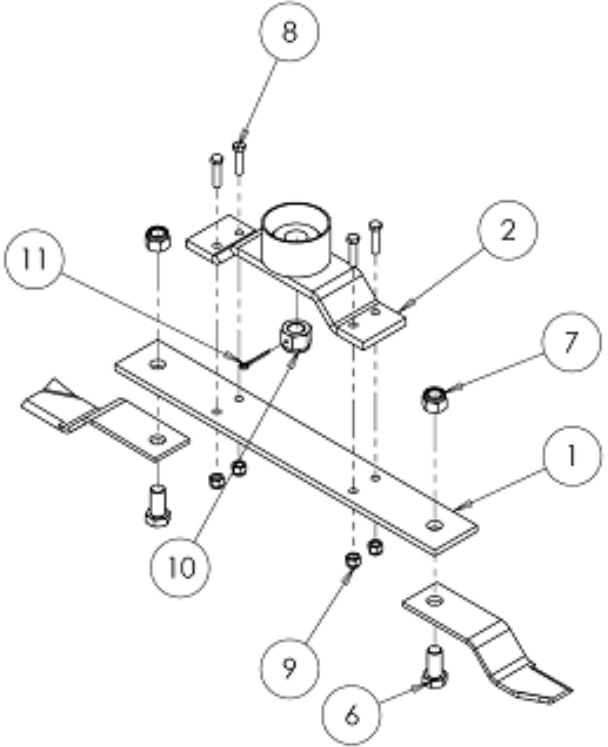
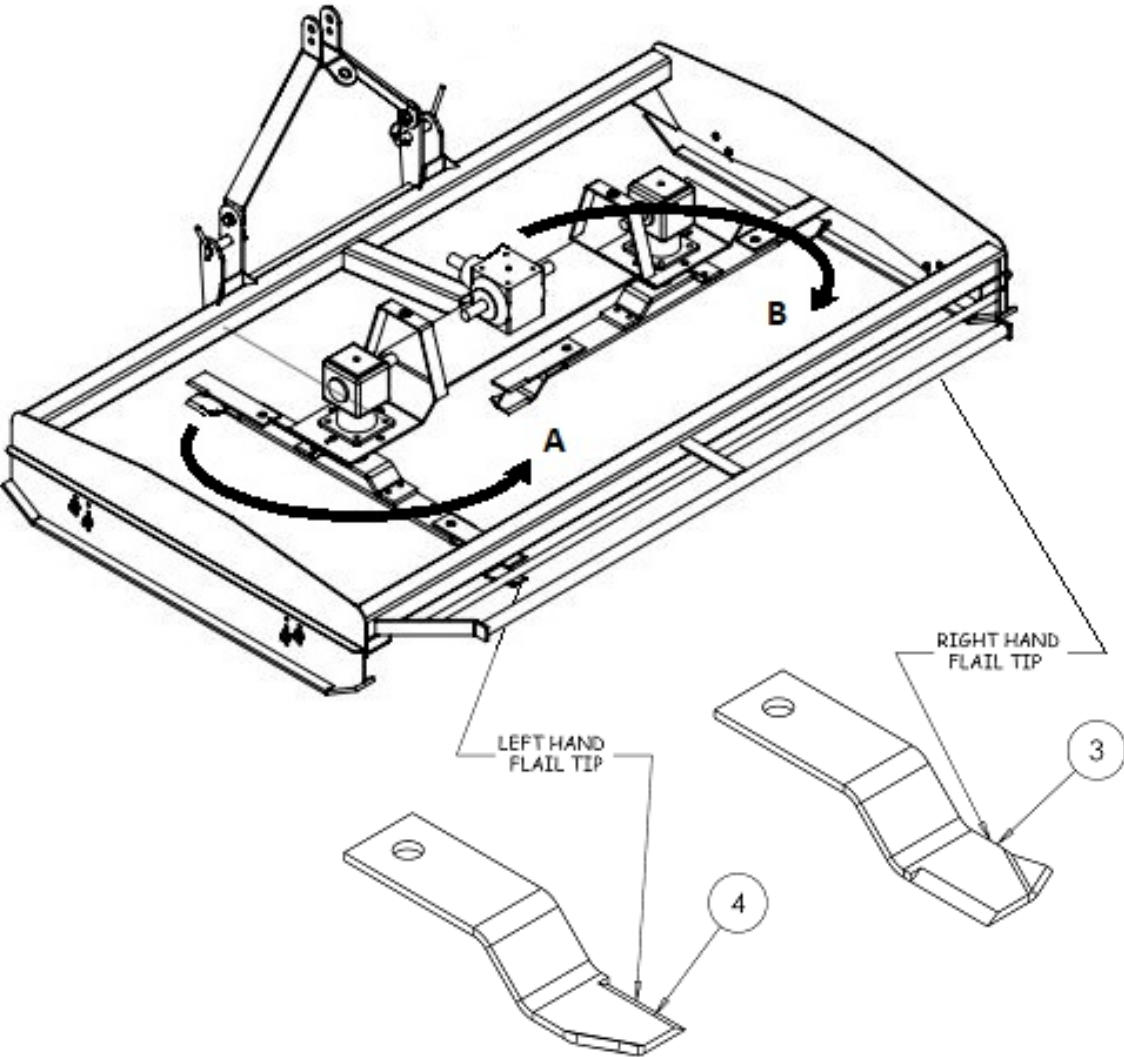
SEE TABLE NO: 003

TABLE NO: 003 TOP9HDIN GRASS TOPPER DRIVETRAIN			
ITEM NO	DESCRIPTION	9FT HD GRASS TOPPER	
		CODE	QTY
1	OVER RUN PTO SHAFT C/W SHEARBOLT	ZGPP84	1
2	END GEARBOX	ZGPP105	2
3	CENTRE GEARBOX	ZGPP57	1
4	CONNECTING DRIVESHAFT	ZGPP112	2
5	RUBBER SHOCK ABSORBER	ZGPP82	2
6	TRIPOD COUPLING	ZGPP116	2
7	BREATHER BUNG	ZGPP24	1
8	1/2" BREATHER PLUG	ZGPP173	2
9	M20x70 BOLT ZP	ZFAS108	8
10	M20 PLAIN NUT	ZFAS74	8
11	M20 NYLOCK NUT	ZFAS20	8
12	M12x40 SETSCREW	ZFAS51	4
13	M12 SPRING WASHER ZP	ZFAS76	4
14	M12 NYLOCK NUT	ZFAS22	12
15	M12x80 BOLT	ZFAS47	12
16	M8x16 SETSCREW	ZFAS08	4
17	OVAL P.T.O / GEARBOX COVER	ZGPP86	1
18	M8 WASHER ZP	ZFAS61	4

TOP9 GRASS TOPPER ROTOR ASSEMBLY

**A: LEFT HAND ROTOR**

**B: RIGHT HAND ROTOR**

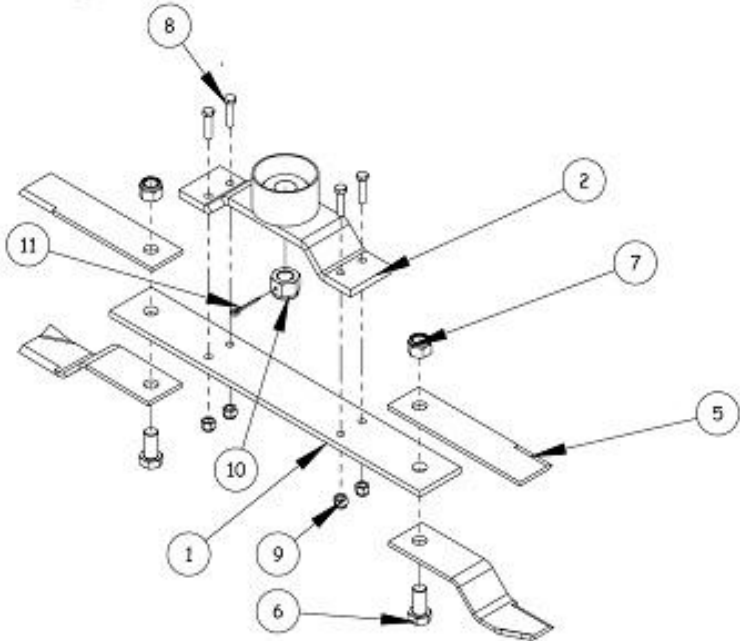
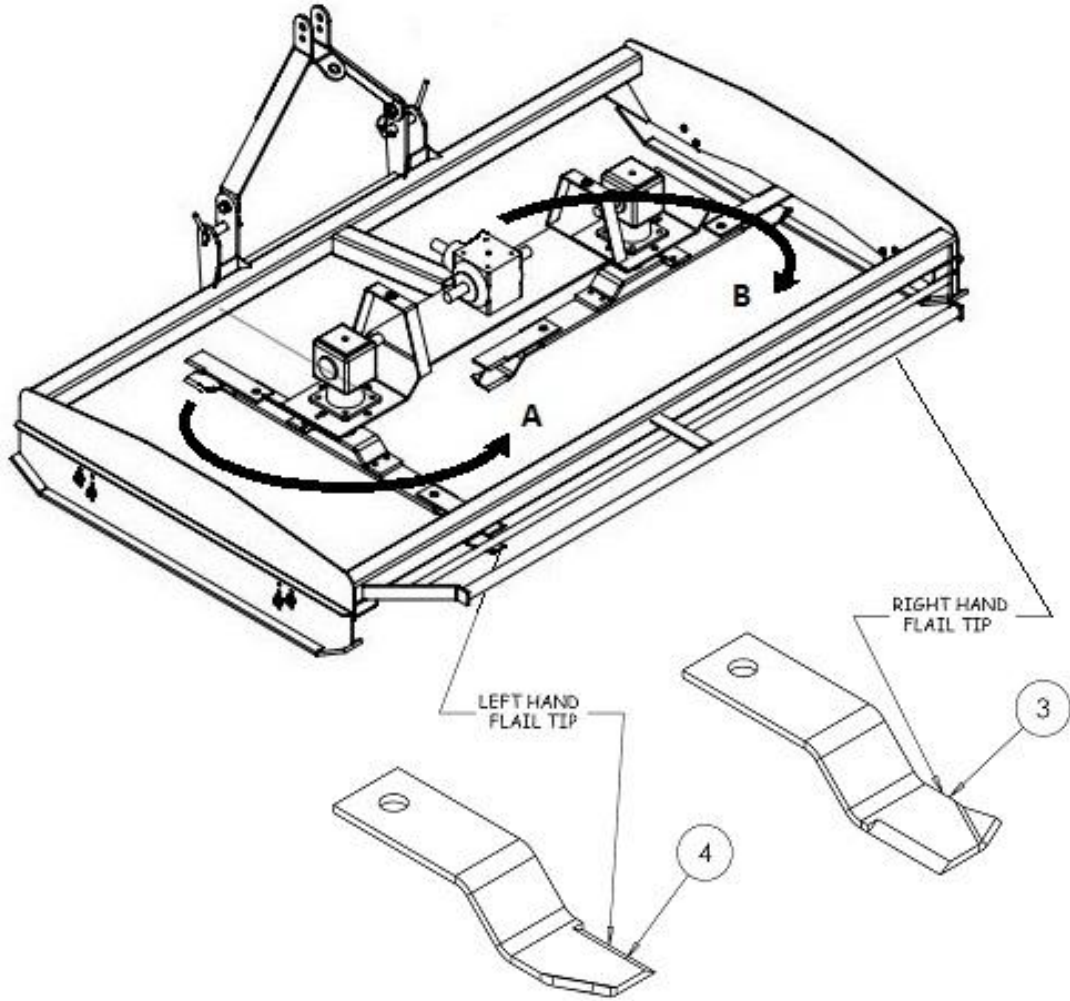


SEE TABLE NO: 004



TABLE NO: 004 TOP9 GRASS TOPPER ROTOR ASSEMBLY			
ITEM NO	DESCRIPTION	TOP9	
		CODE	QTY
1	900mm ROTOR BAR	ZGPP64	2
2	ROTAR BAR HOLDER	ZGPP65B	2
3	TOPPER BLADE RIGHT HAND	ZGPP07	2
4	TOPPER BLADE LEFT HAND	ZGPP85	2
6	M24 x 50 BOLT	ZFAS09	4
7	M24 NYLOCK	ZFAS21	4
8	M14 x 50 BOLT	ZFAS41	8
9	M14 NYLOCK	ZFAS42	8
10	TOPPER CASTLE NUT	8.2.2.00515	2
11	2" x 3/16" COTTER PIN	ZFAS58	2

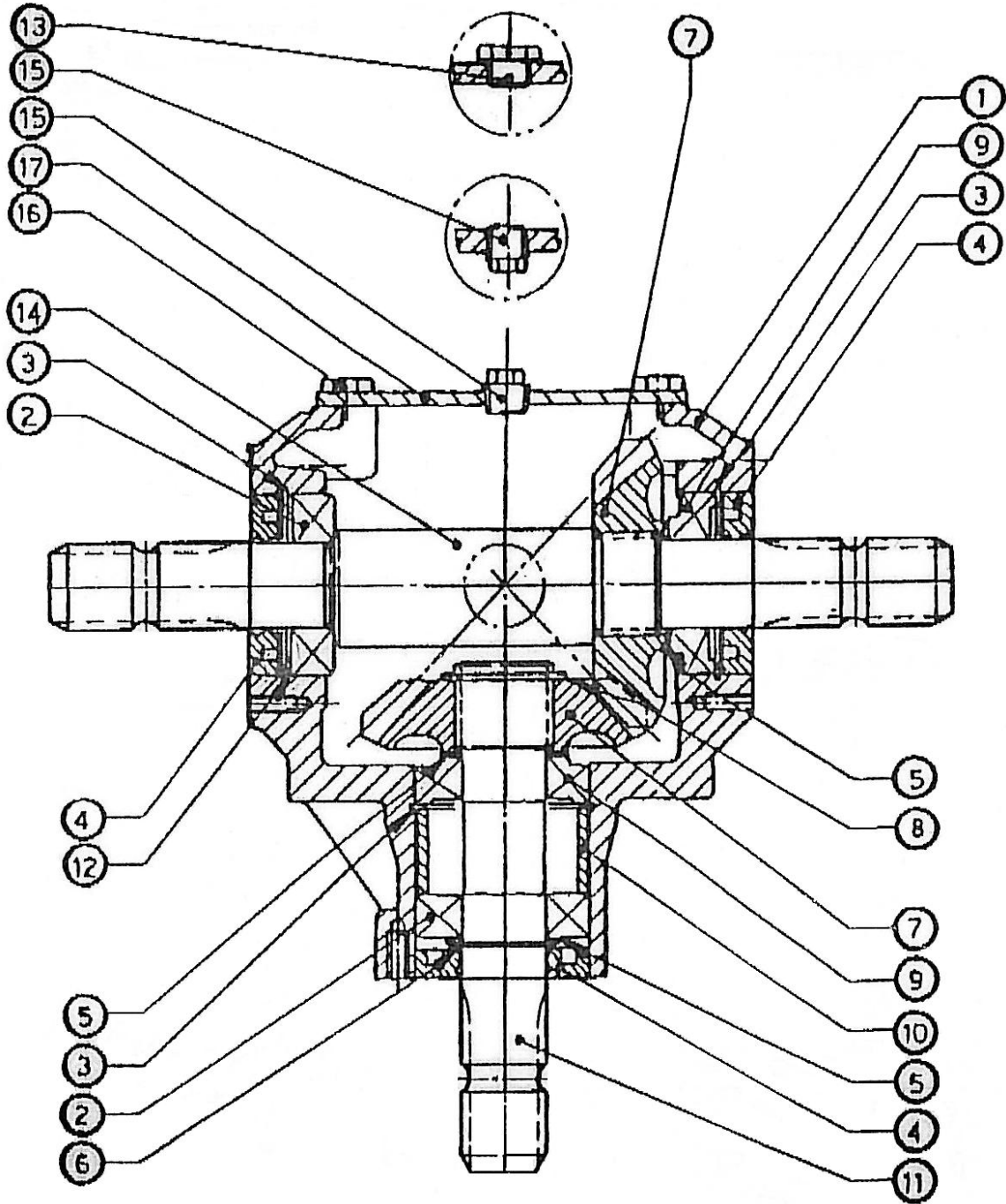
TOP9HDIN GRASS TOPPER ROTOR ASSEMBLY



SEE TABLE NO: 005

TABLE NO: 005 TOP9HDIN GRASS TOPPER ROTOR ASSEMBLY			
ITEM NO	DESCRIPTION	TOP9HDIN	
		CODE	QTY
1	900mm ROTOR BAR	ZGPP64	2
2	ROTOR BAR HOLDER	ZGPP108	2
3	TOPPER BLADE RIGHT HAND	ZGPP07	2
4	TOPPER BLADE LEFT HAND	ZGPP85	2
5	STRAIGHT TOPPER BLADE	ZGPP107	4
6	M24 x 60 BOLT	ZFAS70	4
7	M24 NYLOCK	ZFAS21	4
8	M14 x 50 BOLT	ZFAS41	8
9	M14 NYLOCK	ZFAS42	8
10	TOPPER CASTLE NUT	GBL.0.140.7102.00	2
11	2" x 3/16" COTTER PIN	ZFAS140	2

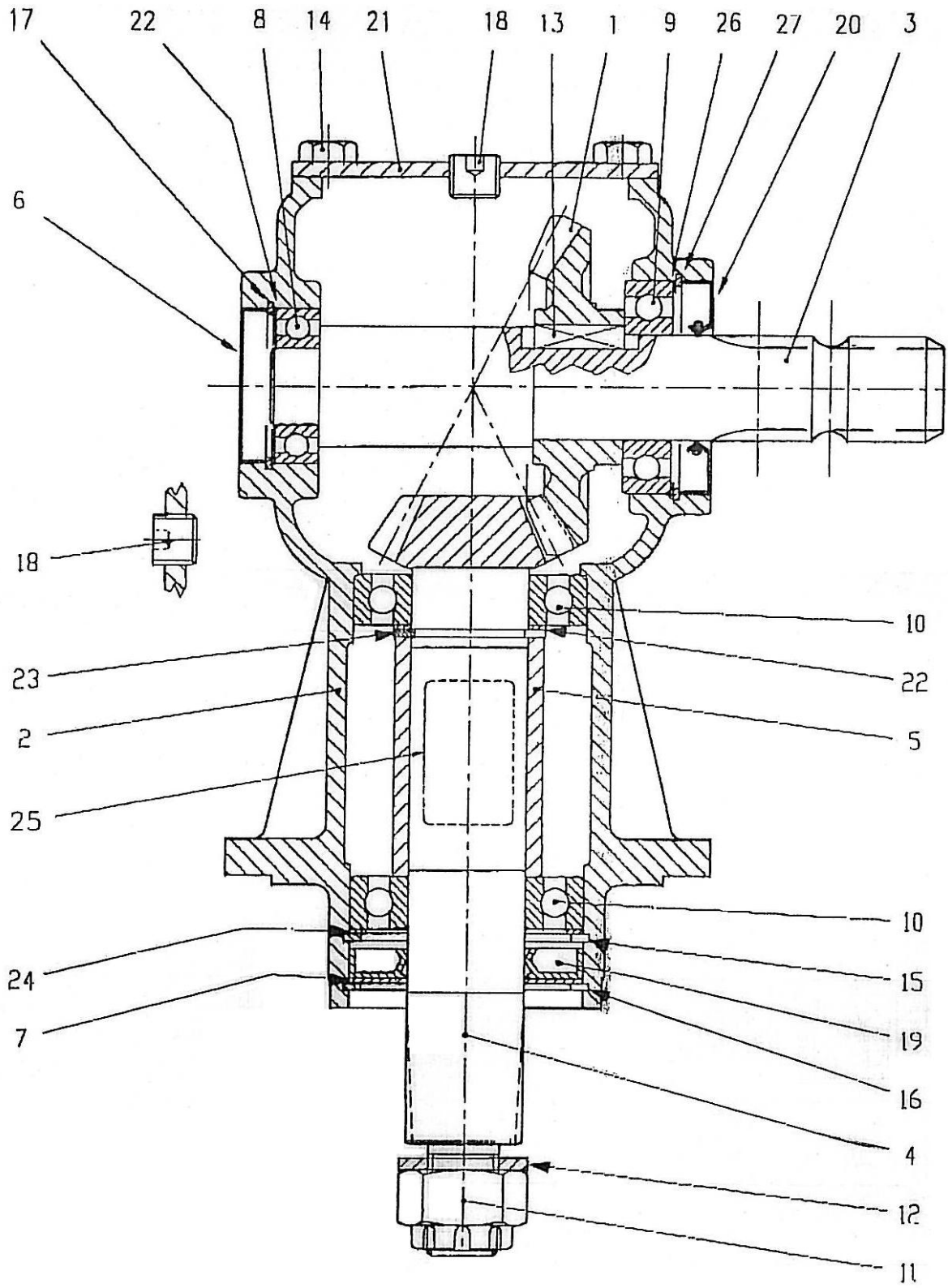
INLINE GRASS TOPPER CENTRE GEARBOX PART No: ZGPP57



SEE TABLE NO: 006

<b>TABLE NO: 006 COMER T GEARBOX T27/A 9.267.806.10</b>			
<b>ZGPP57</b>			
<b>POS.</b>	<b>PART NO.</b>	<b>PCS.</b>	<b>DESCRIPTION:</b>
1	0.267.0300.00	1	CASING
2	8.0.1.00870	2	BEARING
3	8.5.2.00131	3	SNAP RING 72 UNI7437
4	8.7.1.00152	3	DOUBLE LIP SEAL
5	0.259.7500.00	3	SHIM 48.0
6	8.5.1.0005	1	SNAP RING 35 UNI7435
7	0.267.5000.00	2	GEAR Z18 M6.15
8	8.5.1.00029	1	SNAP RING 40 UNI7435
9	8.0.9.00026	2	BALL BEARING
10	0.267.7100.00	1	SPACER
11	0.267.2001.00	1	SHAFT 1 3/8"
12	0.248.7500.00	1	SHIM 71.7
13	0.107.7100.01	1	OIL FILLER PLUG
14	0.267.3005.00	1	SHAFT 1 3/8"
15	8.6.5.0006	2	PLUG 3/8" GAS
16	8.1.1.00054	4	BOLT M10X20 8.8
17	0.267.1302.00	1	COVER

STANDARD DUTY INLINE TOPPER GEARBOX PART No ZGPP56

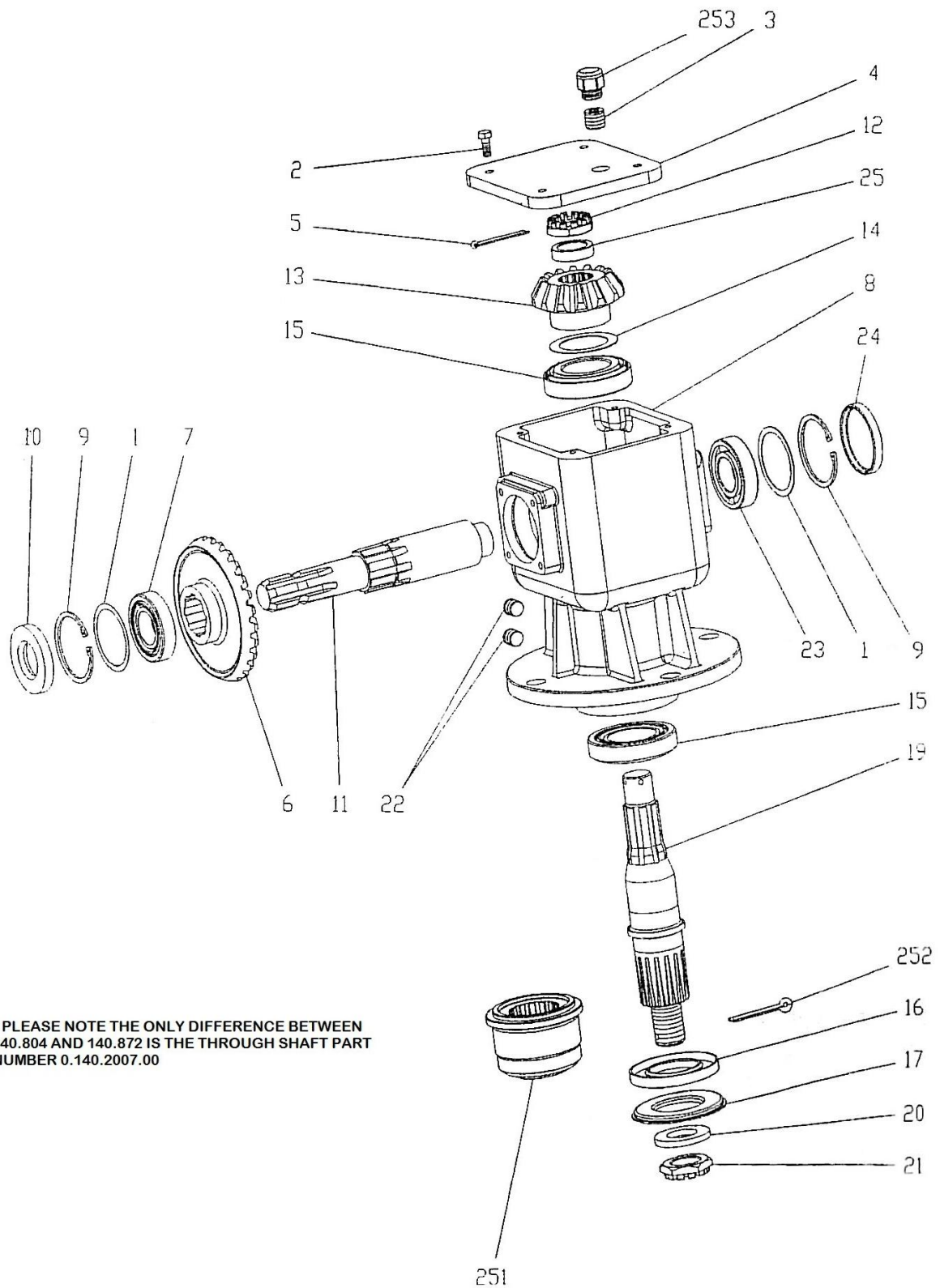


SEE TABLE NO: 007

**TABLE NO: 007 COMER L GEARBOX LF 9.205.805.00****ZGPP56**

<b>POS.</b>	<b>PART NO.</b>	<b>PCS.</b>	<b>DESCRIPTION:</b>
1	0.135.5000.00	1	CROWN GEAR Z23 M5
2	0.205.0300.00	1	CASING
3	0.135.2001.00	1	INPUT SHAFT 1 3/8" Z6
4	0.135.6008.00	1	PINION Z12 M5
5	0.135.7105.00	1	SPACER
6	8.7.0.00693	1	OIL CAP
7	1.135.7100.00	1	PROTECTIVE WASHER
8	8.0.1.00034	1	BALL BEARING
9	8.0.1.00870	1	BALL BEARING
10	8.0.1.00871	2	BALL BEARING
11	8.2.2.00515	1	CASTLE NUT M24X2 PR80B
12	8.3.2.00409	1	BOLT WASHER 25X44X4
13	8.4.1.00993	1	PARALLEL KEY B
14	8.1.1.00054	4	BOLTS M10X20 HHB (8.8)
15	8.5.2.00030	1	SNAP RING (80X83.5X2.5)
16	8.5.3.00955	1	SNAP RING SB 81
17	8.5.2.01358	1	SNAP RING (52X55X2.5)
18	8.6.6.00201	2	3/8" GAS SOLID PLUG
19	8.7.1.00748	1	DUST LIP SEAL
20	8.7.3.00055	1	OIL SEAL
21	0.205.1300.00	1	COVER
22	0.244.7500.00	2	SHIM KIT (40.3X51.5)
23	8.5.1.00680	1	SNAP RING (40X37.5X2.5)
24	0.267.7500.00	1	SHIM KIT (69X79.7)
25	0.124.7135.00	1	NAME PLATE
26	0.248.7500.00	1	SHIM KIT (60.3X71.7)
27	8.5.2.00131	1	SNAP RING (72X75X2.5)

**TOP9HDIN HEAVY DUTY GEARBOXES PART No: ZGPP105 & ZGPP106**



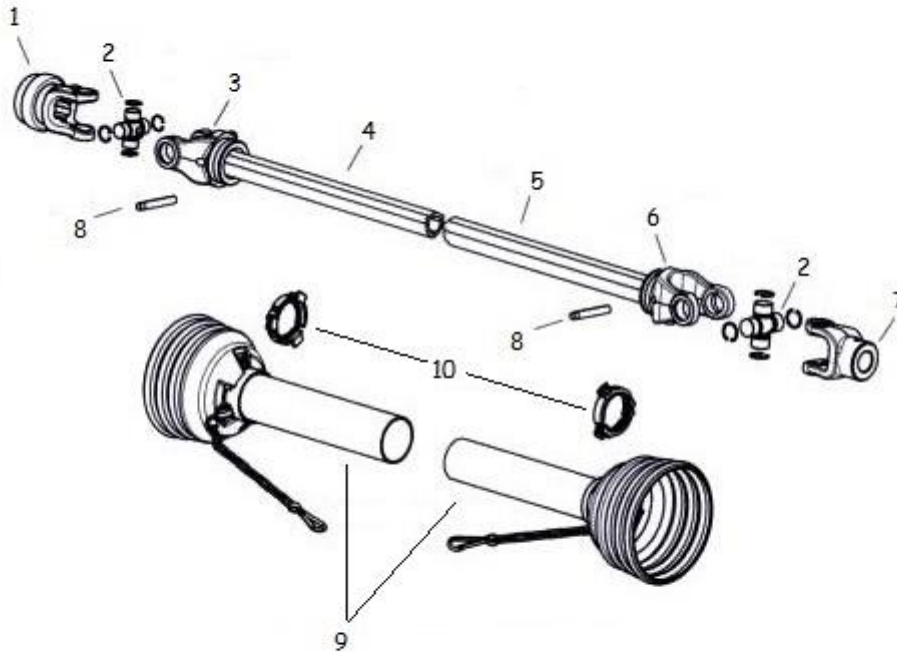
\* PLEASE NOTE THE ONLY DIFFERENCE BETWEEN 140.804 AND 140.872 IS THE THROUGH SHAFT PART NUMBER 0.140.2007.00

SEE TABLE NO: 008



<b>TABLE NO: 008 COMER L/T GEARBOX 9.140.804.20 /9.140.872.20</b>			
<b>ZGPP105 &amp; ZGPP106</b>			
<b>POS.</b>	<b>PART NO.</b>	<b>PCS.</b>	<b>DESCRIPTION:</b>
1	0.248.7500.00		SHIM 71.7
2	8.1.1.00041	4	BOLT
3	8.6.6.00088	1	OIL FILLER PLUG ½"
4	0.140.1302.00	1	COVER
5	8.4.7.01111	3	SPLIT PIN B4X55
6	0.130.5001.00	1	MAIN GEAR Z27 M5.64
7	8.0.9.00026	1	BALL BEARING
8	0.140.0300.00	1	CASING
9	8.5.2.00131	2	CIRCLIP 72 UNI7437
10	8.7.1.00152	1	OIL SEAL
11	0.140.2000.00	1	SHAFT 1 3/8" Z6
12	0.132.7106.00	1	CASTLE NUT M30X1.5
13	0.116.6005.00	1	PINION COG Z14 M5.64
14	0.712.7500.00	1	SHIM 50.3X70.3
15	8.0.9.00469	1	BALL BEARING
16	8.1.1.00054	1	OIL SEAL
17	0.139.7100.00	1	PROTECTION WASHER
18	0.124.7135.00	1	
19	0.140.3002.00	1	PINION SHAFT
20	0.139.7101.00	1	WASHER
21	0.140.7102.00	1	CASTLE NUT
22	8.6.6.00201	2	GAS PLUGS 3/8"
23	8.0.1.00870	1	BALL BEARING
24	8.7.0.00744	1	OIL CAP
25	0.132.7109.00	1	DISTANCE SPACER
	0.140.2007.00	1	STRAIGHT SHAFT FOR T BOX

INLINE TOPPER PTO SHAFT PART No: ZGPP84



SEE TABLE NO: 009

**TABLE NO: 009 INLINE TOPPER OVER RUN PTO SHAFT C/W SHEARBOLT**

**ZGPP84**

POS.	PART NO.	PCS.	DESCRIPTION:
1	P8S-102-6506	1	1 3/8" x 6 SPLINED YOKE
2	P8S-200-6580	2	CROSS & BEARING KIT
3	P8S-300-6545	1	INNER PROFILE YOKE
4	P9T-610-4504-000	1	INNER PROFILE TUBE 3m
5	P8S-610-5203-000	1	OUTER PROFILE TUBE 3m
6	P8S-300-6552	1	OUTER PROFILE YOKE
7	P8S-40-16055	1	OVERRUN/ SHEARBOLT CLUTCH
8	P8S-508-1085	1	M10 x 85mm ROLL PIN
9	P8S-907-3500-111	1	SAFETY COVER
10	P8S-961-3505	1	SAFETY COVER BEARING KIT

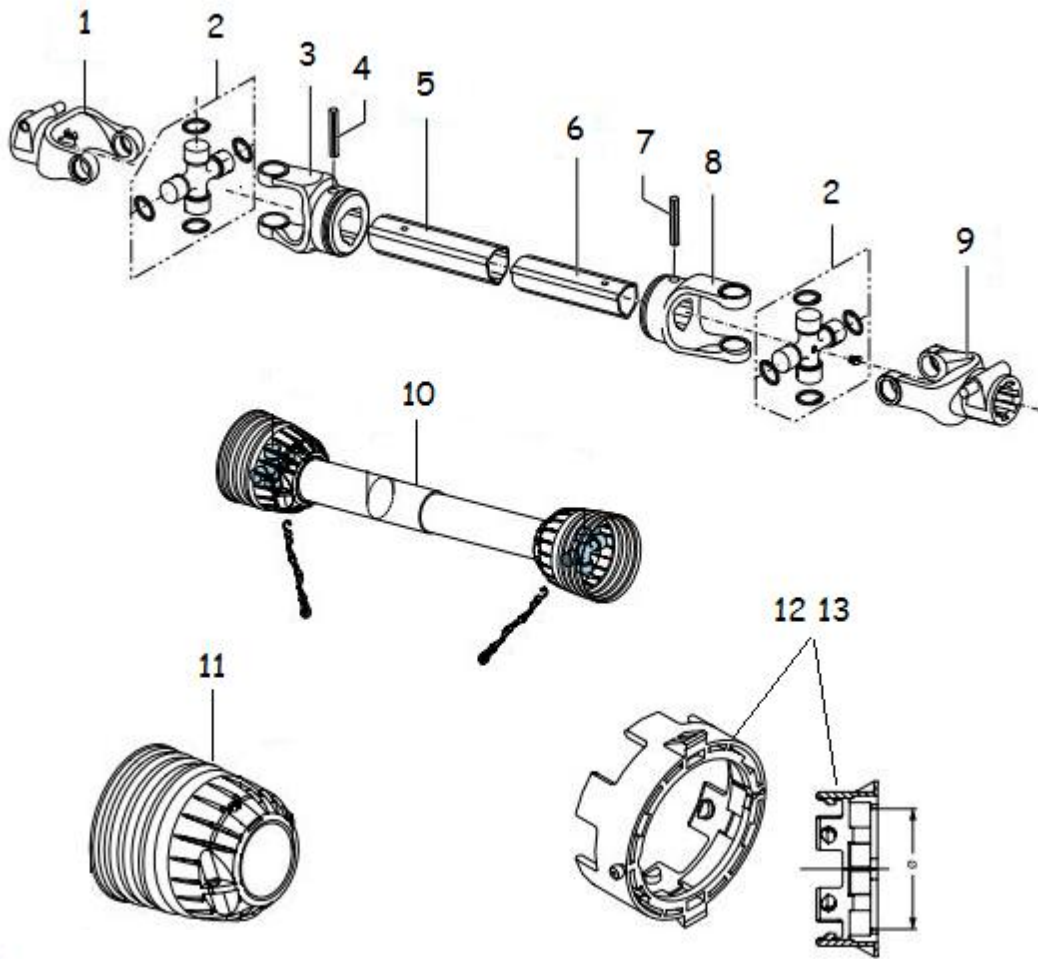
WEASLER OVER RUN CLUTCH PARTS



SEE TABLE NO: 010

<b>TABLE NO 010: TOP9 &amp; TOP9HDIN PTO SHAFT OVER RUN CLUTCH END COMPONENTS</b>			
<b>ZGPP84</b>			
<b>POS.</b>	<b>PART NO.</b>	<b>PCS.</b>	<b>DESCRIPTION:</b>
1	P8S-552-0050537	2	PAWL
2	P8S-552-0050436	2	LEAF SPRING
3	P8S-551-5000005	1	SUPPORT RING
4	P8S-39-36061	1	HUB
5	P8S-572-0000103	3	BALL BEARING
6	P8S-552-0000508	1	D72 SNAP RING
7	P8S-552-0000510	1	BACK UP RING
8	P8S-572-0000104	1	SPRING
9	P8S-572-1000102	1	COLLAR
10	P8S-572-0000514	1	BACK UP RING
11	P8S-572-0000515	1	D46 SNAP RING

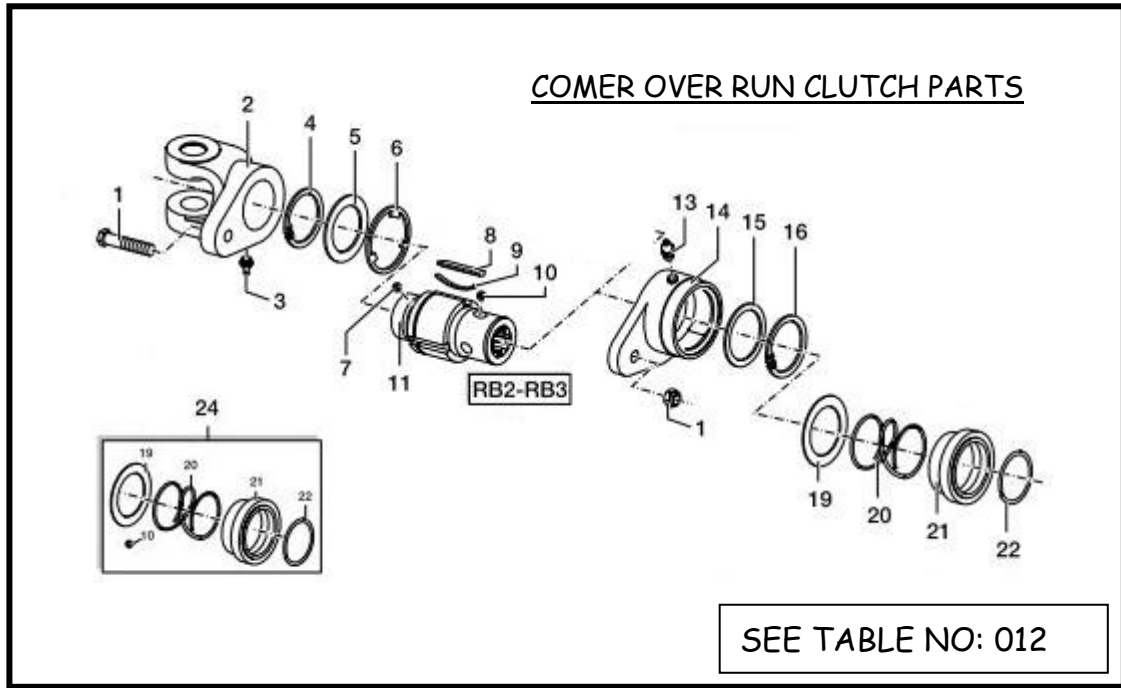
INLINE TOPPER PTO SHAFT PART No: ZGPP84



SEE TABLE NO: 011

**TABLE NO 011: INLINE TOPPER OVER RUN PTO SHAFT C/W SHEARBOLT**

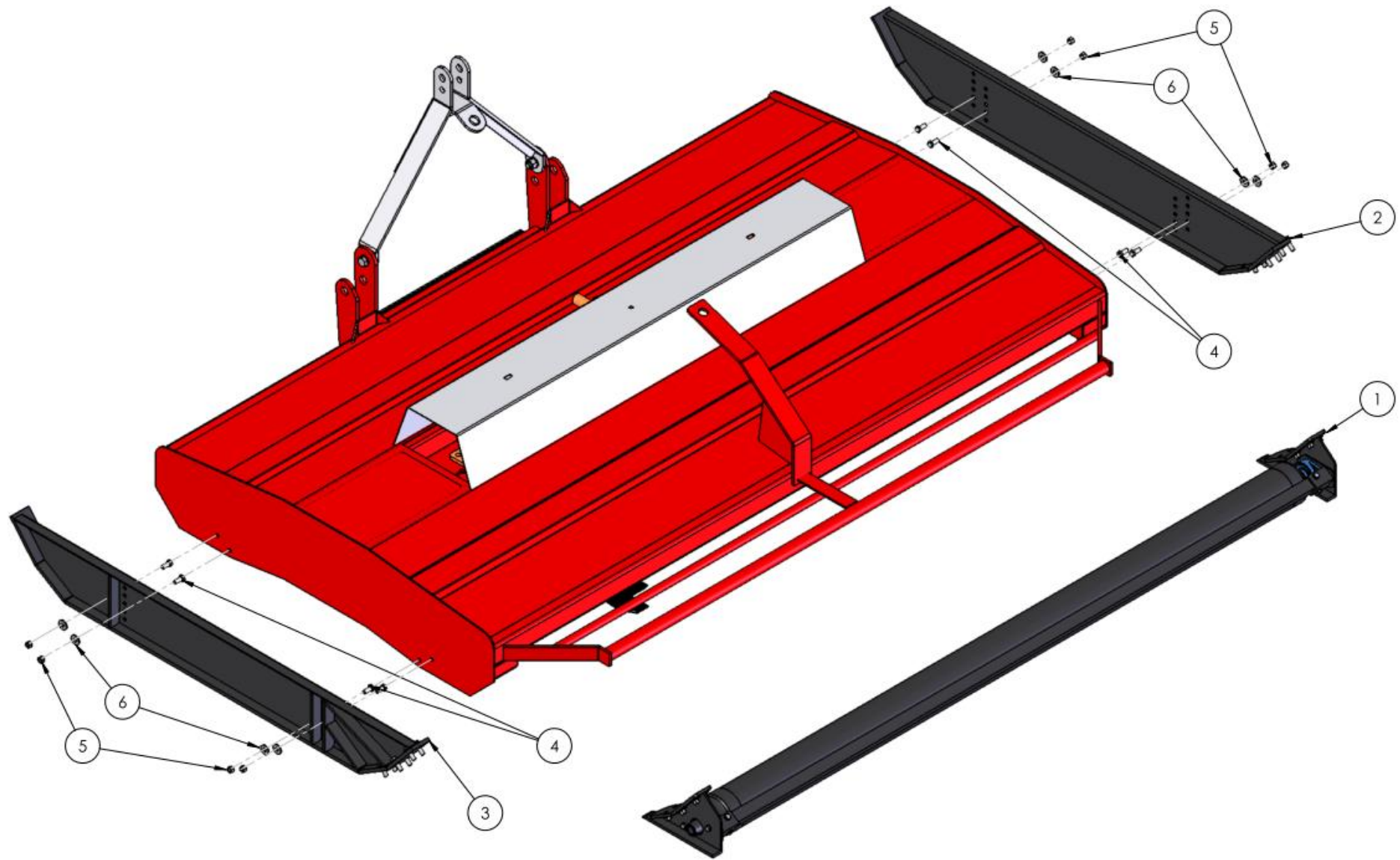
<b>ZGPP84</b>			
<b>POS.</b>	<b>PART NO.</b>	<b>PCS.</b>	<b>DESCRIPTION:</b>
1	P8C-141-025-363	2	1 3/8" x 6 SPLINED YOKE
2	P8C-180-015-130	2	CROSS & BEARING KIT
3	P8C-151-015-011	1	OUTER PROFILE YOKE
4	P8C-190-000-016	1	M10 x 70mm ROLL PIN
5	P9T-610-4504-000	1	INNER PROFILE TUBE 3m
6	P8S-610-5203-000	1	OUTER PROFILE TUBE 3m
7	P8C-190-000-394	1	M10 x 65mm ROLL PIN
8	P8C-151-015-012	1	INNER PROFILE YOKE
9	P8C-143-350-001	1	SHEARBOLT / OR YOKE
10	P8C-142-350-015-9550	1	SAFETY COVER
11	P8C-180-036-633	1	SAFETY COVER CONE
12	P8C-180-015-391	1	(a=62.5mm) COVER BEARING
13	P8C-180-015-390	1	(a=54.5mm) COVER BEARING



**TABLE NO 012: INLINE TOPPER OVER RUN CLUTCH END COMPONENTS**

<b>ZGPP84</b>			
<b>POS.</b>	<b>PART NO.</b>	<b>PCS.</b>	<b>DESCRIPTION:</b>
1	ZFAS54	1	M8x50 10.9 SHEARBOLT
1	ZFAS14	1	M10x50 8.8 SHEARBOLT
2	P8C-151-015-342	1	50 SERIES YOKE
3	P8C-190-000-020	1	M8x1 GREASE NIPPLE
4	P8C-190-000-178	1	CIRCLIP
5	P8C-190-000-435	1	RETAINING WASHER RING
6	P8C-180-014-393	1	GASKET
7	P8C-190-000-022	25	BALL BEARING
8	P8C-180-014-137	3	LEAF SPRING
9	P8C-151-014-136	3	RATCHET
10	P8C-190-000-078	3	BALL BEARING
11	P8C-151-014-432	1	6 SPLINE HUB
13	P8C-190-000-020	1	M8x1 GREASE NIPPLE
14	P8C-151-014-390	1	TORQUE LIMITER SUPPORT
15	P8C-180-014-135	1	RETAINING WASHER RING
16	P8C-190-000-183	1	CIRCLIP
19	P8C-180-015-143	1	SPRING PUSH RING
20	P8C-180-016-487	1	COLLAR SPRING
21	P8C-151-016-486	1	SLIDING SLEEVE COLLAR
22	P8C-190-000-451	1	SNAP RING
24	P8C-165-000-653	1	COLLAR COMPLETE KIT
25	P8C-165-000-726	1	OVER RUN INTERNAL KIT

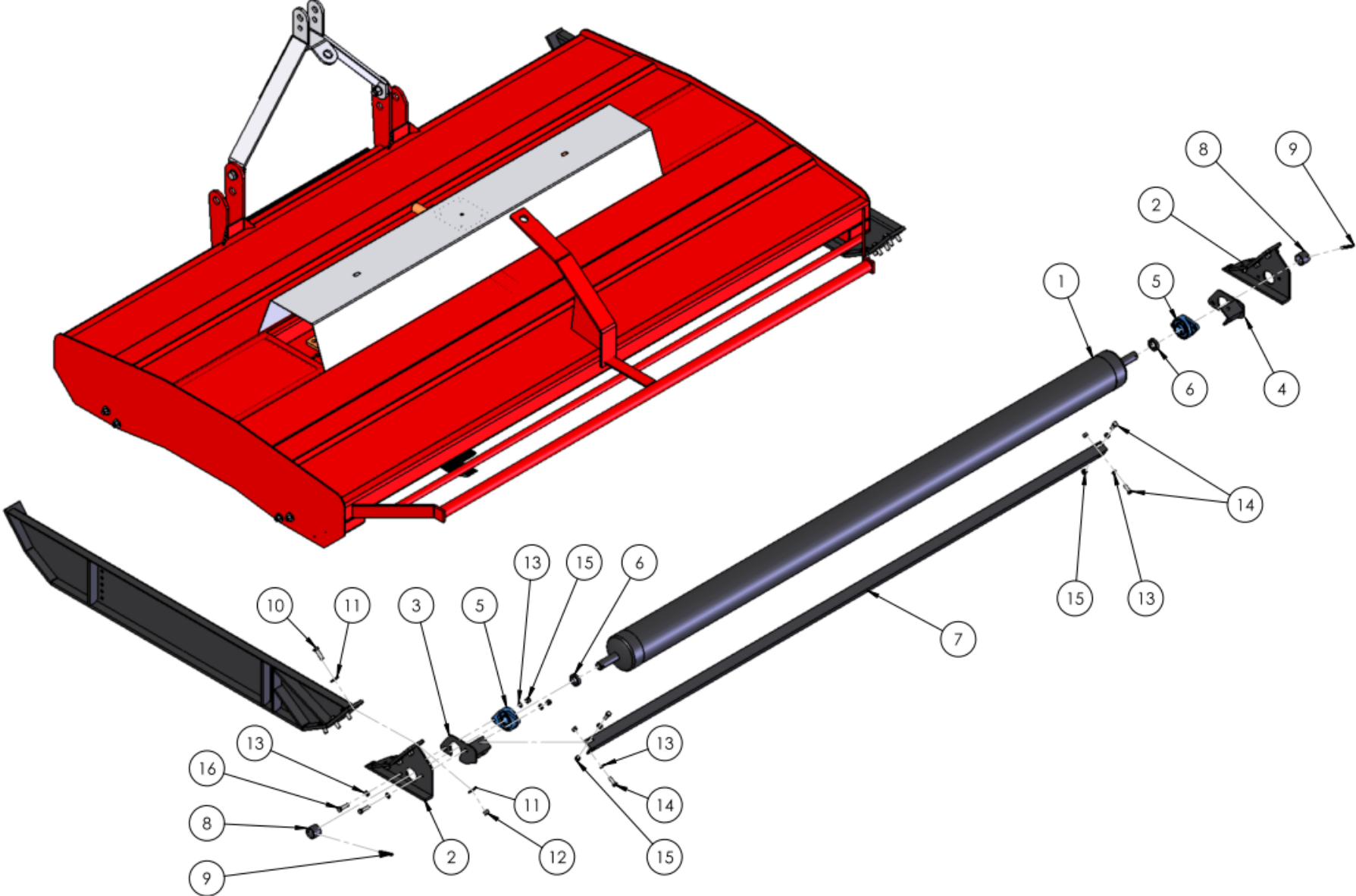
TOP9 & TOP9HDIN ROLLER MAIN ASSEMBLY



SEE TABLE NO: 013

<b>TABLE NO: 013 TOP9 &amp; TOP9HDIN GRASS TOPPER ROLLER MAIN ASSEMBLY</b>			
<b>ITEM NO</b>	<b>DESCRIPTION</b>	<b>TOP9HDIN</b>	
		<b>CODE</b>	<b>QTY</b>
1	ROLLER ASSEMBLY COMPLETE	TOP9ZFR	1
2	LEFT HAND TOPPER SKID	TOP9ZFSL	1
3	RIGHT HAND TOPPER SKID	TOP9ZFSR	1
4	M12x30 SETSCREW ZP	ZFAS10	8
5	M12 NYLOCK NUT	ZFAS22	8
6	M12 WASHER ZP	ZFAS45	8

TOP9 & TOP9HDIN ROLLER ASSEMBLY



SEE TABLE NO: 014



TABLE NO: 014 TOP9 & TOP9HDIN ROLLER ASSEMBLY			
ITEM NO	DESCRIPTION	9FT HD GRASS TOPPER	
		CODE	QTY
1	ROLLER	P100.072	1
2	ROLLER SUPPORT BRACKET	P100.073	2
3	RIGHT HAND BEARING SUPPORT	P100.074	1
4	LEFT HAND BEARING SUPPORT	P100.075	1
5	BEARING	ZDRI25	2
6	SPACER	P100.076	2
7	SCRAPER	P100.077	1
8	RETAINING CAP	P100.078	2
9	M8x70 ROLL PIN	ZFAS29	2
10	M12x40 SETSCREW ZP	ZFAS51	12
11	M12 WASHER ZP	ZFAS45	24
12	M12 NYLOCK NUT	ZFAS22	12
13	M10 WASHER ZP	ZFAS03	16
14	M10x30 SETSCREW ZP	ZFAS07	4
15	M10 NYLOCK NUT	ZFAS20	8
16	M10x40 SETSCREW ZP	ZFAS105	4