

7ft & 8ft SUPERFLOAT TOPPER SPARE PARTS LIST



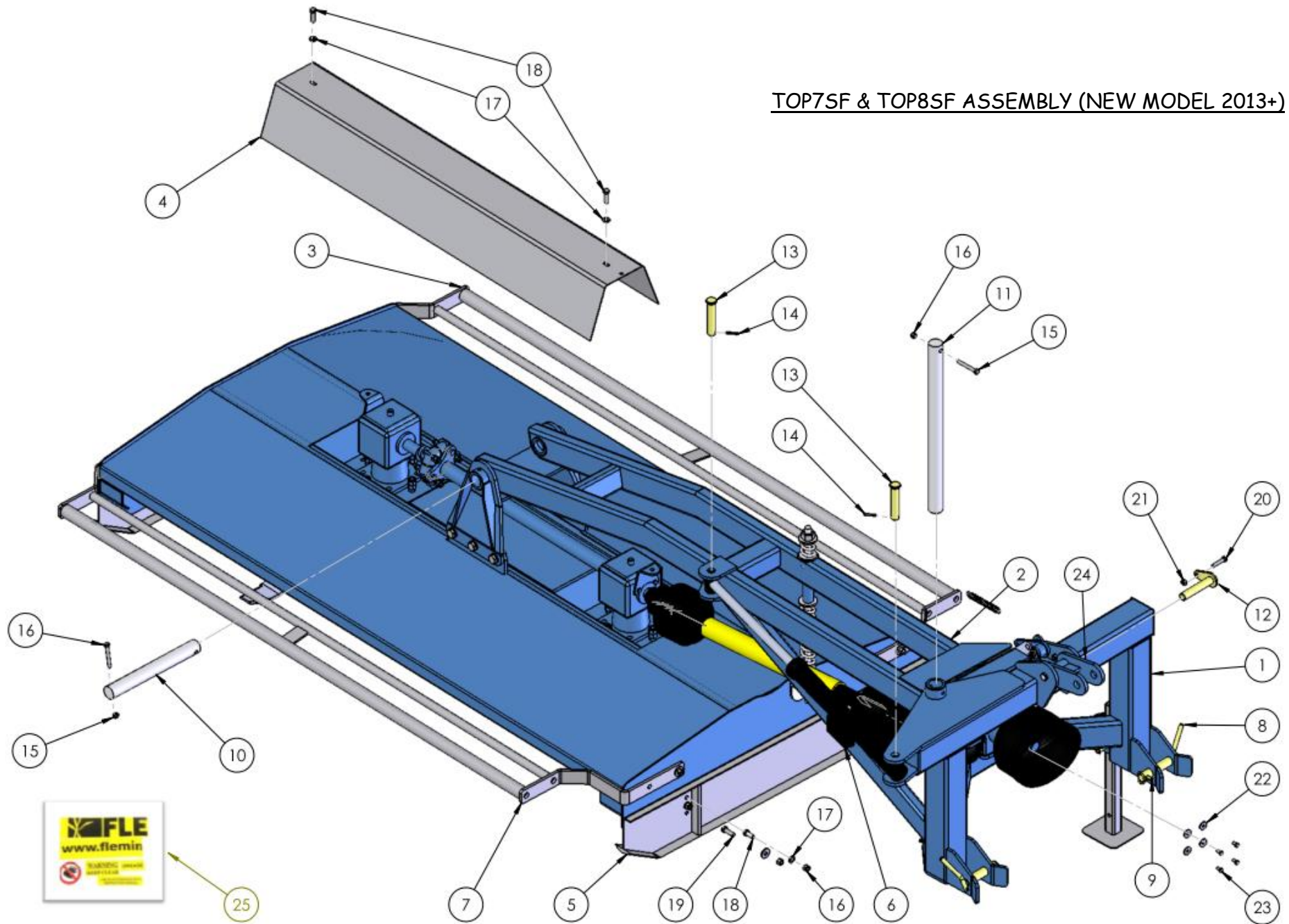
Table of Contents:

TOP7SF, TOP8SF and TOP8SFHD SPARE PARTS LIST

- Table 001: TOP7SF, TOP8SF and TOP8SFHD TOPPER ASSEMBLY (2013+)
- Table 002: TOP7SF, TOP8SF and TOP8SFHD A-FRAME ASSEMBLY (2013+)
- Table 003: TOP7SF, TOP8SF and TOP8SFHD FLOTATION SPRING LAYOUT (2013+)
- Table 004: TOP7SF, TOP8SF and TOP8SFHD TOPPER ASSEMBLY (2006-2013)
- Table 005: TOP7SF and TOP8SF TOPPER DRIVELINE ALL VERSIONS
- Table 006: TOP8SFHD TOPPER DRIVELINE ALL VERSIONS
- Table 007: TOP7SF and TOP8SF ROTOR ASSEMBLY
- Table 008: TOP8SFHD ROTOR ASSEMBLY
- Table 009: TOP7SF, TOP8SF and TOP8SFHD HYDRAULIC SYSTEM
- Table 010: A FRAME GEARBOX PART No. ZGPP57 ALL VERSIONS
- Table 011: TOP7SF and TOP8SF OUTER GEARBOX PART No. ZGPP56
- Table 012: TOP7SF and TOP8SF CENTRE GEARBOX PART No. ZGPP55
- Table 013: TOP8SFHD GEARBOXES PART No. ZGPP105
- Table 014: PTO SHAFT PART No: ZGPP114 (WEASLER)
- Table 015: PTO SHAFT PART No: ZGPP91 (WEASLER)
- Table 016: WEASLER OVER RUN CLUTCH COMPONENTS
- Table 017: PTO SHAFT PART No: ZGPP114 (COMER)
- Table 018: PTO SHAFT PART No: ZGPP91 (COMER)
- Table 019: COMER OVER RUN CLUTCH COMPONENTS

A parts diagram for the old model Side Mounted Topper (TOP7SM & TOP8SM Pre 2006) is included at the back of this parts list.

TOP7SF & TOP8SF ASSEMBLY (NEW MODEL 2013+)

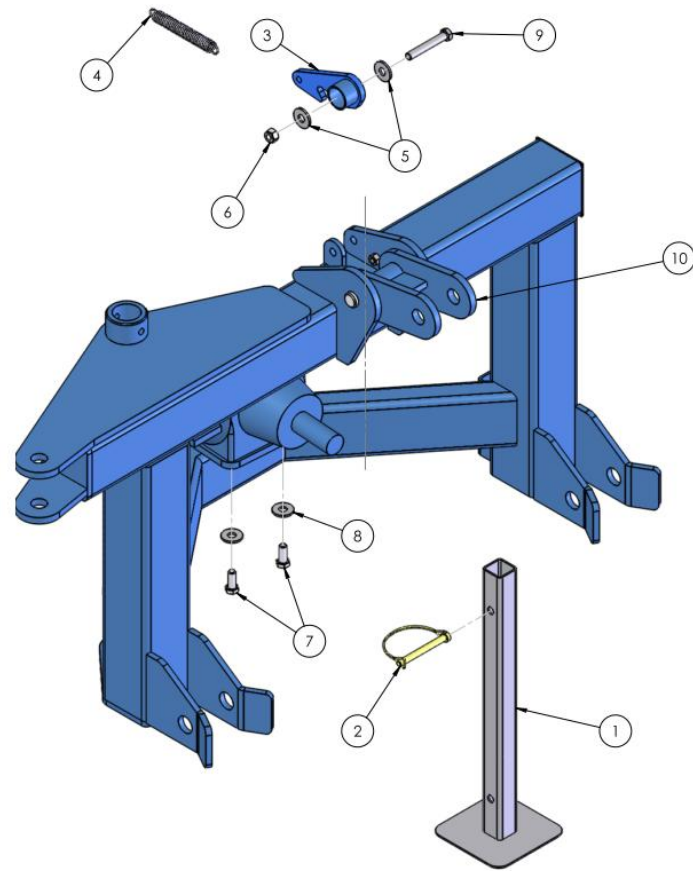


SEE TABLE NO: 001

TABLE NO: 001 TOP7SF & TOP8SF TOPPER MAIN ASSEMBLY (NEW MODEL 2013+)

ITEM NO	DESCRIPTION	7FT SUPERFLOAT TOPPER		8FT SUPERFLOAT TOPPER	
		CODE	QTY	CODE	QTY
1	HEADSTOCK	P001.025	1	P001.025	1
2	LINKAGE BEAM	P001.026	1	P001.027	1
3	REAR SAFETY GUARD	P001.028		P001.029	
4	GEARBOX COVER	P001.030	1	P001.031	1
4	TOP8SFHD GEARBOX COVER			P001.071	1
5	GRASS TOPPER SKID	P001.032	2	P001.032	2
6	HYDRAULIC CYCLINDER	ZHYD01	1	ZHYD01	1
7	FRONT SAFETY GUARD	P001.033	2	P001.034	2
8	CAT 2 LIFT ARM PIN	ZGPP62	2	ZGPP62	2
9	M10x40 LINCH PIN	ZFAS31	2	ZFAS31	2
10	PIVOT PIN	P001.035	1	P001.035	1
11	HEADSTOCK PIVOT PIN	P001.036	1	P001.036	1
12	LOCKING PIN	ZMAC83	1	ZMAC83	1
13	RAM PIN (25 DIA x 130mm)	ZGPP95	2	ZGPP95	2
14	M6 x 40 ROLL PIN 1215	ZFAS30	3	ZFAS30	3
15	M12 x 80 BOLT	ZFAS47	2	ZFAS47	2
16	M12 NYLOCK	ZFAS22	18	ZFAS22	18
17	12mm WASHER	ZFAS45	18	ZFAS45	18
18	M12 X 30 BOLT	ZFAS10	10	ZFAS10	10
19	M12 x 40 SET SCREW	ZFAS51	8	ZFAS51	8
20	M10x30 SETSCREW ZP	ZFAS07	1	ZFAS07	1
21	M10 NYLOCK	ZFAS20	1	ZFAS20	1
22	M8 Washer	ZFAS61	8	ZFAS61	8
23	M8 x 16 BOLT	ZFAS08	8	ZFAS08	8
24	FLOATING TOP LINK	P001.037	1	P001.037	1
25	STICKER KIT	P001.537	1	P001.537	1

TOP7SF & TOP8SF HEADSTOCK (NEW MODEL 2013+)

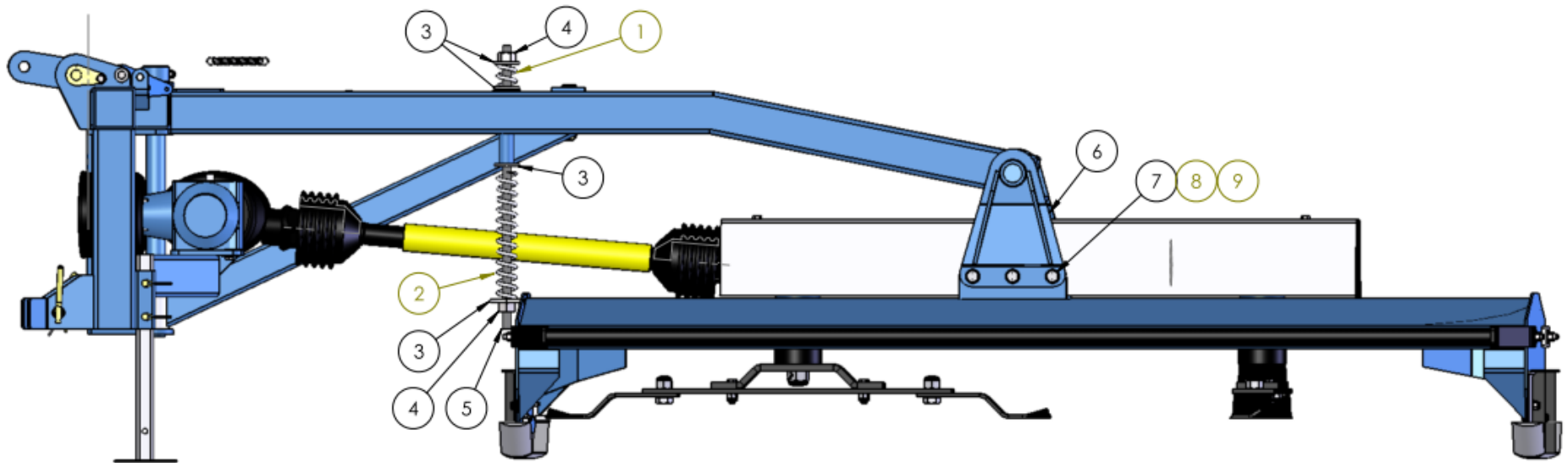


SEE TABLE NO: 002

TABLE NO: 002 TOP7SF & TOP8SF TOPPER HEADSTOCK ASSEMBLY (NEW MODEL 2013+)

ITEM NO	DESCRIPTION	7FT SUPERFLOAT TOPPER		8FT SUPERFLOAT TOPPER	
		CODE	QTY	CODE	QTY
1	STAND	P001.038	1	P001.038	1
2	PIPE LINCH PIN	ZGPP94	1	ZGPP94	1
3	LATCH	ZPPA174A	1	ZPPA174A	1
4	LATCH SPRING (OPTIONAL)	ZSPR01	1	ZSPR01	1
5	12mm WASHER	ZFAS45	2	ZFAS45	2
6	M12 NYLOCK	ZFAS22	1	ZFAS22	1
7	M12 X 30 BOLT	ZFAS10	4	ZFAS10	4
8	M12 SPRING WASHER	ZFAS76	4	ZFAS76	4
9	M12 X80 HIGH TENSILE BOLT	ZFAS47	1	ZFAS47	1
10	FLOATING TOP LINK	P001.037	1	P001.037	1

TOP7SF & TOP8SF SPRING LAYOUT (NEW MODEL 2013+)

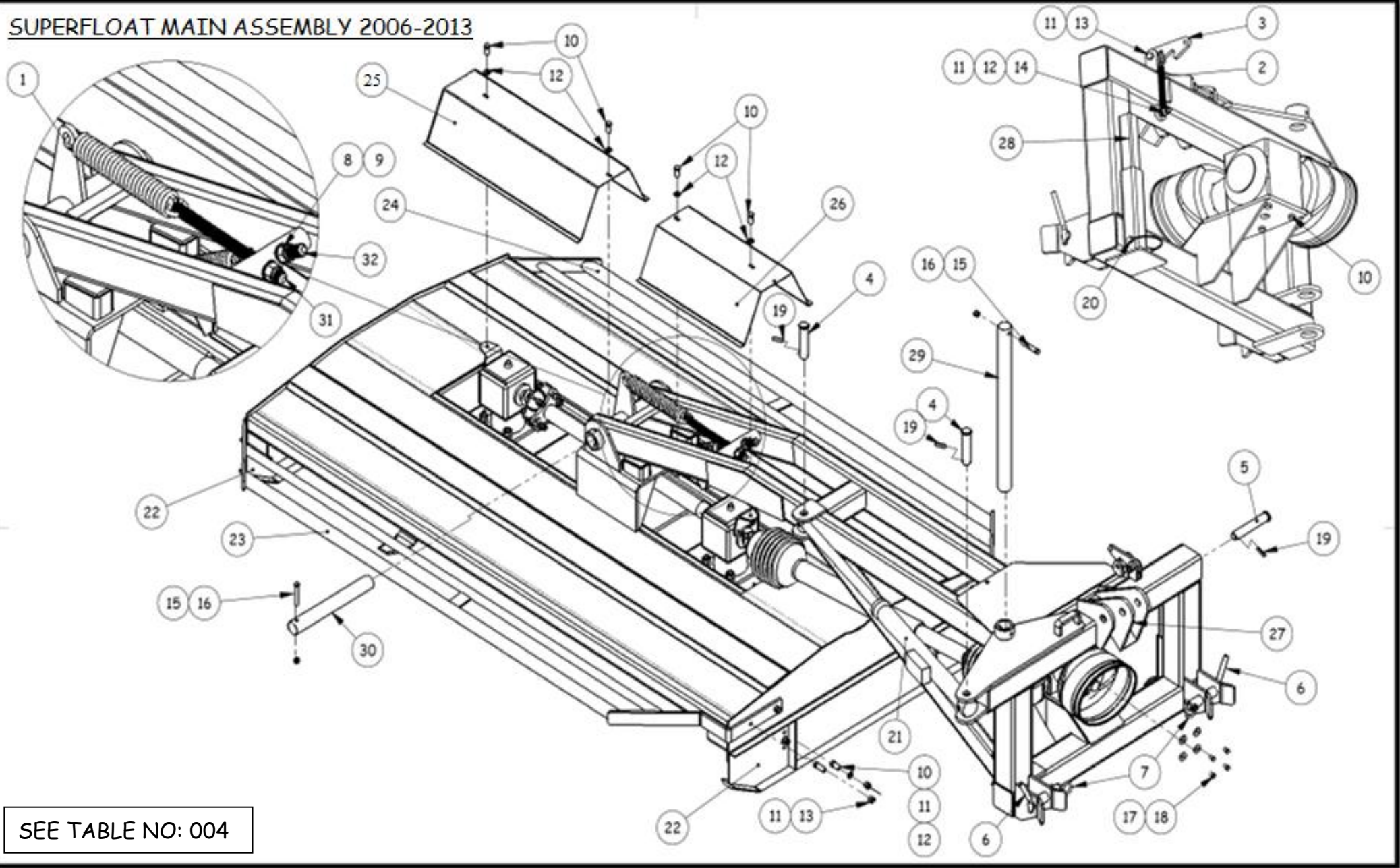


SEE TABLE NO: 003

TABLE NO: 003 TOP7SF & TOP8SF TOPPER SPRING ASSEMBLY (NEW MODEL 2013+)

ITEM NO	DESCRIPTION	7FT SUPERFLOAT TOPPER		8FT SUPERFLOAT TOPPER	
		CODE	QTY	CODE	QTY
1	COMPRESSION SPRING SMALL	ZSPR12A	1	ZSPR12A	1
2	COMPRESSION SPRING LARGE	ZSPR12	1	ZSPR12	1
3	WASHER	ZPPA706	4	ZPPA706	4
4	M20 NYLOCK NUT	ZFAS24	2	ZFAS24	2
5	TENSIONER ROD	P001.039	1	P001.039	1
6	LINKAGE BRACKET	ZPPA705A	2	ZPPA705A	2
7	M16x45 SETSCREW	ZFAS11	6	ZFAS11	6
8	M16 WASHER ZP	ZFAS36	12	ZFAS36	12
9	M16 NYLOCK NUT	ZFAS23	6	ZFAS23	6

SUPERFLOAT MAIN ASSEMBLY 2006-2013



SEE TABLE NO: 004

TABLE NO: 004 SUPERFLOAT TOPPER MAIN ASSEMBLY (2006-2013)

ITEM NO	DESCRIPTION	TOP7SF		TOP8SF	
		CODE	QTY	CODE	QTY
1	SUPERFLOAT DECK SPRING	ZSPR08	2	ZSPR08	2
2	SUPERFLOAT LATCH SPRING	ZSPR01	1	ZSPR01	1
3	SAFETY LATCH	ZPPA174	1	ZPPA174	1
4	RAM PIN (25 DIA x 130mm)	ZGPP95	2	ZGPP95	2
5	RAM PIN (25 DIA x 170mm)	ZGPP96	1	ZGPP96	1
6	HEAVY DUTY LIFT ARM PIN	ZGPP62	2	ZGPP62	2
7	PIPE LINCH PIN	ZGPP94	1	ZGPP94	1
8	M20 NYLOCK	ZFAS24	2	ZFAS24	2
9	M20 WASHER	ZFAS39	2	ZFAS39	2
10	M12 X 30 BOLT	ZFAS10	16	ZFAS10	16
11	M12 NYLOCK	ZFAS22	18	ZFAS22	18
12	12mm WASHER	ZFAS45	14	ZFAS45	14
13	M12 x 40 SET SCREW	ZFAS51	9	ZFAS51	9
14	M12 x 50 BOLT	ZFAS15	1	ZFAS15	1
15	M10 x 80 BOLT	ZFAS40	2	ZFAS40	2
16	M10 NYLOCK	ZFAS20	2	ZFAS20	2
17	M8 x 16 BOLT	ZFAS08	8	ZFAS08	8
18	M8 Washer	ZFAS61	8	ZFAS61	8
19	M6 x 40 ROLL PIN 1215	ZFAS30	3	ZFAS30	3
20	PIPE LINCH PIN	ZGPP94	1	ZGPP94	1
21	SUPERFLOAT BRAKEAWAY RAM	ZHYD01	1	ZHYD01	1
22	SUPERFLOAT TOPPER SKIDS	P001.032	2	P001.032	2
23	SUPERFLOAT TOPPER DECK GUARD (FRONT)	P001.040	1	P001.041	1
24	SUPERFLOAT TOPPER DECK GUARD (REAR)	P001.042	1	P001.043	1
25	SUPERFLOAT TOPPER GEARBOX GUARD (LONG)	P001.044	1	P001.045	1
25	TOP8SFHD GEARBOX GUARD (LONG)			P001.069	1
26	SUPERFLOAT TOPPER GEARBOX GUARD (SHORT)	P001.046	1	P001.047	1
26	TOP8SFHD GEARBOX GUARD (SHORT))			P001.070	1
27	SWIVEL HEAD	P001.048	1	P001.048	1
28	TOPPER STAND	P001.049	1	P001.049	1
29	LONG HINGE PIN	P001.050	1	P001.050	1
30	SHORT HINGE PIN	P001.051	1	P001.051	1
31	SPRING TENSIONER LONG	P001.052	1	P001.052	1
32	SPRING TENSIONER SHORT	P001.053	1	P001.053	1

TABLE NO: 005 STANDARD SUPERFLOAT TOPPER DRIVE SYSTEM

ITEM NO	DESCRIPTION	7FT SUPERFLOAT TOPPER		8FT SUPERFLOAT TOPPER	
		CODE	QTY	CODE	QTY
1	T5 PTO SHAFT WITH CLUTCH (ATTACHES TO TRACTOR)	ZGPP91	1	ZGPP91	1
2	(7ft) PTO SHAFT WITH SHEARBOLT (BETWEEN GEARBOXES)	ZGPP142	1		
2	(8ft) PTO SHAFT WITH SHEARBOLT (BETWEEN GEARBOXES)			ZGPP114	1
3	OVER GEARBOX COVER	ZGPP86	2	ZGPP86	2
4	HEAVY DUTY CORNER "L" GEARBOX	ZGPP58	1	ZGPP58	1
5	ROTOR "T" GEARBOX	ZGPP55	1	ZGPP55	1
6	ROTOR "L" GEARBOX	ZGPP56	1	ZGPP56	1
7	TOPPER DRIVE SHAFT (7ft)	ZGPP132	1		
7	TOPPER DRIVE SHAFT (8ft)			ZGPP117	1
8	RUBBER COUPLING	ZGPP82	1	ZGPP82	1
9	GEARBOX TO RUBBER COUPLING CONNECTOR	ZGPP116	1	ZGPP116	1
10	M12 X80 HIGH TENSILE BOLT	ZFAS47	6	ZFAS47	6
11	M12 NYLOCK	ZFAS22	6	ZFAS22	6
12	GEARBOX BREATHER PLUG	ZGPP24	3	ZGPP24	3
13	GEARBOX COVER BRACKET WITH WELDED M12 NUT	ZPPA57A	2	ZPPA57A	2
14	M16 x 55 BOLT	ZFAS62	8	ZFAS62	8
15	M16 PLAIN NUT	ZFAS63	8	ZFAS63	8
16	M16 NYLOCK	ZFAS23	8	ZFAS23	8
17	M8 X 16 BOLT	ZFAS08	4	ZFAS08	4
18	M8 SPRING WASHER	ZFAS72	4	ZFAS72	4

TABLE NO: 006 TOP8SFHD HEAVY DUTY TOPPER DRIVETRAIN

ITEM NO	DESCRIPTION	TOP8SFHD	
		CODE	QTY
1	T5 PTO SHAFT WITH CLUTCH (ATTACHES TO TRACTOR)	ZGPP91	1
2	(8ft) PTO SHAFT WITH SHEARBOLT (BETWEEN GEARBOXES)	ZGPP114	1
3	OVER GEARBOX COVER	ZGPP86	2
4	HEAVY DUTY CORNER "L" GEARBOX	ZGPP58	1
5	CORNER HEAVY DUTY "T" GEARBOX	ZGPP106	1
6	CORNER HEAVY DUTY "L" GEARBOX	ZGPP105	1
7	TOPPER DRIVE SHAFT (TOP8SFHD)	ZGPP117A	1
8	RUBBER COUPLING	ZGPP82	1
9	GEARBOX TO RUBBER COUPLING CONNECTOR	ZGPP116	1
10	M12 X80 HIGH TENSILE BOLT	ZFAS47	6
11	M12 NYLOCK	ZFAS22	6
12	GEARBOX BREATHER PLUG	ZGPP24	3
13	GEARBOX COVER BRACKET WITH WELDED M12 NUT	N/A	
14	M20x70 BOLT	ZFAS108	8
15	M20 PLAIN NUT	ZFAS74	8
16	M20 NYLOCK	ZFAS24	8
17	M8 X 16 BOLT	ZFAS08	4
18	M8 SPRING WASHER	ZFAS72	4

TOP7SF & TOP8SF ROTOR ASSEMBLY

SEE TABLE NO: 007

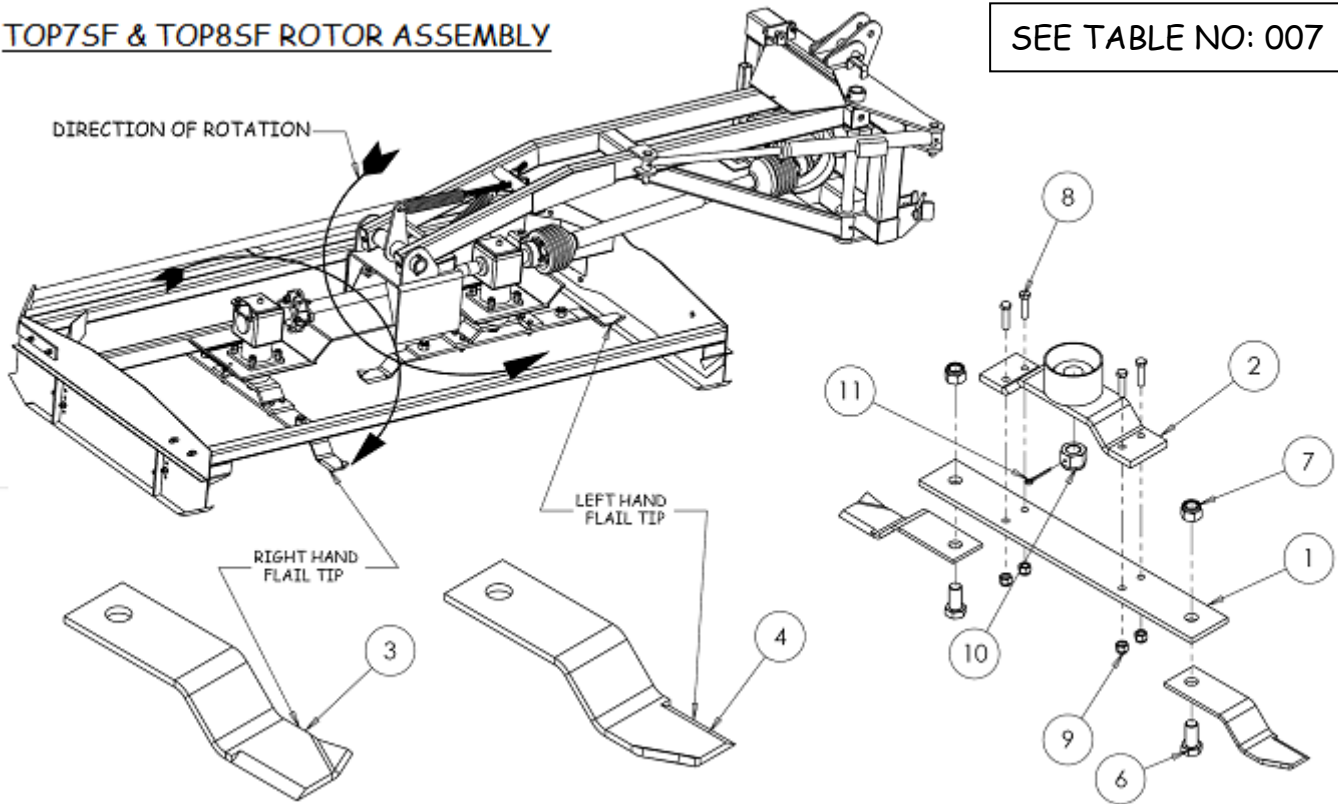


TABLE NO: 007 TOP7SF & TOP8SF ROTOR ASSEMBLY

ITEM NO	DESCRIPTION	7FT SUPERFLOAT TOPPER		8FT SUPERFLOAT TOPPER	
		CODE	QTY	CODE	QTY
1	650mm ROTOR BAR	ZGPP74	2		
1	750mm ROTOR BAR			ZGPP89	2
2	ROTAR BAR HOLDER	ZGPP65B	2	ZGPP65B	2
3	TOPPER BLADE RIGHT HAND	ZGPP07	2	ZGPP07	2
4	TOPPER BLADE LEFT HAND	ZGPP85	2	ZGPP85	2
6	M24 x 50 BOLT	ZFAS09	4	ZFAS09	4
7	M24 NYLOCK	ZFAS21	4	ZFAS21	4
8	M14 x 50 BOLT	ZFAS41	8	ZFAS41	8
9	M14 NYLOCK NUT	ZFAS42	8	ZFAS42	8
10	TOPPER CASTLE NUT	8.2.2.00515	2	8.2.2.00515	2
11	2" x 3/16" COTTER PIN	ZFAS58	2	ZFAS58	2

TOP8SFHD ROTOR ASSEMBLY

SEE TABLE NO: 008

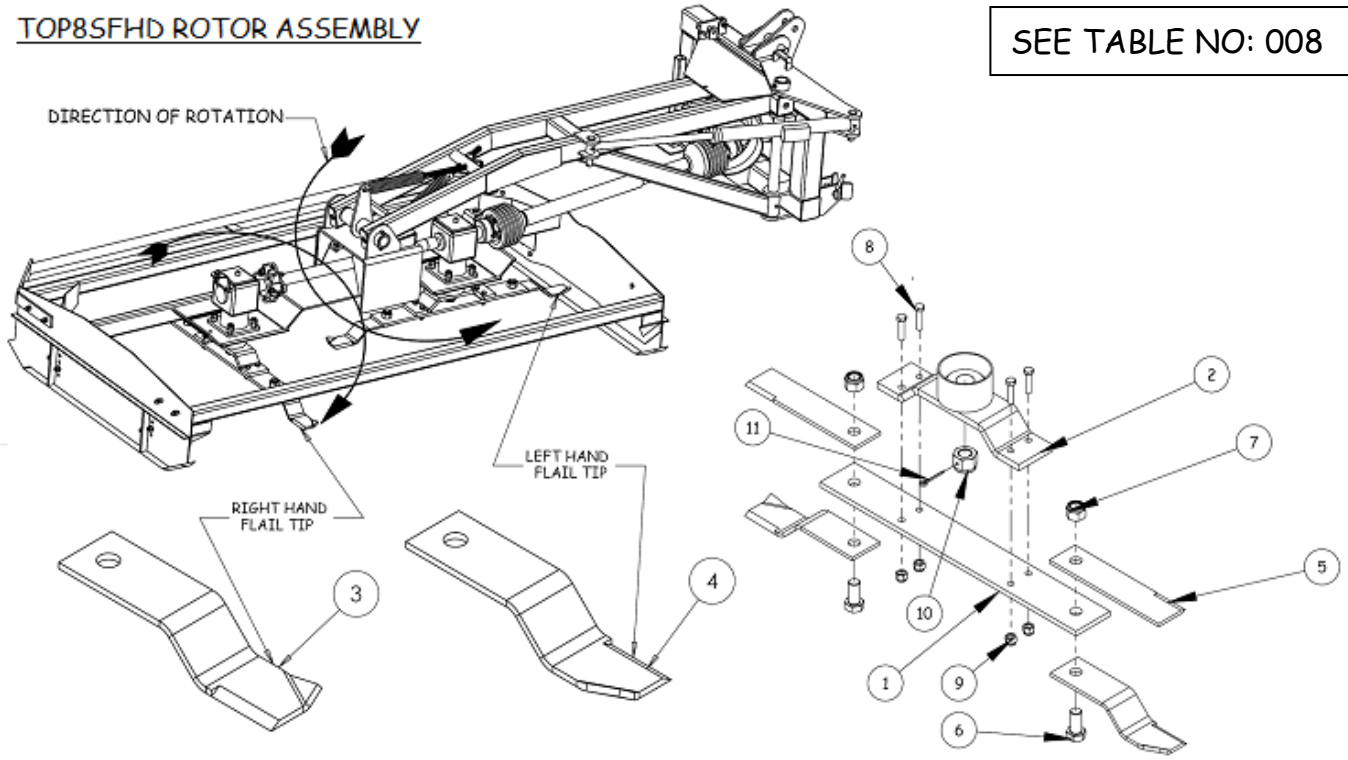
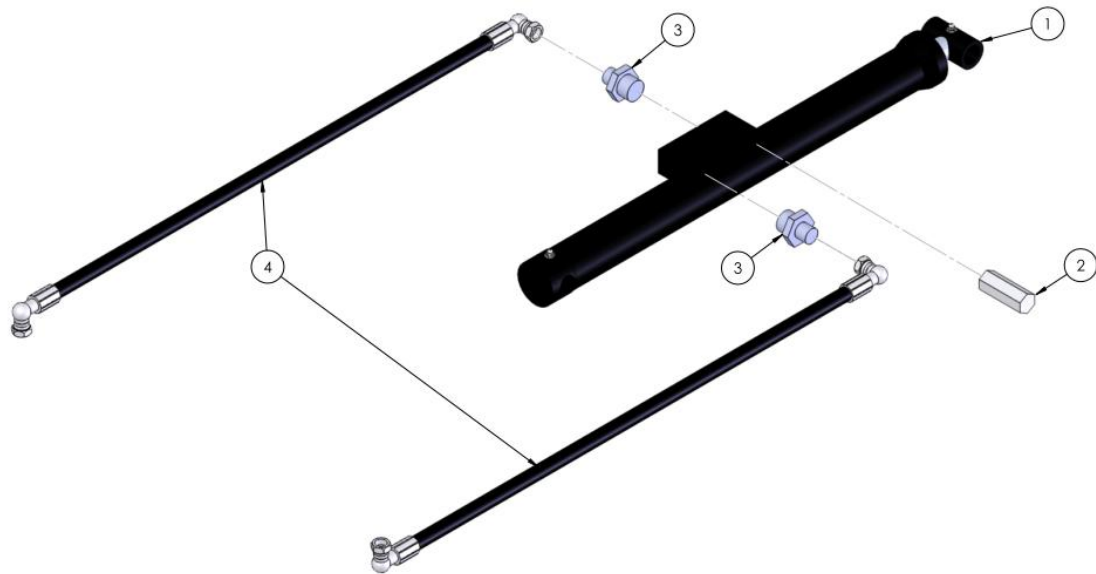


TABLE NO: 008 TOP8SFHD HEAVY DUTY TOPPER ROTOR ASSEMBLY

ITEM NO	DESCRIPTION	TOP8SFHD	
		CODE	QTY
1	750mm ROTOR BAR	ZGPP89	2
2	ROTAR BAR HOLDER	ZGPP108	2
3	TOPPER BLADE RIGHT HAND	ZGPP07	2
4	TOPPER BLADE LEFT HAND	ZGPP85	2
5	STRAIGHT TOPPER BLADE	ZGPP107	4
6	M24 x 60 BOLT	ZFAS70	4
7	M24 NYLOCK	ZFAS21	4
8	M14 x 50 BOLT	ZFAS41	8
9	M14 NYLOCK NUT	ZFAS42	8
10	TOPPER CASTLE NUT	GBL.0.140.7102.00	2
11	2" x 3/16" COTTER PIN	ZFAS140	2

TOP7SF, TOP8SF & TOP8SFHD HYDRAULIC SYSTEM



SEE TABLE NO: 009

TABLE NO: 009 TOP7SF, TOP8SF & TOP8SFHD HYDRAULIC SYSTEM

ITEM NO	DESCRIPTION	ALL MODELS	
		CODE	QTY
1	HYDRAULIC CYCLINDER COMPLETE	ZHYD01	1
2	REPLACEMENT CHECK VALVE	ZHYD40	1
3	¼" x 3/8" UNION	ZHYD07	2
4	7' HYDRAULIC HOSE COMPLETE	ZHYD02	2
5	¼" BONDED SEAL	ZHYD08	2
6	REPLACEMENT SEAL KIT	HYDSK8	1

SUPERFLOAT TOPPER GEARBOX PART No ZGPP58

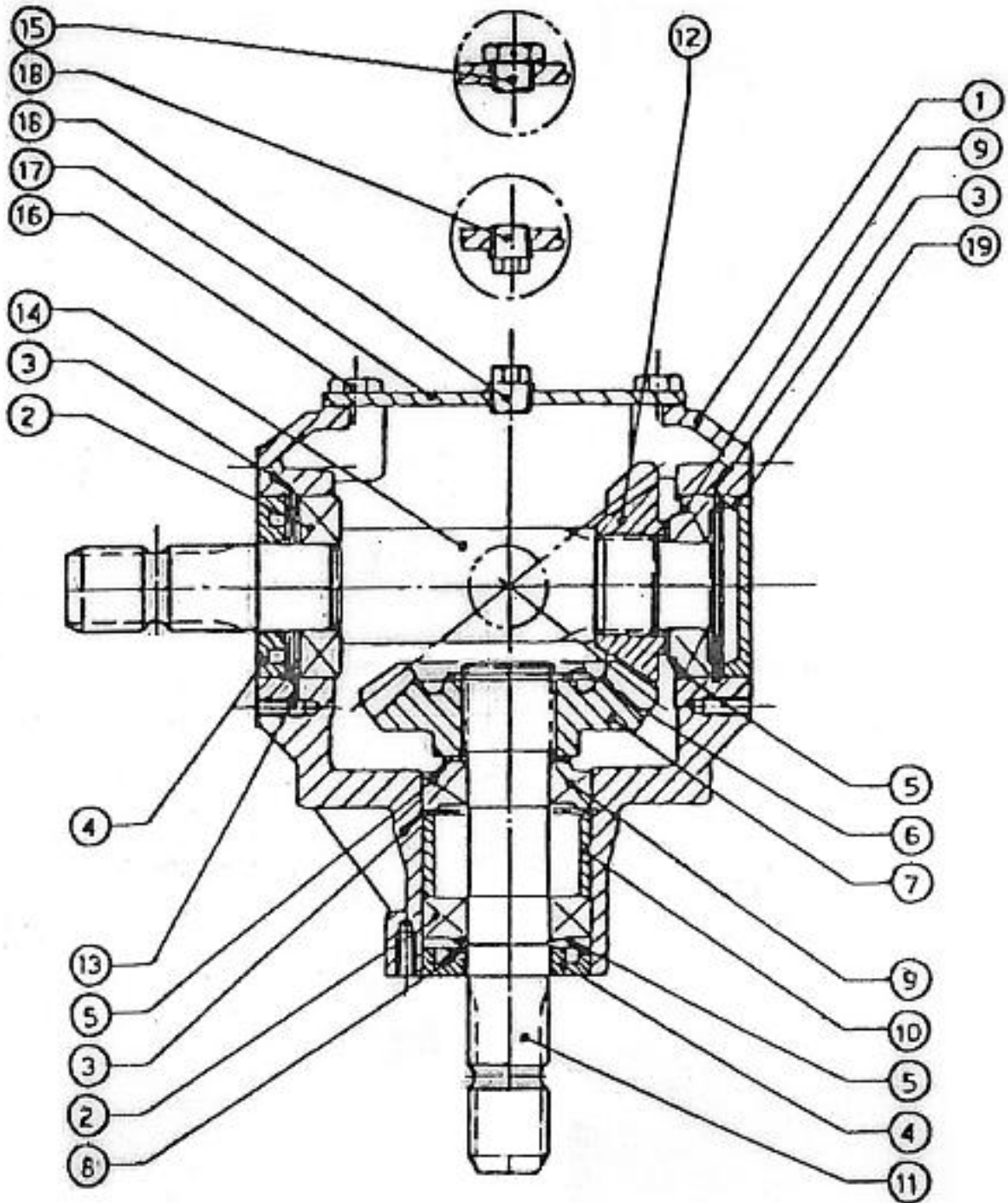


TABLE NO: 010 SUPERFLOAT TOPPER GEARBOX T27/A 9.267.045.00			
ZGPP58			
POS.	PART NO.	PCS.	DESCRIPTION:
1	0.267.0300.00	1	CASING
2	8.0.1.00870	2	BEARING
3	8.5.2.00131	3	SNAP RING 72 UNI7437
4	8.7.1.00152	2	DOUBLE LIP SEAL
5	0.259.7500.00	3	SHIM 48.0
6	8.5.1.00029	1	SNAP RING 40 UNI7435
7	0.268.6001.00	1	GEAR Z23 M5.4
8	8.5.1.00005	1	SNAP RING 35 UNI7435
9	8.0.9.00026	2	BALL BEARING
10	0.267.7100.00	1	SPACER
11	0.267.2001.00	1	SHAFT 1 3/8"
12	0.268.5001.00	1	PINION Z17 M5.4
13	0.248.7500.00	1	SHIM 71.7
14	0.267.3010.00	1	SHAFT 1 3/8"
15	0.107.7100.01	1	OIL FILLER PLUG
16	8.1.1.00054	4	BOLT M10X20 8.8
17	0.267.1302.00	1	COVER
18	ZGPP24	2	PLUG 3/8" GAS
19	8.7.0.00744	1	OIL CAP

STANDARD DUTY SUPERFLOAT TOPPER GEARBOX PART No ZGPP56

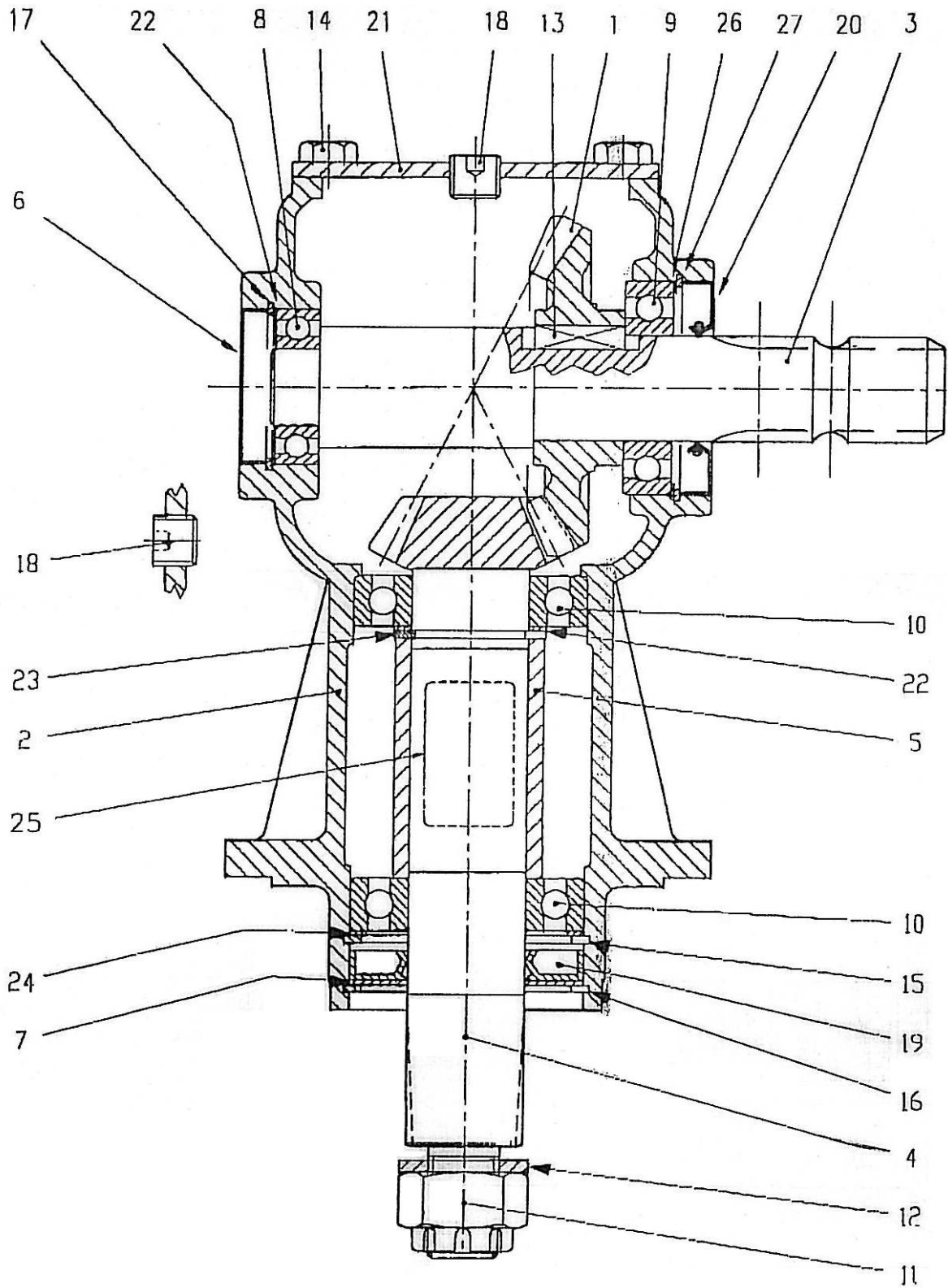


TABLE NO: 011 COMER L GEARBOX LF 9.205.805.00**ZGPP56**

POS.	PART NO.	PCS.	DESCRIPTION:
1	0.135.5000.00	1	CROWN GEAR Z23 M5
2	0.205.0300.00	1	CASING
3	0.135.2001.00	1	INPUT SHAFT 1 3/8" Z6
4	0.135.6008.00	1	PINION Z12 M5
5	0.135.7105.00	1	SPACER
6	8.7.0.00693	1	OIL CAP
7	1.135.7100.00	1	PROTECTIVE WASHER
8	8.0.1.00034	1	BALL BEARING
9	8.0.1.00870	1	BALL BEARING
10	8.0.1.00871	2	BALL BEARING
11	8.2.2.00515	1	CASTLE NUT M24X2 PR80B
12	8.3.2.00409	1	BOLT WASHER 25X44X4
13	8.4.1.00993	1	PARALLEL KEY B
14	8.1.1.00054	4	BOLTS M10X20 HHB (8.8)
15	8.5.2.00030	1	SNAP RING (80X83.5X2.5)
16	8.5.3.00955	1	SNAP RING SB 81
17	8.5.2.01358	1	SNAP RING (52X55X2.5)
18	8.6.6.00201	2	3/8" GAS SOLID PLUG
19	8.7.1.00748	1	DUST LIP SEAL
20	8.7.3.00055	1	OIL SEAL
21	0.205.1300.00	1	COVER
22	0.244.7500.00	2	SHIM KIT (40.3X51.5)
23	8.5.1.00680	1	SNAP RING (40X37.5X2.5)
24	0.267.7500.00	1	SHIM KIT (69X79.7)
25	0.124.7135.00	1	NAME PLATE
26	0.248.7500.00	1	SHIM KIT (60.3X71.7)
27	8.5.2.00131	1	SNAP RING (72X75X2.5)

STANDARD DUTY SUPERFLOAT TOPPER GEARBOX PART No ZGPP55

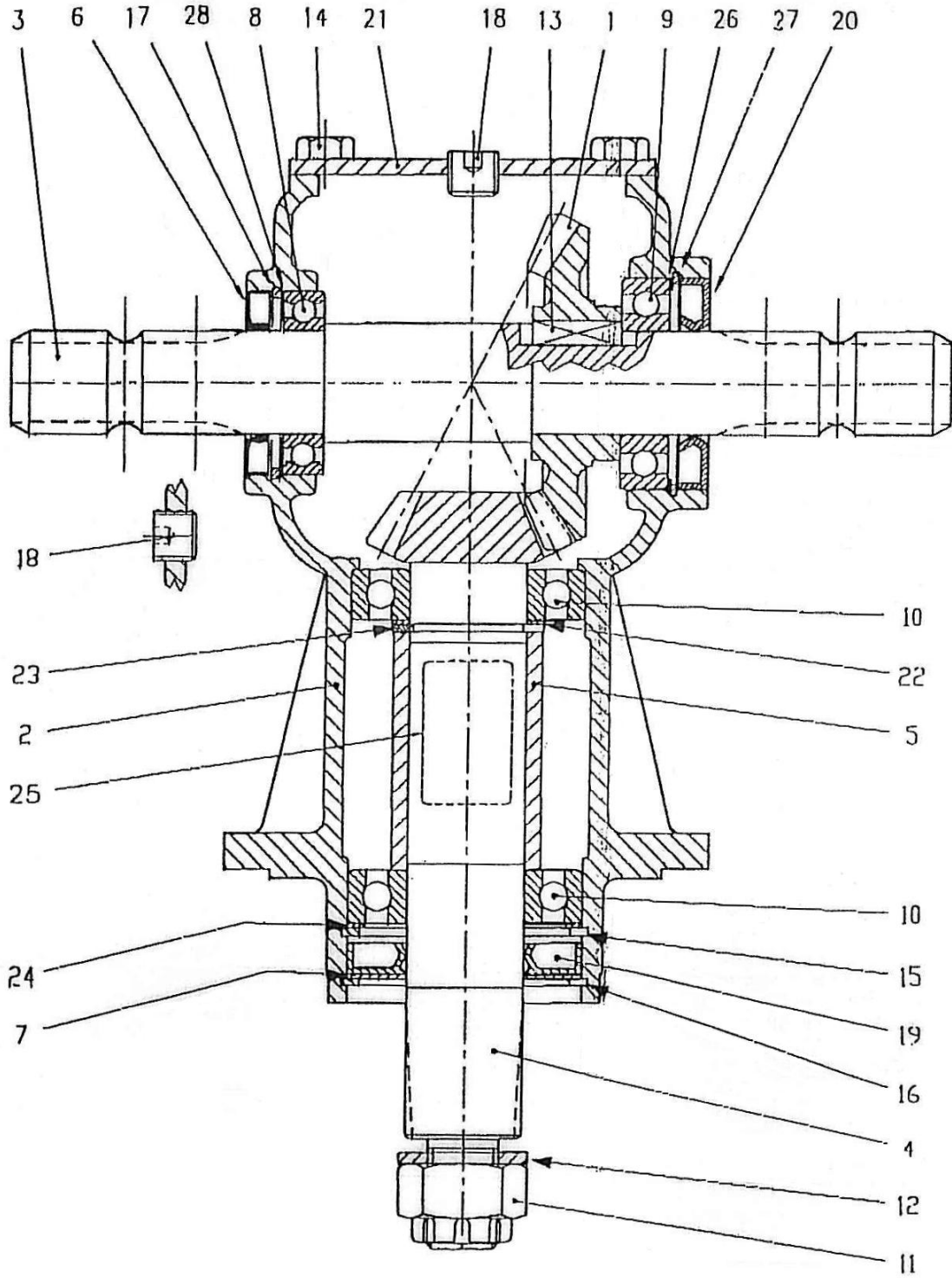
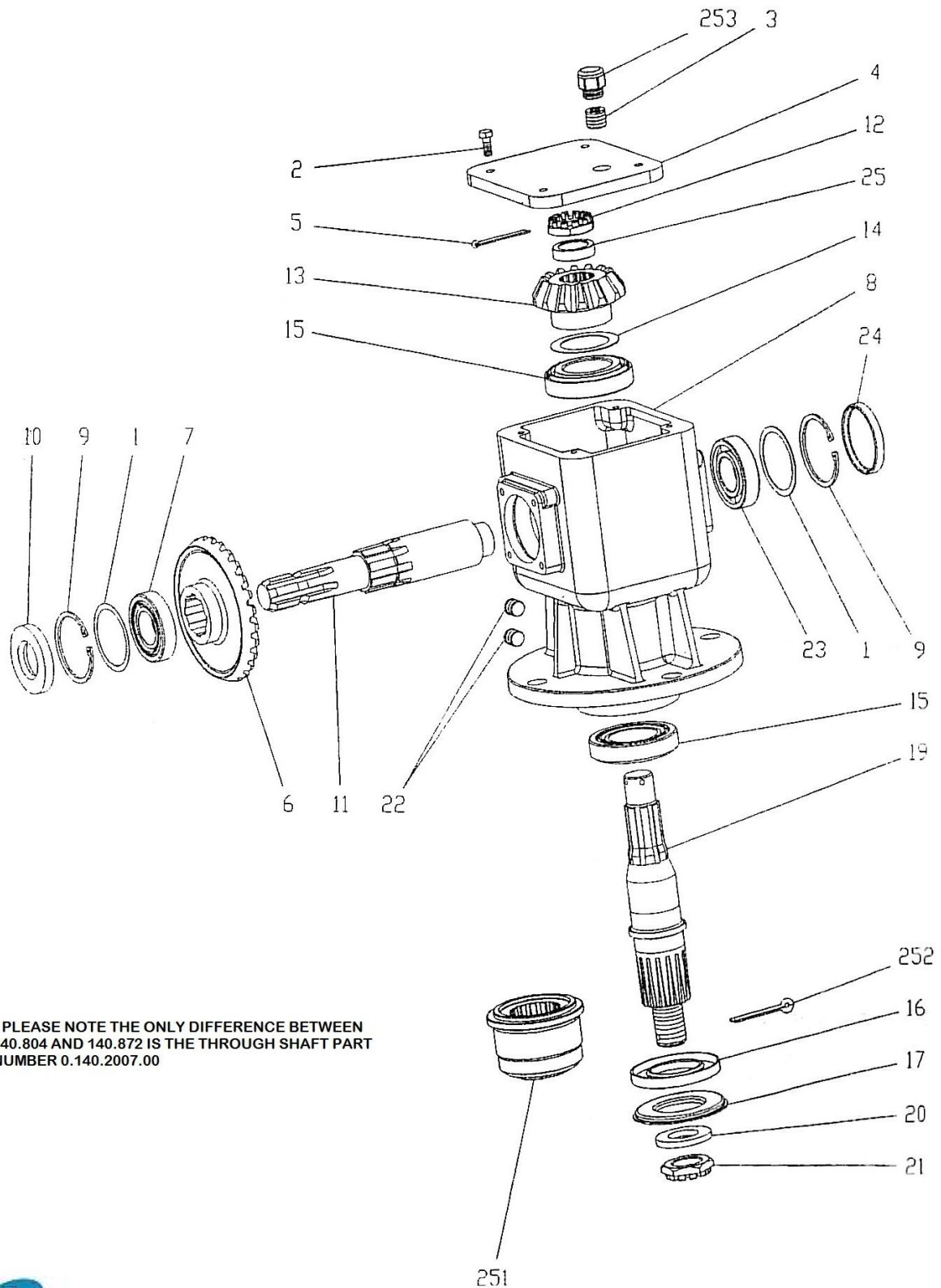


TABLE NO: 012 8ft TOPPER GEARBOX LF 9.205.809.00**ZGPP55**

POS.	PART NO.	PCS.	DESCRIPTION:
1	0.135.5000.00	1	CROWN GEAR Z23 M5
2	0.205.0301.00	1	CASING
3	0.135.2002.00	1	INPUT SHAFT 1 3/8" Z6
4	0.135.6008.00	1	PINION Z12 M5
5	0.135.7105.00	1	SPACER
6	8.7.3.01259	1	OIL SEAL
7	1.135.7100.00	1	PROTECTIVE WASHER
8	8.0.1.00000	1	BALL BEARING
9	8.0.1.00870	1	BALL BEARING
10	8.0.1.00871	2	BALL BEARING
11	8.2.2.00515	1	CASTLE NUT M24X2 PR80B
12	8.3.2.00409	1	BOLT WASHER 25X44X4
13	8.4.1.00993	1	PARALLEL KEY B
14	8.1.1.00054	4	BOLTS M10X20 HHB (8.8)
15	8.5.2.00030	1	SNAP RING (80X83.5X2.5)
16	8.5.3.00955	1	SNAP RING SB 81
17	8.5.2.00648	1	SNAP RING (52X55X2.5)
18	8.6.6.00201	2	3/8" GAS SOLID PLUG
19	8.7.1.00748	1	DUST LIP SEAL
20	8.7.3.00055	1	OIL SEAL
21	0.205.1300.00	1	COVER
22	0.244.7500.00	2	SHIM KIT (40.3X51.5)
23	8.5.1.00680	1	SNAP RING (40X37.5X2.5)
24	0.267.7500.00	1	SHIM KIT (69X79.7)
25	0.124.7135.00	1	NAME PLATE
26	0.248.7500.00	1	SHIM KIT (60.3X71.7)
27	8.5.2.00131	1	SNAP RING (72X75X2.5)
28	0.113.7500.00	1	SHIM KIT (55.4X617)

TOP8SFHD HEAVY DUTY TOPPER GEARBOXES ZGPP105 & ZGPP106

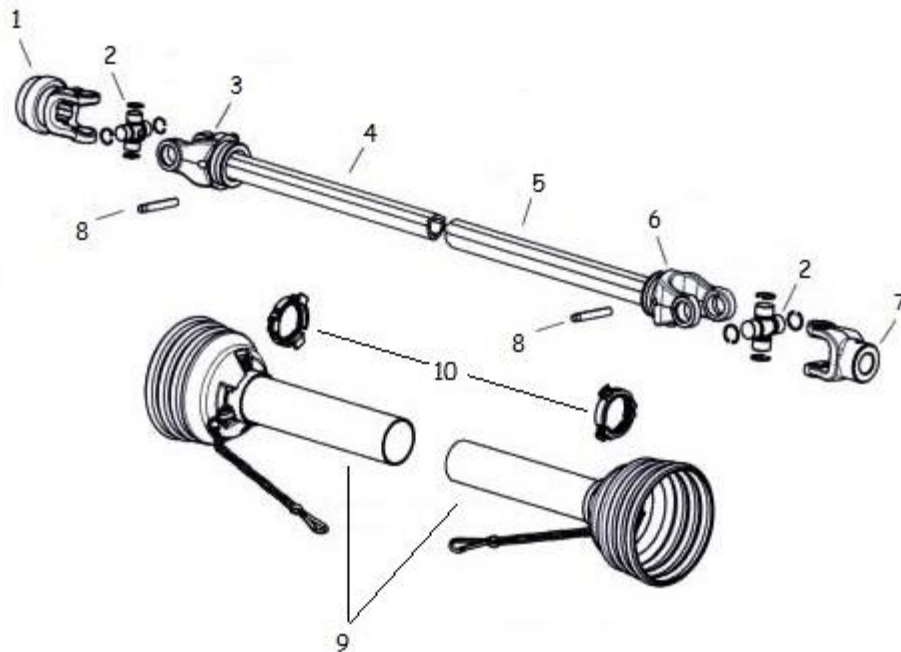


* PLEASE NOTE THE ONLY DIFFERENCE BETWEEN 140.804 AND 140.872 IS THE THROUGH SHAFT PART NUMBER 0.140.2007.00

TABLE NO: 013 COMER L/T GEARBOX 9.140.804.20 /9.140.872.20**ZGPP105 & ZGPP106**

POS.	PART NO.	PCS.	DESCRIPTION:
1	0.248.7500.00		SHIM 71.7
2	8.1.1.00041	4	BOLT
3	8.6.6.00088	1	OIL FILLER PLUG ½"
4	0.140.1302.00	1	COVER
5	8.4.7.01111	3	SPLIT PIN B4X55
6	0.130.5001.00	1	MAIN GEAR Z27 M5.64
7	8.0.9.00026	1	BALL BEARING
8	0.140.0300.00	1	CASING
9	8.5.2.00131	2	CIRCLIP 72 UNI7437
10	8.7.1.00152	1	OIL SEAL
11	0.140.2000.00	1	SHAFT 1 3/8" Z6
12	0.132.7106.00	1	CASTLE NUT M30X1.5
13	0.116.6005.00	1	PINION COG Z14 M5.64
14	0.712.7500.00	1	SHIM 50.3X70.3
15	8.0.9.00469	1	BALL BEARING
16	8.1.1.00054	1	OIL SEAL
17	0.139.7100.00	1	PROTECTION WASHER
18	0.124.7135.00	1	
19	0.140.3002.00	1	PINION SHAFT
20	0.139.7101.00	1	WASHER
21	0.140.7102.00	1	CASTLE NUT
22	8.6.6.00201	2	GAS PLUGS 3/8"
23	8.0.1.00870	1	BALL BEARING
24	8.7.0.00744	1	OIL CAP
25	0.132.7109.00	1	DISTANCE SPACER
	0.140.2007.00	1	STRAIGHT SHAFT FOR T BOX

SUPERFLOAT TOPPER PTO SHAFT PART No: ZGPP114



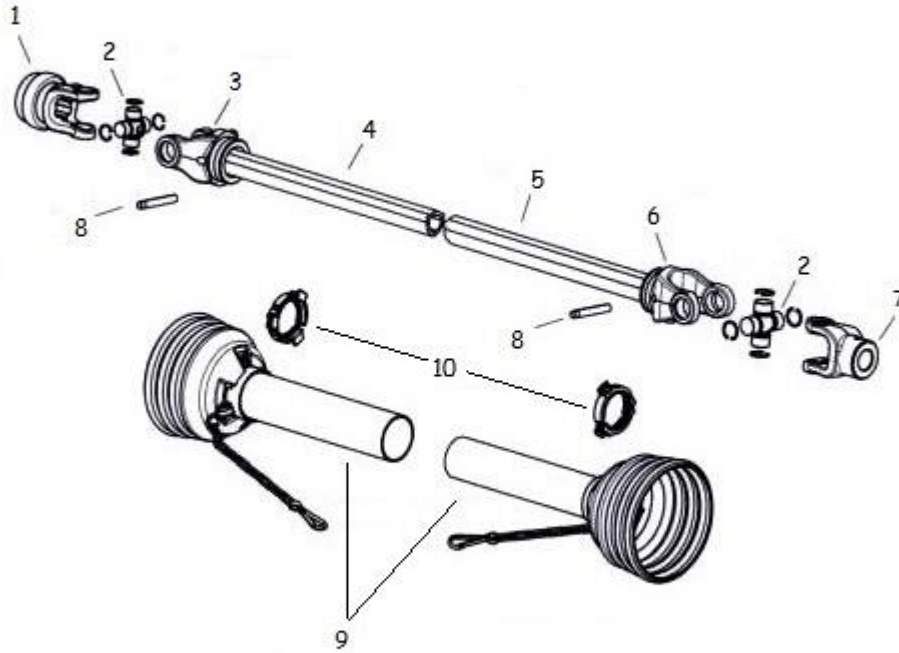
SEE TABLE NO: 014

TABLE NO: 014 7/8ft SIDE MOUNTED TOPPER SHEARBOLT PTO SHAFT

ZGPP114

POS.	PART NO.	PCS.	DESCRIPTION:
1	P8S-102-6506	1	1 3/8" x 6 SPLINED YOKE
2	P8S-200-6580	2	CROSS & BEARING KIT
3	P8S-300-6545	1	INNER PROFILE YOKE
4	P9T-610-4504-000	1	INNER PROFILE TUBE 3m
5	P8S-610-5203-000	1	OUTER PROFILE TUBE 3m
6	P8S-300-6552	1	OUTER PROFILE YOKE
7	P8S-580-6506-19	1	SHEARBOLT CLUTCH
8	P8S-508-1085	1	M10 x 85mm ROLL PIN
9	P8S-907-3500-111	1	SAFETY COVER
10	P8S-961-3505	1	SAFETY COVER BEARING KIT

SUPERFLOAT TOPPER PTO SHAFT PART No: ZGPP91



Weasler®

SEE TABLE NO: 015

TABLE NO: 015 7/8ft SIDE MOUNTED TOPPER OVER RUN PTO SHAFT

ZGPP91			
POS.	PART NO.	PCS.	DESCRIPTION:
1	P8S-102-6506	1	1 3/8" x 6 SPLINED YOKE
2	P8S-200-6580	2	CROSS & BEARING KIT
3	P8S-300-6545	1	INNER PROFILE YOKE
4	P9T-610-4504-000	1	INNER PROFILE TUBE 3m
5	P8S-610-5203-000	1	OUTER PROFILE TUBE 3m
6	P8S-300-6552	1	OUTER PROFILE YOKE
7	P8S-550-6506-00	1	OVER RUN CLUTCH
8	P8S-508-1085	1	M10 x 85mm ROLL PIN
9	P8S-907-3500-071	1	SAFETY COVER
10	P8S-961-3505	1	SAFETY COVER BEARING KIT

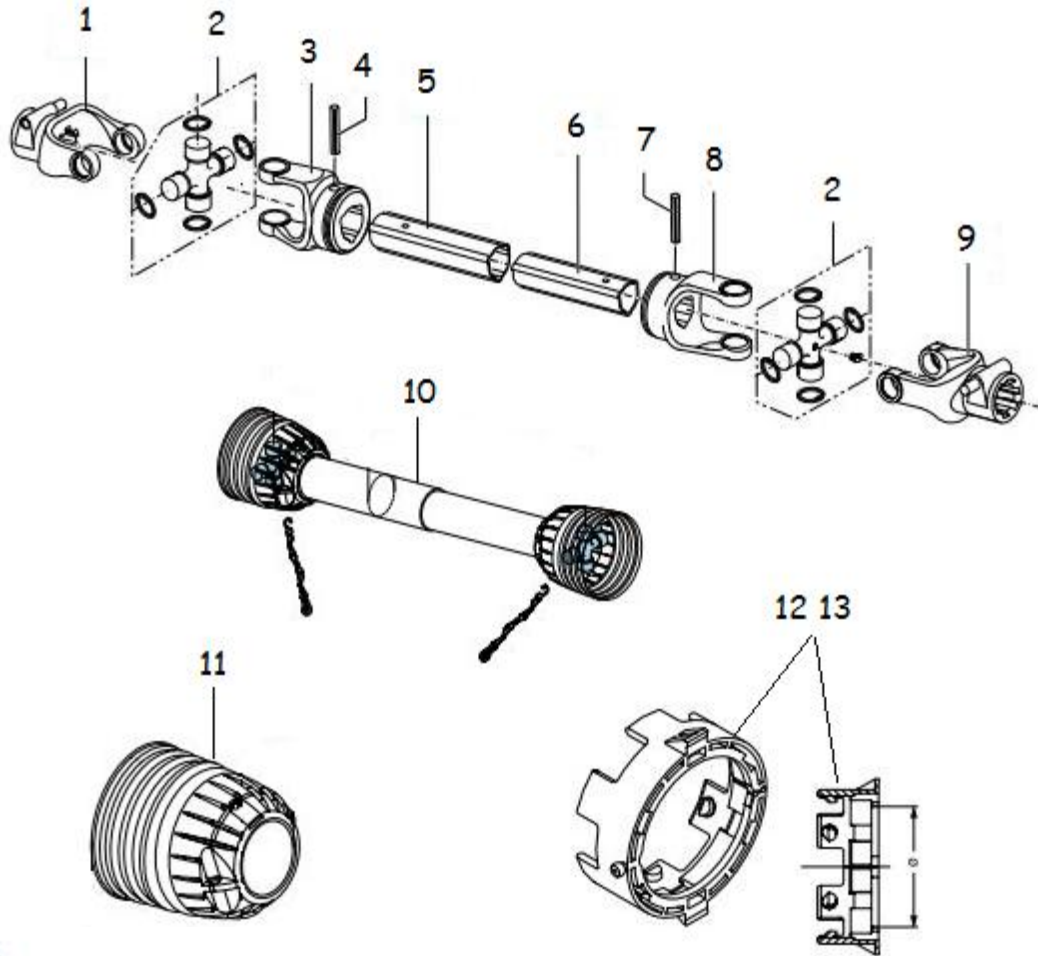
WEASLER OVER RUN PTO PARTS



SEE TABLE NO: 016

TABLE NO 016: 7/8ft SUPERFLOAT TOPPER PTO SHAFT OVER RUN CLUTCH END COMPONENTS			
ZGPP91			
POS.	PART NO.	PCS.	DESCRIPTION:
1	P8S-552-0050537	2	PAWL
2	P8S-552-0050436	2	LEAF SPRING
3	P8S-551-5000005	1	SUPPORT RING
4	P8S-39-36061	1	HUB
5	P8S-572-0000103	3	BALL BEARING
6	P8S-552-0000508	1	D72 SNAP RING
7	P8S-552-0000510	1	BACK UP RING
8	P8S-572-0000104	1	SPRING
9	P8S-572-1000102	1	COLLAR
10	P8S-572-0000514	1	BACK UP RING
11	P8S-572-0000515	1	D46 SNAP RING

SUPERFLOAT TOPPER PTO SHAFT PART No: ZGPP114



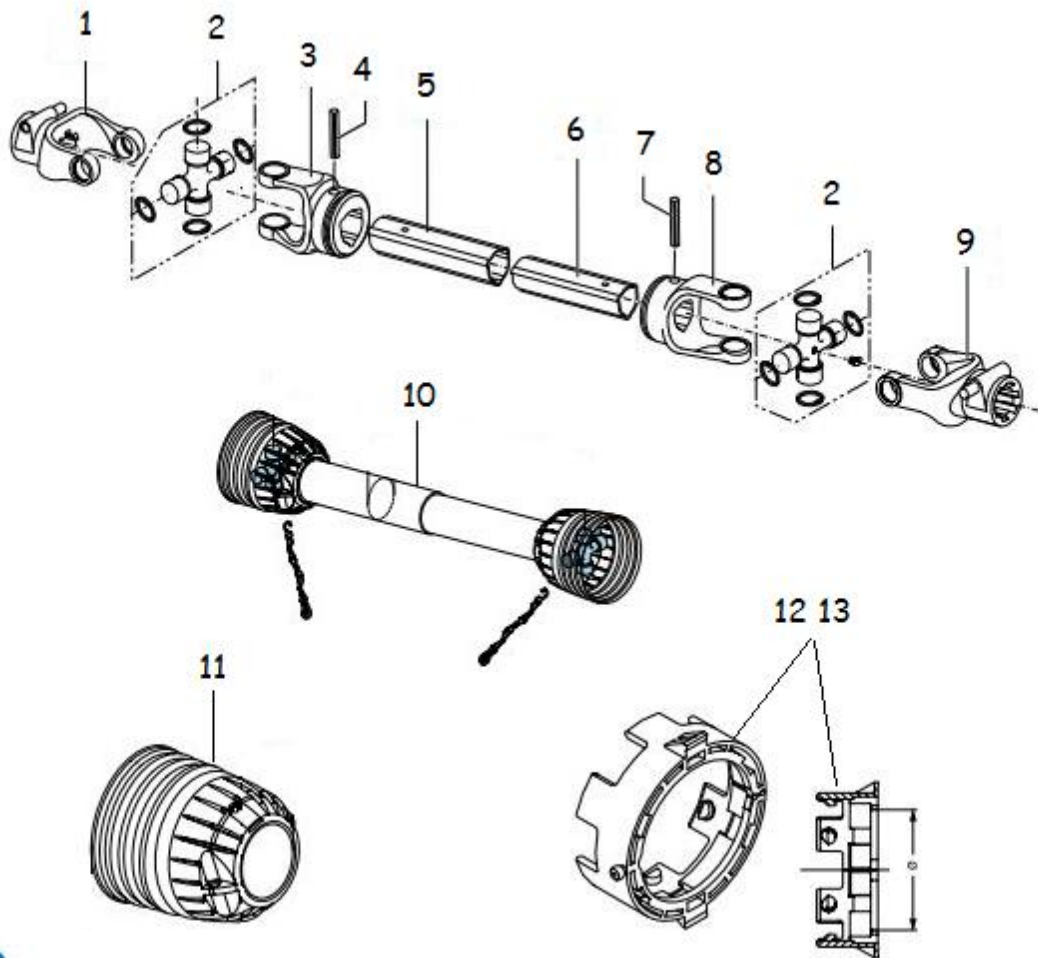
SEE TABLE NO: 017

TABLE NO: 017 7/8ft SIDE MOUNTED TOPPER SHEARBOLT PTO SHAFT

ZGPP114

POS.	PART NO.	PCS.	DESCRIPTION:
1	P8C-141-025-363	2	1 3/8" x 6 SPLINED YOKE
2	P8S-200-6580	2	CROSS & BEARING KIT
3	P8C-151-015-011	1	OUTER PROFILE YOKE
4	P8C-190-000-016	1	M10 x 70mm ROLL PIN
5	P9T-610-4504-000	1	INNER PROFILE TUBE 3m
6	P8S-610-5203-000	1	OUTER PROFILE TUBE 3m
7	P8C-190-000-394	1	M10 x 65mm ROLL PIN
8	P8C-151-015-012	1	INNER PROFILE YOKE
9	P8C-143-250-001	1	SHEARBOLT YOKE
10	P8C-142-350-015-9550	1	SAFETY COVER
11	P8C-180-036-633	1	SAFETY COVER CONE
12	P8C-180-015-391	1	(a=62.5mm) COVER BEARING
13	P8C-180-015-390	1	(a=54.5mm) COVER BEARING

SUPERFLOAT TOPPER PTO SHAFT PART No: ZGPP91



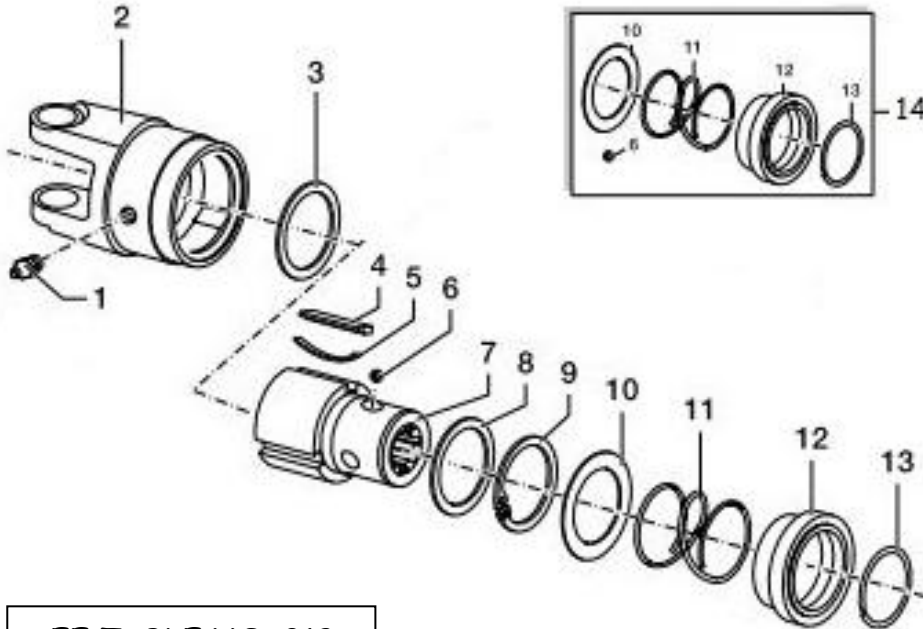
SEE TABLE NO: 018

TABLE NO: 018 7/8ft SIDE MOUNTED TOPPER OVER RUN PTO SHAFT

ZGPP91

POS.	PART NO.	PCS.	DESCRIPTION:
1	P8C-141-025-363	2	1 3/8" x 6 SPLINED YOKE
2	P8S-200-6580	2	CROSS & BEARING KIT
3	P8C-151-015-011	1	OUTER PROFILE YOKE
4	P8C-190-000-016	1	M10 x 70mm ROLL PIN
5	P9T-610-4504-000	1	INNER PROFILE TUBE 3m
6	P8S-610-5203-000	1	OUTER PROFILE TUBE 3m
7	P8C-190-000-394	1	M10 x 65mm ROLL PIN
8	P8C-151-015-012	1	INNER PROFILE YOKE
9	P8C-145-255-011	1	OVER RUN YOKE
10	P8C-142-350-015-9550	1	SAFETY COVER
11	P8C-180-036-633	1	SAFETY COVER CONE
12	P8C-180-015-391	1	(a=62.5mm) COVER BEARING
13	P8C-180-015-390	1	(a=54.5mm) COVER BEARING

COMER OVER RUN PTO SHAFT PARTS



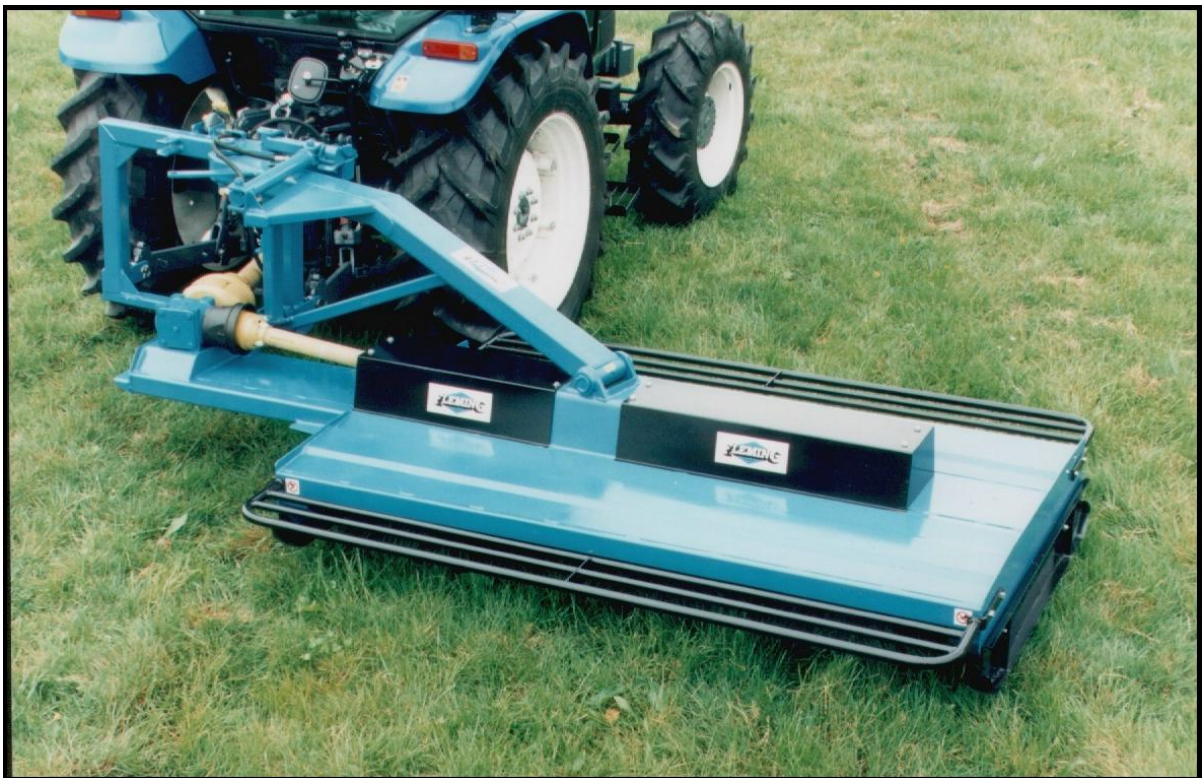
SEE TABLE NO: 019

TABLE NO: 019 COMER OVER RUN PTO SHAFT PARTS

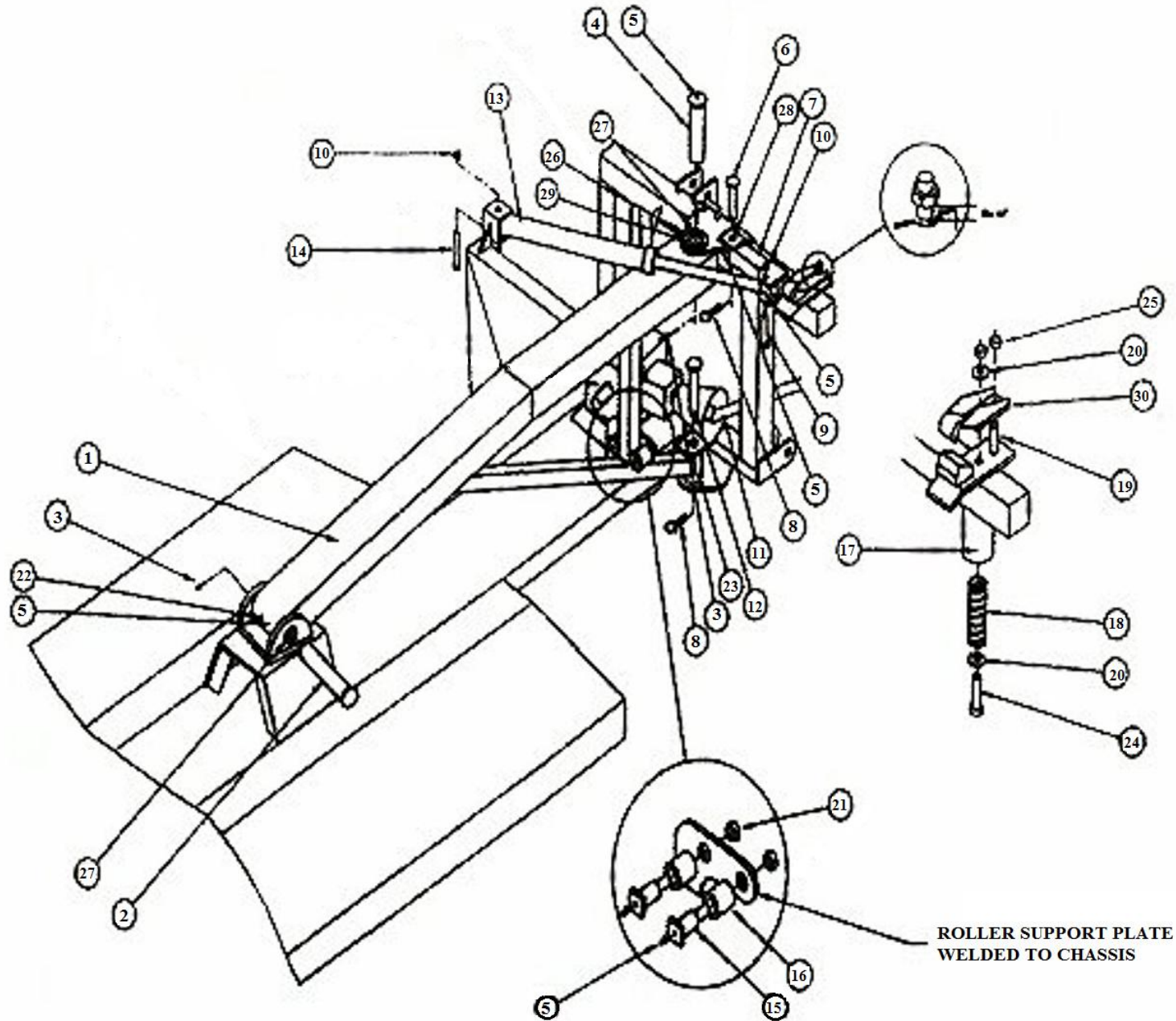
ZGPP91

POS.	PART NO.	PCS.	DESCRIPTION:
1	P8C-190-000-020	1	GREASE NIPPLE
2	P8C-141-025-210	1	YOKE SUPPORT
3	P8C-190-000-199	1	RETAINING WASHER
4	P8C-151-014-136	3	PAWL
5	P8C-180-014-137	3	SPRING
6	P8C-190-000-078	3	BALL BEARING
7	P8C-151-016-546	1	HUB
8	P8C-180-014-135	1	RETAINING WASHER RING
9	P8C-190-000-183	1	CIRCLIP
10	P8C-180-015-143	1	SPRING PUSH RING
11	P8C-180-016-487	1	COLLAR SPRING
12	P8C-151-016-486	1	COLLAR
13	P8C-190-000-451	1	SNAP RING
14	P8C-165-000-628	1	COLLAR REPAIR KIT

OLD STYLE TOP8SM GRASS TOPPER SPARE PARTS LIST



TOP8SM A FRAME ASSEMBLY

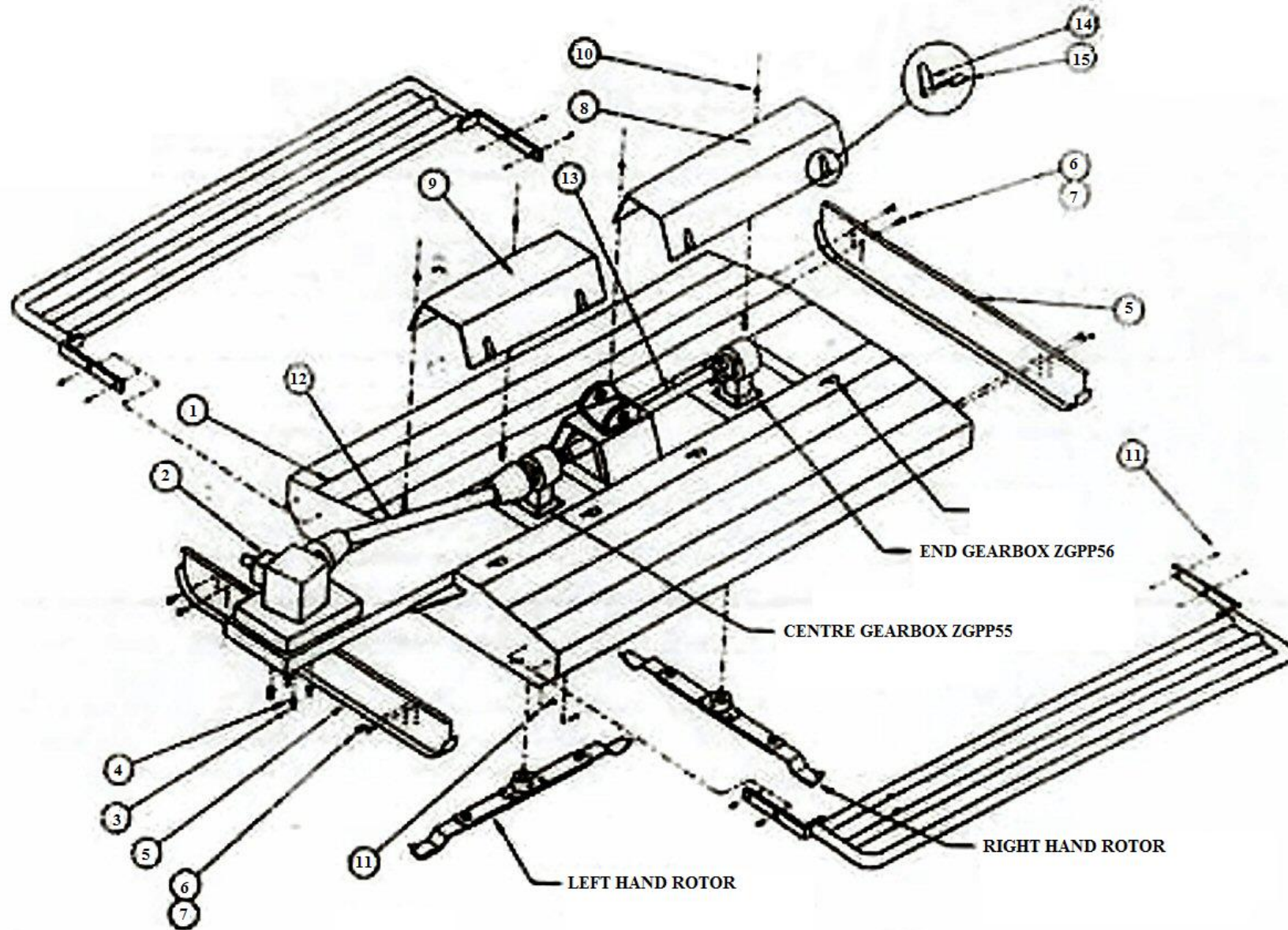


SEE TABLE NO: 001

TABLE NO: 001 TOP8SM TOPPER A FRAME ASSEMBLY

POS.	PART NO.	PCS.	DESCRIPTION:
1	TOPCNR302	1	CARRIER ARMS
2	TOPCNR184	1	LOCATION PIN
3	TOPCNR185	2	SPLIT PIN
4	TOPCNR186	1	LOCATION PIN
5	TOPCNR187	6	3 3/8" GREASE NIPPLE
6	TOPCNR188	1	LOCATION PIN
7	TOPCNR189	1	BREAKAWAY ARM
8	TOPCNR190	3	LINCH PIN
9	ZFAS83	1	M20x90 BOLT
10	ZFAS24	2	M20 NYLOCK COARSE
11	ZGPP91	1	PTO SHAFT
12	TOPCNR192	1	LOCATION PIN
13	TOPCNR01170	1	HYDRAULIC RAM
14	ZFAS38	1	M20x120 BOLT
15	TOPCNR193	2	ROLLER CLAMP
16	TOPCNR194	2	ROLLER
17	TOPCNR195	1	SPRING PIPE
18	TOPCNR196	1	SPRING
19	ZFAS82	2	M16x60 BOLT
20	ZFAS36	2	M16 WASHER ZP
21	TOPCNRBLT112	2	M20 NYLOCK FINE
22	TOPCNR303	1	BUSHING 80x50x160
23	TOPCNR304	1	BUSHING 50x25x100
24	TOPCNRBLT065	1	M16x180 BOLT
25	ZFAS23	1	M16 NYLOCK
26	TOPCNR199	1	BUSHING 80x50x110
27	TOPCNR200	1	BUSHING 80x25x20
28	TOPCNR201	4	BUSHING 50x25x65
29	TOPCNRBLT073	1	M20x90 BOLT
30	TOPCNR479	1	RELEASE ASSEMBLY

TOP8SM MAIN FRAME ASSEMBLY

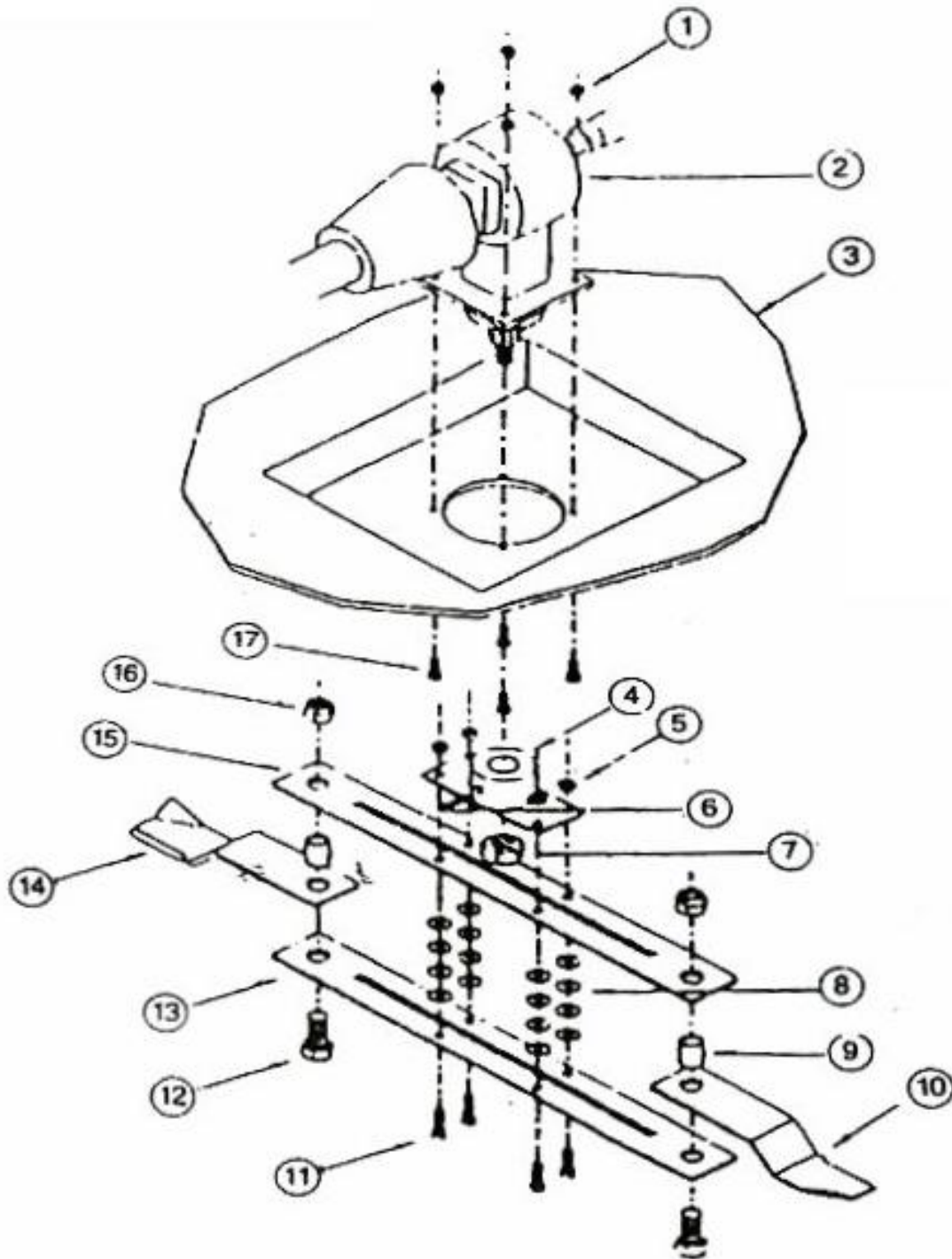


SEE TABLE NO: 002

TABLE NO: 002 TOP8SM TOPPER MAIN FRAME ASSEMBLY

POS.	PART NO.	PCS.	DESCRIPTION:
1	TOPCNR202	1	MAIN CHASSIS
2	ZGPP58	1	MAIN GEARBOX
3	ZFAS07	4	M10x30 SETSCREW
4	ZFAS03	4	M10 WASHER ZP
5	TOPCNR015	2	TOP8SM SKID
6	ZFAS10	2	M12x30 SETSCREW
7	ZFAS22	2	M12 NYLOCK NUT
8	TOPCNR204	1	BACK GEARBOX COVER
9	TOPCNR205	1	FRONT GEARBOX COVER
10	ZFAS07	4	M10x30 SETSCREW
11	ZFAS20	4	M10 NYLOCK NUT
12	ZGPP114	1	PTO SHAFT
13	TOPCNR00014	1	CONNECTING SHAFT 875mm
13	TOPCNR00235	1	CONNECTING SHAFT 715mm
14	TOPCNR208	4	BONNET HINGE
15	TOPCNR193	4	BONNET HINGE

TOP8SM FRONT LHD ROTOR

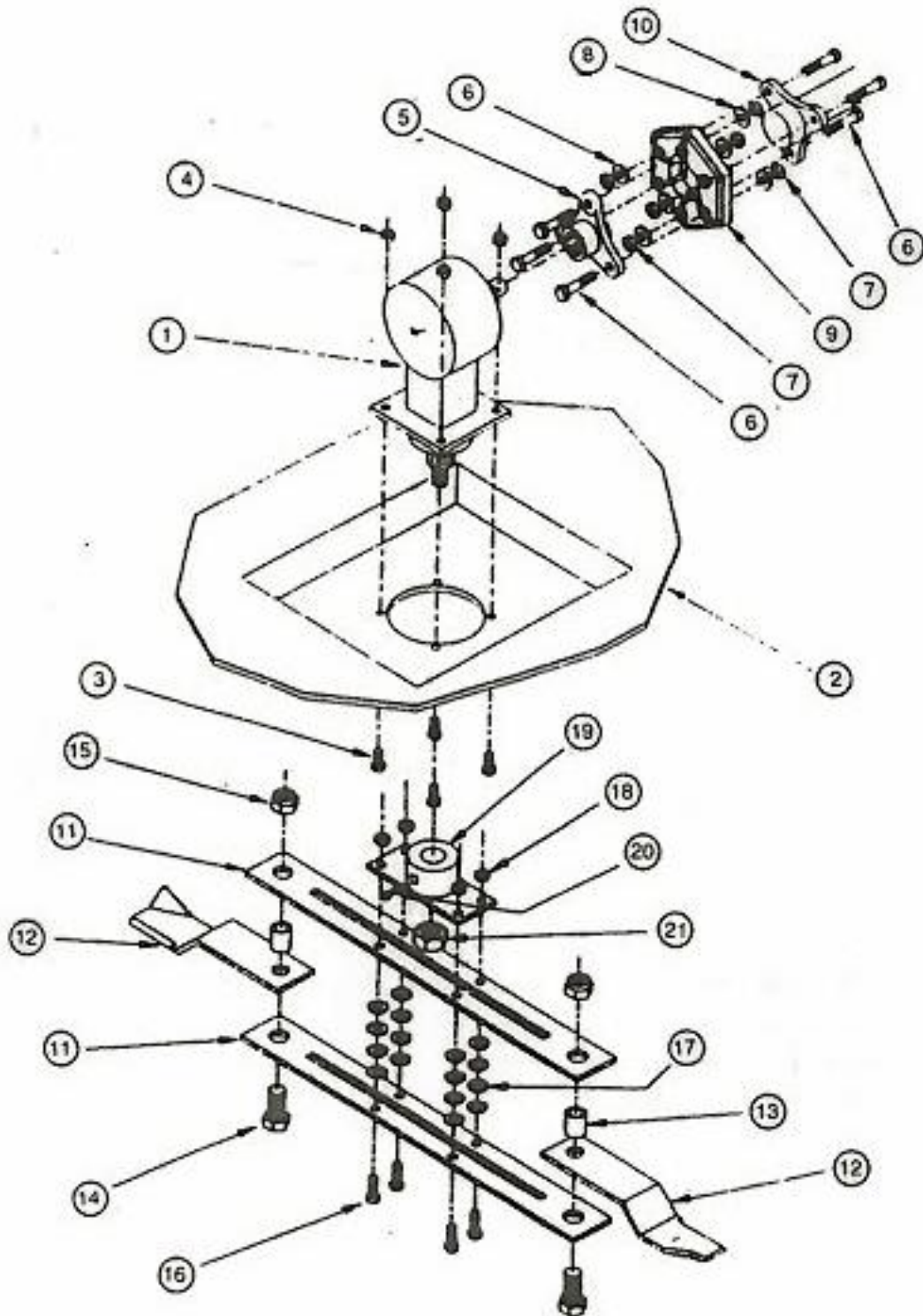


SEE TABLE NO: 003

TABLE NO: 003 TOP8SM FRONT LHD ROTOR

POS.	PART NO.	PCS.	DESCRIPTION:
1	ZFAS23	4	M16 NYLOCK NUT
2	ZGPP55	1	'T' SHAPED GEARBOX
3		1	MAIN FRAME
4	TOPCNR00050	1	CARRIER HOUSING BUSHING
5	ZFAS123	4	½" UNF NYLOCK NUT
6	ZFAS58	1	COTTER PIN
7	GBL.8.2.2.01144	1	CASTLE NUT
8	ZFAS45	16	M12 WASHER
9	ZGPP29	2	BLADE BUSH
10	ZGPP08	1	LHD TOPPER BLADE
11	ZFAS122	4	½" x 2" UNF BOLT
12	ZFAS37	2	M20x55 SETSCREW
13	TOPCNR00044	1	FLAIL CARRIER 720mm
14	ZGPP08	1	LHD TOPPER BLADE
15	TOPCNR00044	1	FLAIL CARRIER 720mm
16	ZFAS24	2	M20 NYLOCK
17	ZFAS11	4	M16X45 SETSCREW

TOP8SM END RHD ROTOR



SEE TABLE NO: 004

TABLE NO: 004 TOP8SM TOPPER END RHD ROTOR

POS.	PART NO.	PCS.	DESCRIPTION:
1	ZGPP56	1	205.805 GEARBOX
2			MAIN FRAME
3	ZFAS11	4	M16X45 SETSCREW
4	ZFAS23	4	M16 NYLOCK NUT
5	ZGPP116	1	TRIPOD COUPLING
6	ZFAS47	6	M12X80 BOLT
7	ZFAS22	6	M12 NYLOCK NUT
8	ZFAS45	16	M12 WASHER
9	ZGPP82	1	RUBBER DOUGHNUT
10	TOPCNR00014	1	CONNECTING SHAFT
11	TOPCNR00044	2	FLAIL CARRIER 720mm
12	ZGPP09	2	RHD TOPPER BLADE
13	ZGPP29	2	BLADE BUSH
14	ZFAS37	2	M20x55 SETSCREW
15	ZFAS24	2	M20 NYLOCK
16	ZFAS122	4	½" x 2" UNF BOLT
17	ZFAS45	16	M12 WASHER
18	ZFAS123	4	½" UNF NYLOCK NUT
19	TOPCNR00050	1	CARRIER HOUSING BUSHING
20	ZFAS58	1	COTTER PIN
21	GBL.8.2.2.01144	1	CASTLE NUT