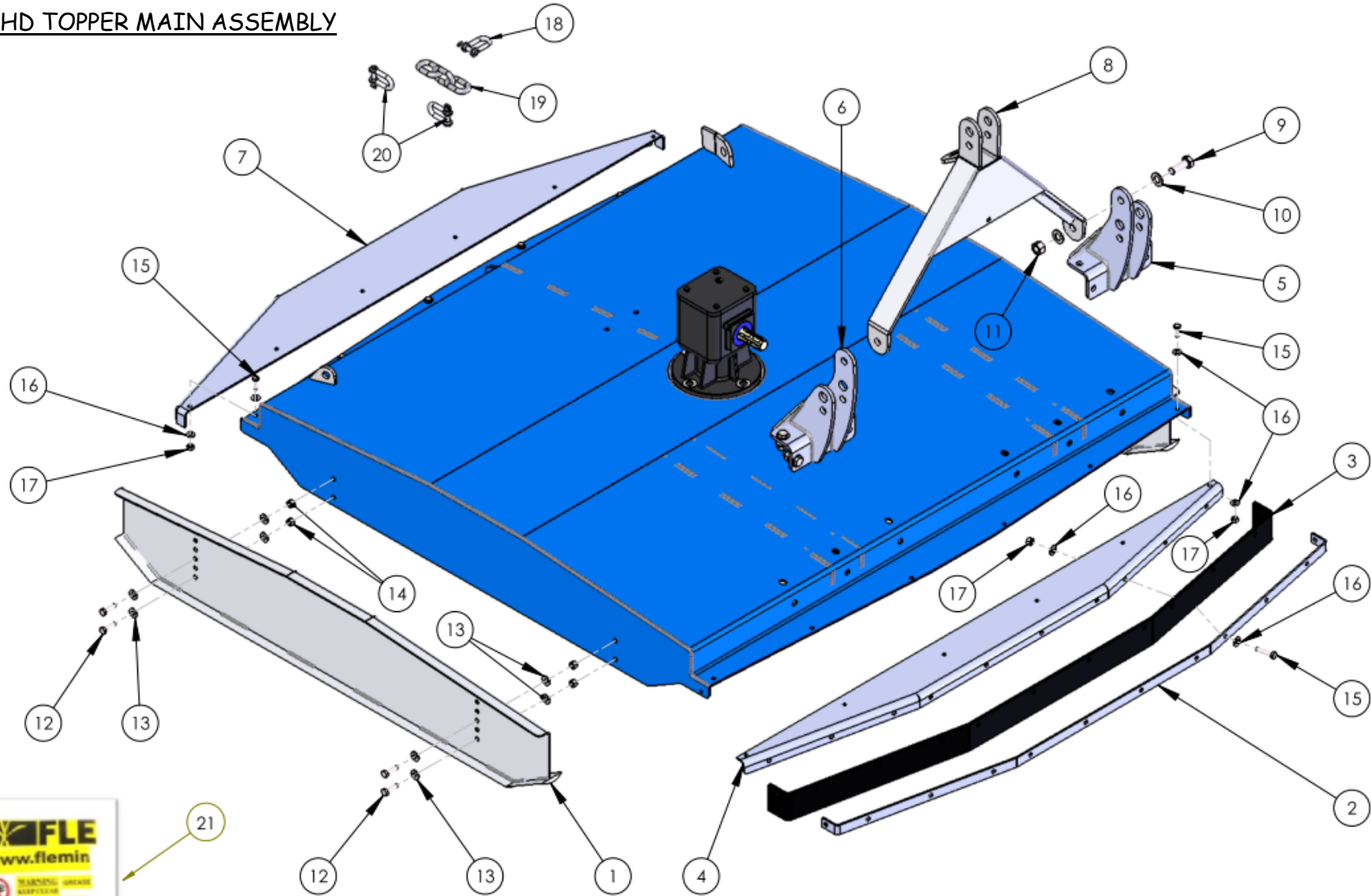




HEAVY DUTY 6ft TOPPER SPARE PARTS LIST

TOP6HD TOPPER MAIN ASSEMBLY



SEE TABLE NO: 001

TABLE NO: 001 TOP6HD TOPPER MAIN ASSEMBLY			
ITEM NO	DESCRIPTION	TOP6HD	
		CODE	QTY
1	TOP6HD SKID	P001.635	2
2	SAFETY GUARD RETAINING STRIP (OPTIONAL)	P001.636	1
3	FRONT SAFETY GUARD (OPTIONAL)	P001.637	1
4	SAFETY GUARD SUPPORT BRACKET (OPTIONAL)	P001.638	1
5	RHD 3.P.L SUPPORT	P001.639	1
6	LHD 3.P.L SUPPORT	P001.640	1
7	REAR SAFETY GUARD SUPPORT	P001.641	1
8	A-FRAME	P001.054	1
9	M20x55 SETSCREW ZP	ZFAS37	2
10	M20 WASHER ZP	ZFAS39	4
11	M20 NYLOCK NUT	ZFAS24	2
12	M12x40 SETSCREW ZP	ZFAS51	8
13	M12 WASHER ZP	ZFAS45	16
14	M12 NYLOCK NUT	ZFAS22	8
15	M10x30 SETSCREW ZP	ZFAS07	26
16	M10 WASHER ZP	ZFAS03	32
17	M10 NYLOCK NUT	ZFAS20	26
18	16mm D-SHACKLE	ZGPP12	1
19	TOP6HD CHAIN	P001.642	1
20	12mm D-SHACKLE	ZGPP13	2
21	STICKER KIT	P001.563	1

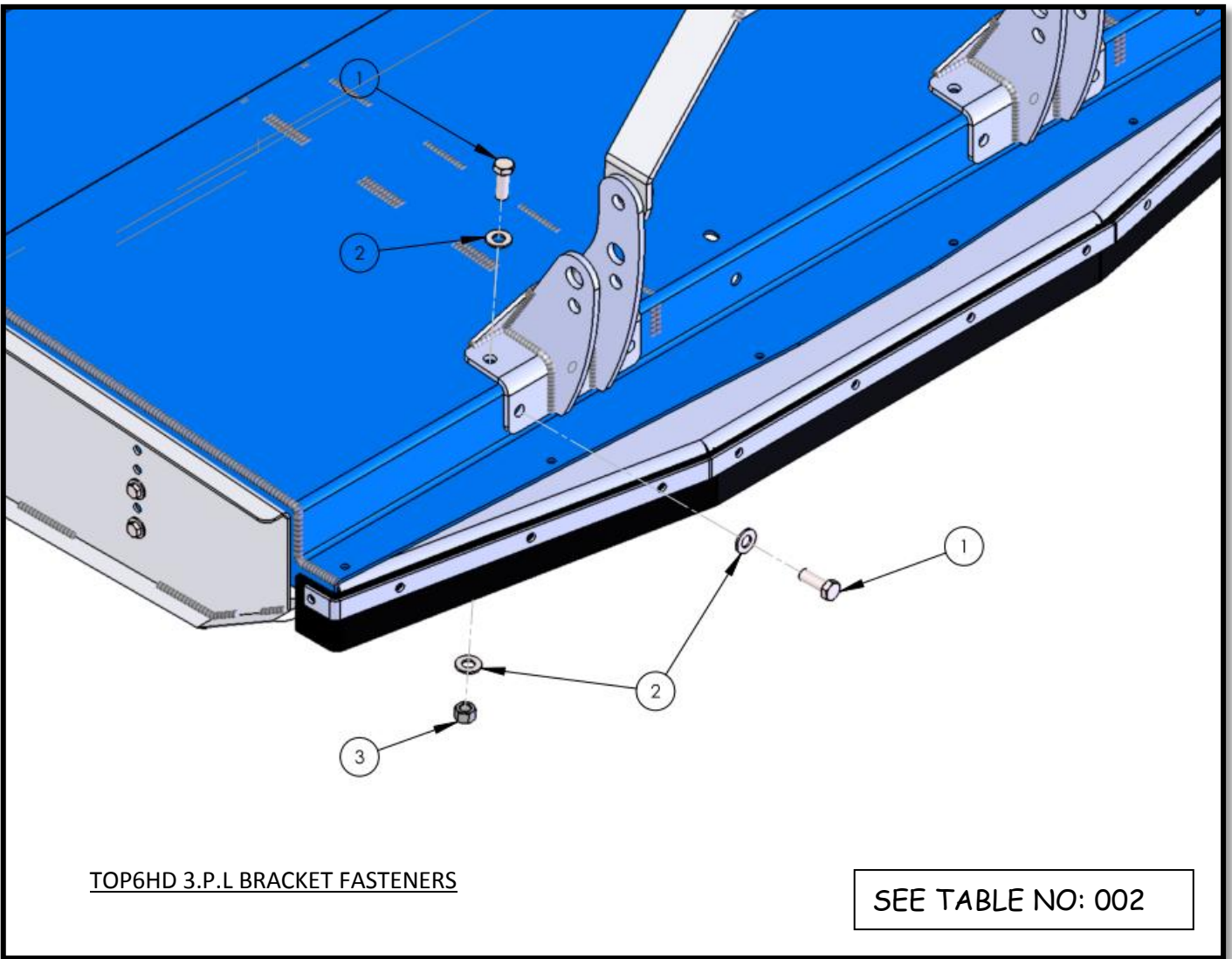
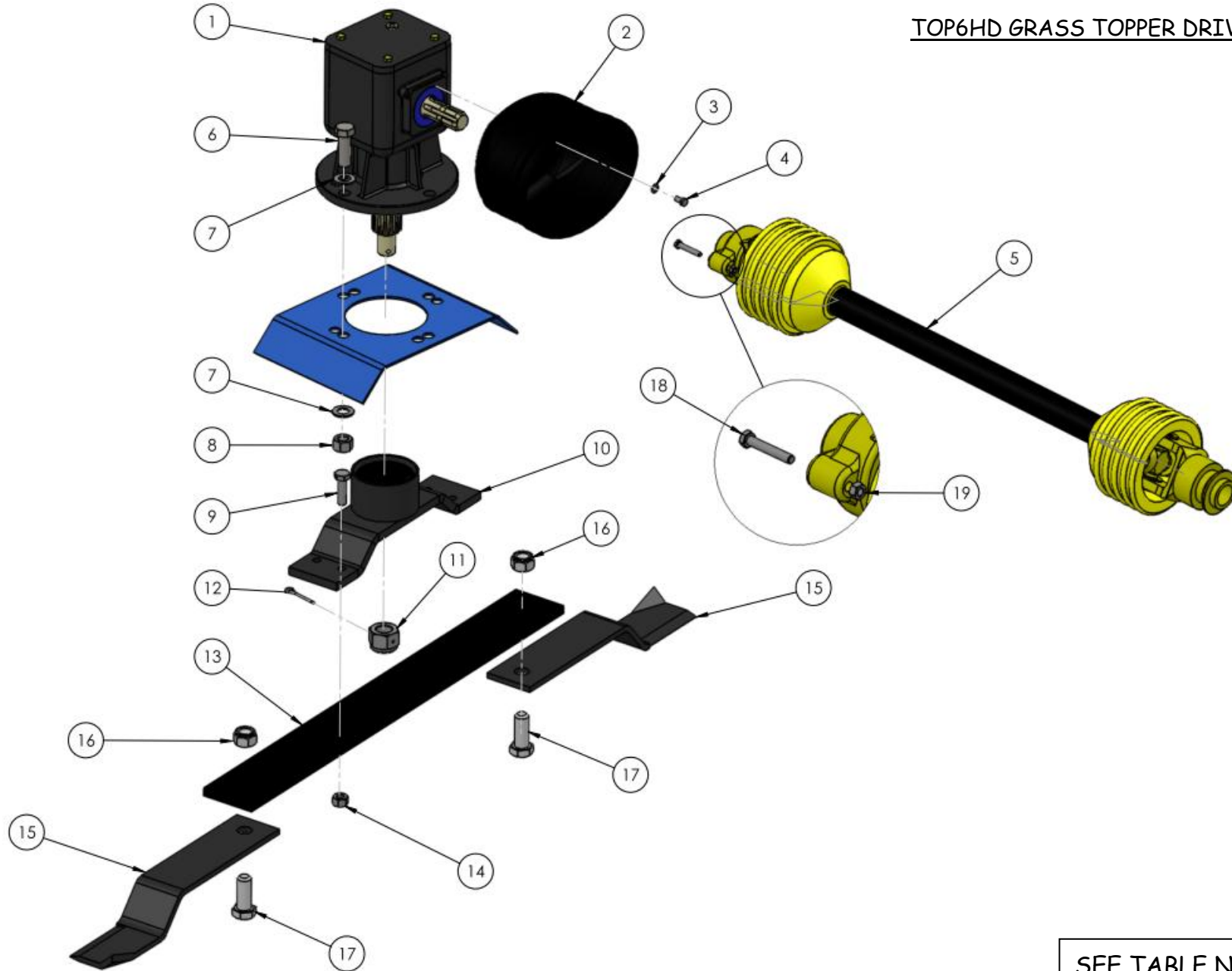


TABLE NO: 002 TOP6HD 3.P.L BRACKET FASTENERS			
ITEM NO	DESCRIPTION	TOP6HD	
		CODE	QTY
1	M16x45 SETSCREWS	ZFAS11	8
2	M16 WASHERS ZP	ZFAS36	16
3	M16 NYLOCK NUTS	ZFAS23	8

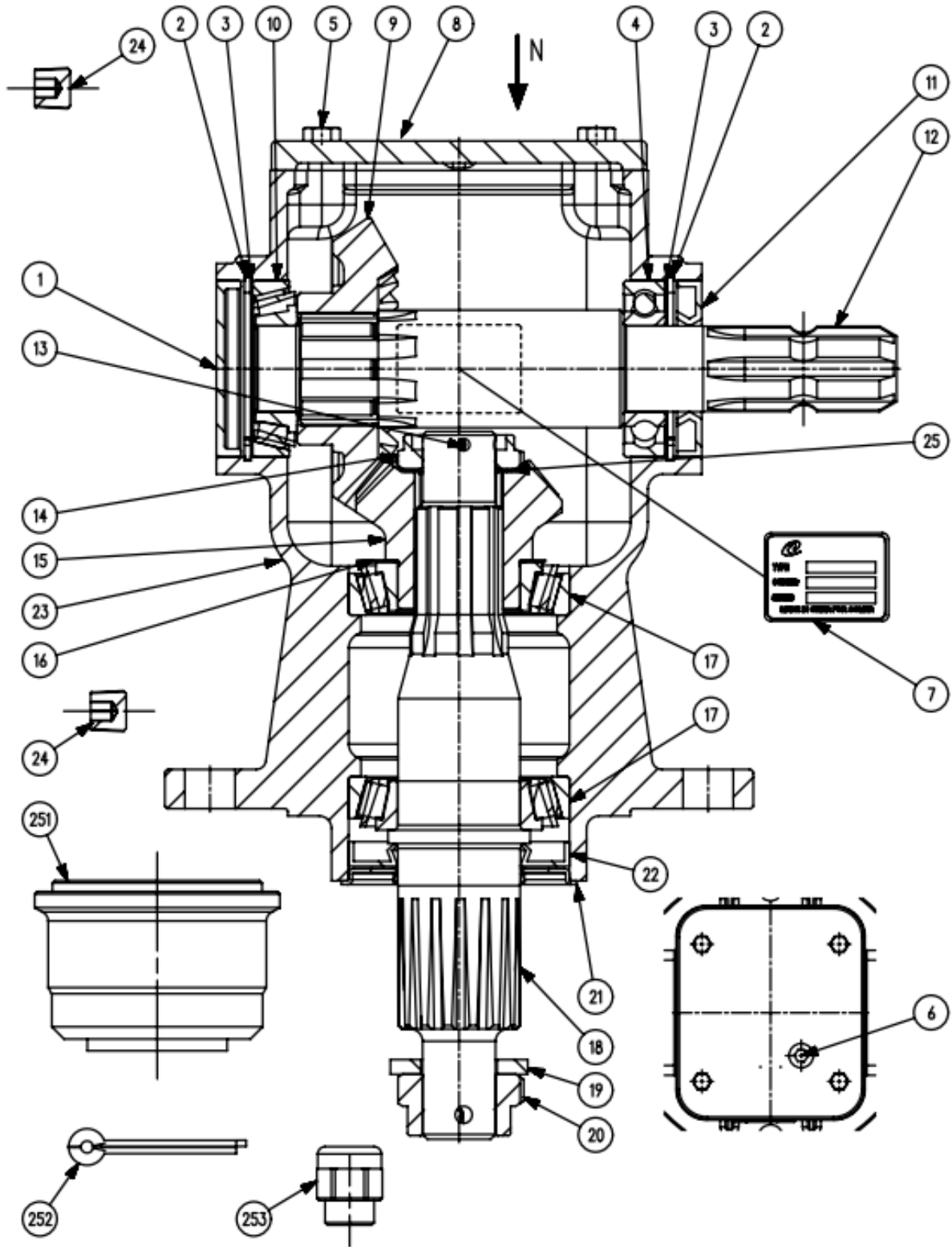
TOP6HD GRASS TOPPER DRIVE LINE



SEE TABLE NO: 003

TABLE NO: 003 TOP6HD TOPPER DRIVELINE			
ITEM NO	DESCRIPTION	TOP6HD	
		CODE	QTY
1	GEARBOX	ZGPP285	1
2	GEARBOX SAFETY COVER	ZGPP86	1
3	M8 WASHER ZP	ZFAS61	4
4	M8x16 SETSCREW ZP	ZFAS08	4
5	SLIP CLUTCH PTO SHAFT	ZGPP286	1
5	OVER RUN / SHEARBOLT PTO SHAFT	ZGPP84	1
6	¾" x 2 ½" BOLT ZP	ZFAS153	4
7	M20 WASHER ZP	ZFAS39	8
8	¾" NYLOCK NUT	ZFAS154	4
9	M14x50 BOLT ZP	ZFAS41	4
10	HEAVY DUTY ROTOR BAR HOLDER	ZGPP108	1
11	CASTLE NUT	0.140.7102.00	1
12	COTTER PIN	ZFAS140	1
13	ROTOR BAR 900mm	ZGPP64	1
14	M14 NYLOCK NUT	ZFAS42	4
15	SLASHER BLADE	ZGPP288	2
16	M24 NYLOCK NUT	ZFAS21	2
17	M24x60 SETSCREW ZP	ZFAS70	2
18	M10X50 SHEARBOLT	ZFAS14	1
19	M10 NYLOCK NUT	ZFAS20	1

TOP6HD GRASS TOPPER GEARBOX PART No. ZGPP285



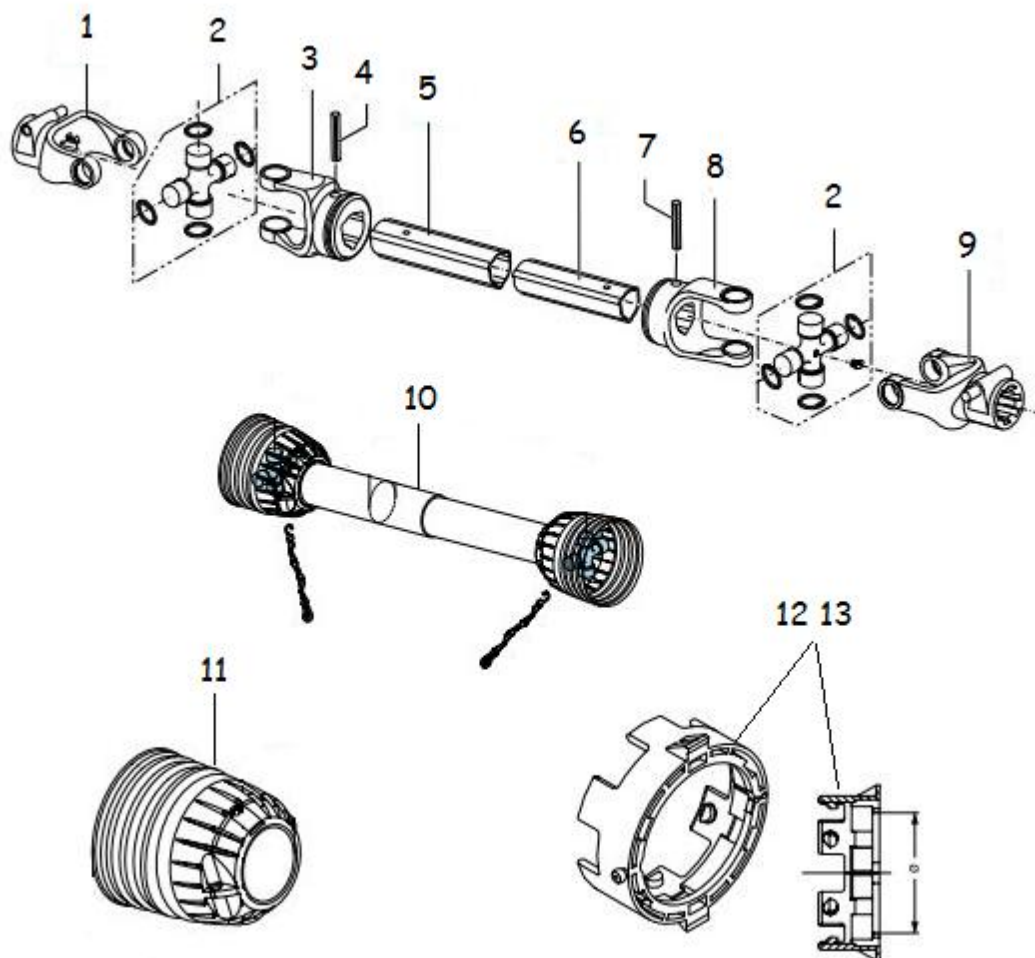
SEE TABLE NO: 004

TABLE NO: 004 TOP6HD TOPPER GEARBOX LF 9.140.810.10

ZGPP285

ITEM	PART NO.	QTY.	DESCRIPTION:
1	8.7.0.00744	1	DUST CAP
2	8.5.2.00131	2	SNAP RING 72 UNI7437
3	0.248.7500.00	2	SHIM 60.3x71.7
4	8.0.1.00870	1	BALL BEARING
5	8.1.1.00041	4	BOLT M8X22 8,8
6	8.6.6.00088	1	PLUG 1/2"GAS
7	0.124.7135.00	1	NAME PLATE
8	0.140.1302.00	1	COVER
9	0.132.6004.00	1	CROWN WHEEL Z21 M5,7
10	8.0.9.00026	1	BEARING
11	8.7.3.00055	1	OIL SEAL
12	0.140.2001.00	1	SHAFT 1"3/8 Z6
13	8.4.7.01111	1	COTTER PIN B4X55
14	0.132.7106.00	1	NUT M30X1.5
15	0.116.6204.00	1	PINION Z14 M5,7
16	0.712.7500.00	1	SHIM 70.3
17	8.0.9.00469	1	BEARING
18	0.140.3002.00	1	SHAFT
19	0.139.7101.00	1	BLANK WASHER
20	0.140.7102.00	1	NUT M30X2
21	0.139.7100.00	1	PROTECTIVE WASHER
22	8.7.1.01107	1	DIRT LIP SEAL
23	0.140.0300.00	1	CASING
24	8.6.6.00201	2	PLUG 3/8"GAS
25	0.102.7510.00	1	SHIM 44.0x30.3x1.0
251	0.139.7000.00	1	BUSH
252	8.4.7.00146	1	COTTER PIN B6X60
253	8.6.7.00269	1	OIL FILLER PLUG 1/2"GAS

TOP6HD SLIP CLUTCH PTO SHAFT PART No. ZGPP286



SEE TABLE NO: 005

TABLE NO 005: TOP6HD TOPPER SLIP CLUTCH PTO SHAFT

ZGPP286

POS.	PART NO.	PCS.	DESCRIPTION:
1	P8C-141-025-363	2	1 3/8" x 6 SPLINED YOKE
2	P8S-200-6580	2	CROSS & BEARING KIT
3	P8C-151-015-011	1	OUTER PROFILE YOKE
4	P8C-190-000-016	1	M10 x 70mm ROLL PIN
5	P9T-610-4504-000	1	INNER PROFILE TUBE 3m
6	P8S-610-5203-000	1	OUTER PROFILE TUBE 3m
7	P8C-190-000-394	1	M10 x 65mm ROLL PIN
8	P8C-151-015-012	1	INNER PROFILE YOKE
9	P8S-146-252-011	1	SLIP CLUTCH
10	P8C-142-350-015-9550	1	SAFETY COVER
11	P8C-180-036-633	1	SAFETY COVER CONE
12	P8C-180-015-391	1	(a=62.5mm) COVER BEARING
13	P8C-180-015-390	1	(a=54.5mm) COVER BEARING

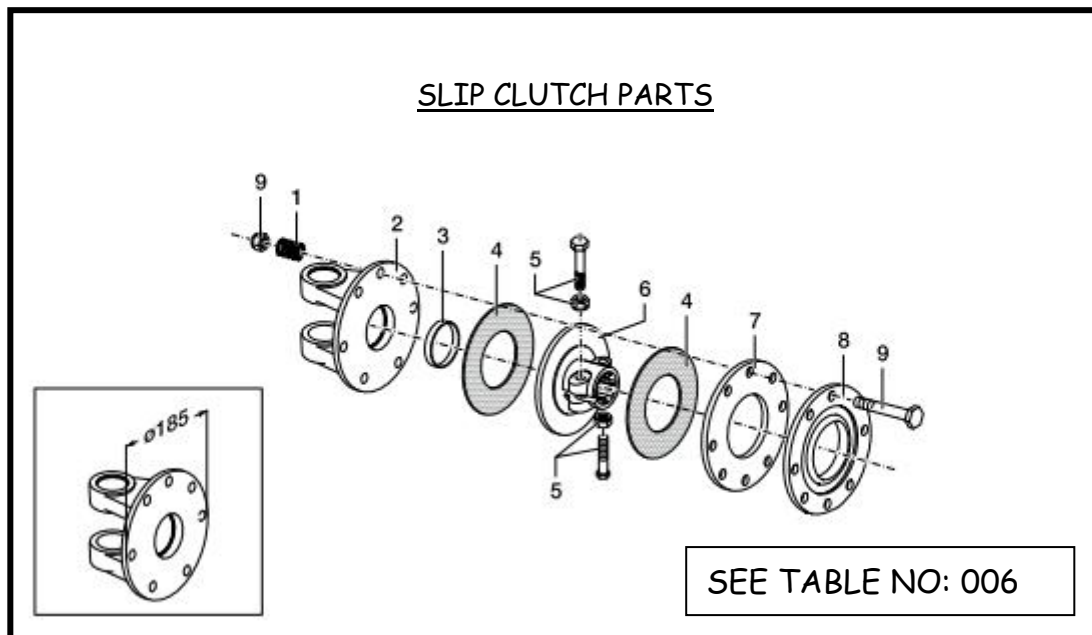
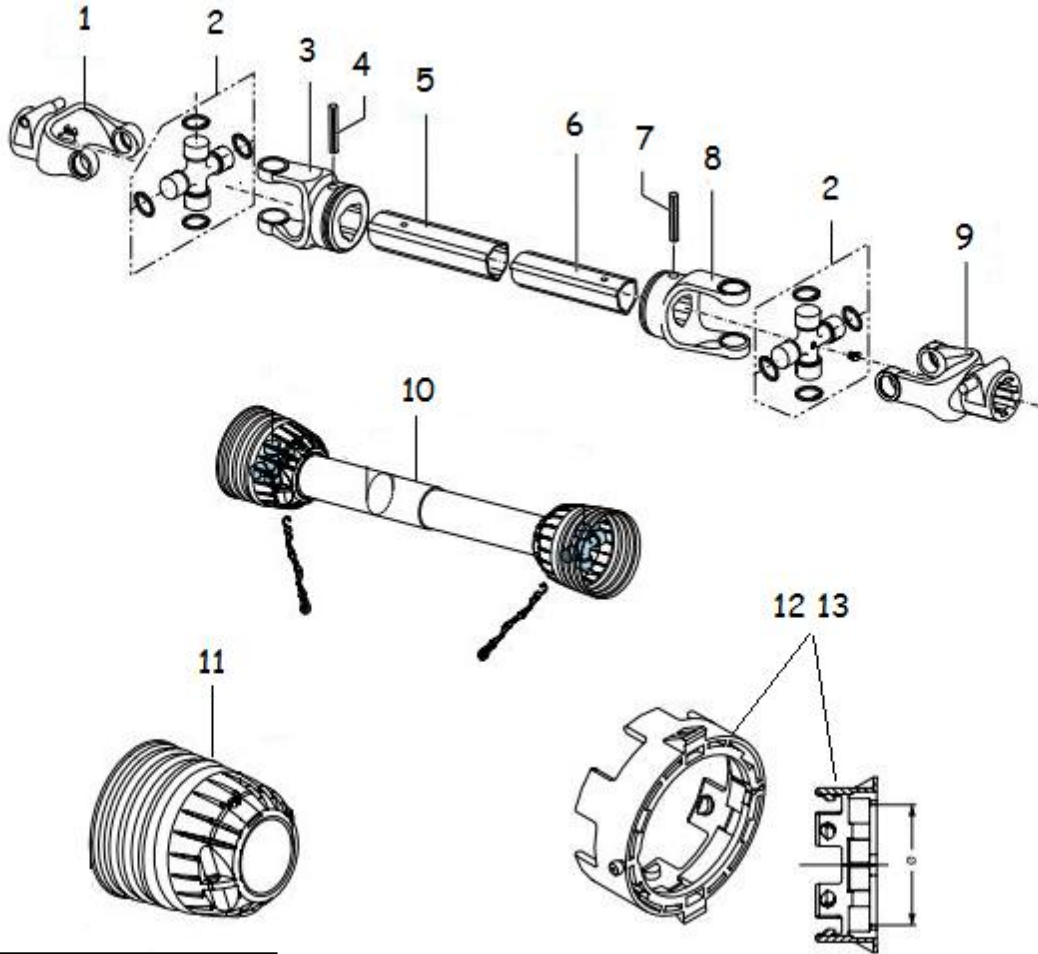


TABLE NO 006: TOP6HD TOPPER SLIP CLUTCH PTO SHAFT PARTS			
POS.	PART NO.	PCS.	DESCRIPTION:
1	180.019.017	8	SPRING
2	151.015.038	1	FLANGED YOKE
3	180.019.019	1	BUSH
4	180.019.018	2	FRICTION DISC
5	165.000.502	2	Bolt M12x1,25x65 + nut
6	151.018.018	1	Clutch support F22
7	180.019.014	1	INNER PLATE
8	180.019.116	1	PRESSURE PLATE
9	165.000.549	8	BOLT + nut

TOP6HD OVERRUN / SHEARBOLT PTO SHAFT PART No. ZGPP84



SEE TABLE NO: 007

TABLE NO 007: TOP6HD OVERRUN / SHEARBOLT PTO SHAFT

ZGPP84			
POS.	PART NO.	PCS.	DESCRIPTION:
1	P8C-141-025-363	2	1 3/8" x 6 SPLINED YOKE
2	P8S-200-6580	2	CROSS & BEARING KIT
3	P8C-151-015-011	1	OUTER PROFILE YOKE
4	P8C-190-000-016	1	M10 x 70mm ROLL PIN
5	P9T-610-4504-000	1	INNER PROFILE TUBE 3m
6	P8S-610-5203-000	1	OUTER PROFILE TUBE 3m
7	P8C-190-000-394	1	M10 x 65mm ROLL PIN
8	P8C-151-015-012	1	INNER PROFILE YOKE
9	P8S-40-16055	1	OVERRUN/ SHEARBOLT CLUTCH
10	P8C-142-350-015-9550	1	SAFETY COVER
11	P8C-180-036-633	1	SAFETY COVER CONE
12	P8C-180-015-391	1	(a=62.5mm) COVER BEARING
13	P8C-180-015-390	1	(a=54.5mm) COVER BEARING

TOP6HD OVERRUN CLUTCH PARTS

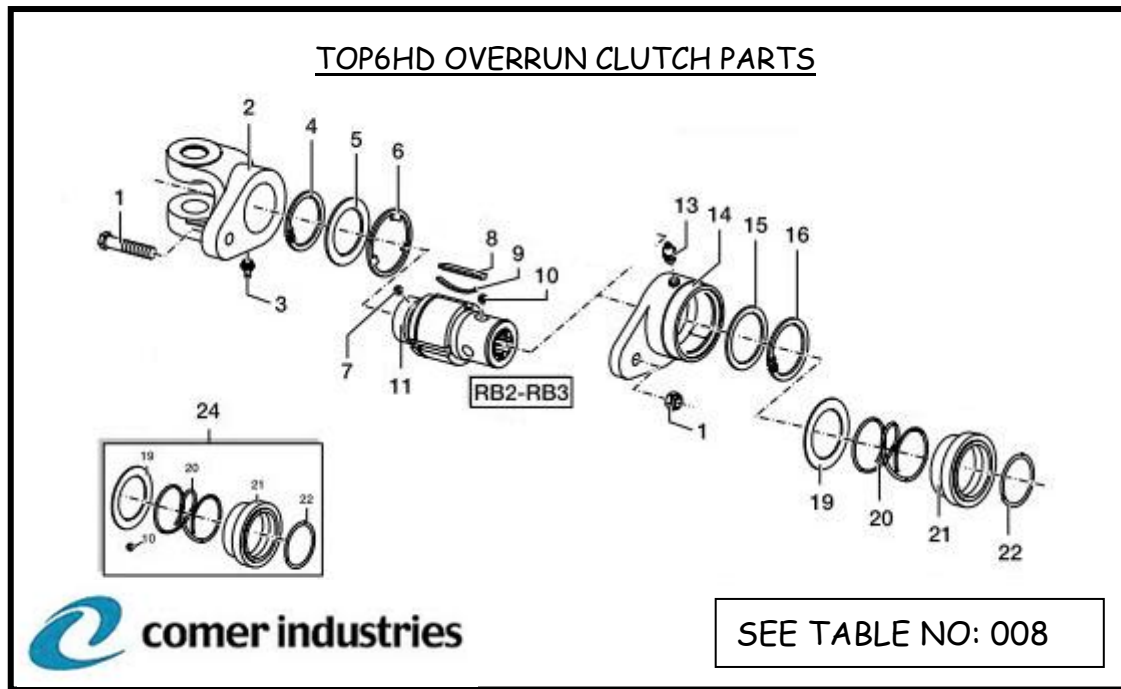


TABLE NO 008: TOP6HD TOPPER OVER RUN CLUTCH END COMPONENTS

ZGPP84			
POS.	PART NO.	PCS.	DESCRIPTION:
1	ZFAS54	1	M8x50 10.9 SHEARBOLT
1	ZFAS14	1	M10x50 8.8 SHEARBOLT
2	P8C-151-015-342	1	50 SERIES YOKE
3	P8C-190-000-020	1	M8x1 GREASE NIPPLE
4	P8C-190-000-178	1	CIRCLIP
5	P8C-190-000-435	1	RETAINING WASHER RING
6	P8C-180-014-393	1	GASKET
7	P8C-190-000-022	25	BALL BEARING
8	P8C-180-014-137	3	LEAF SPRING
9	P8C-151-014-136	3	RATCHET
10	P8C-190-000-078	3	BALL BEARING
11	P8C-151-014-432	1	6 SPLINE HUB
13	P8C-190-000-020	1	M8x1 GREASE NIPPLE
14	P8C-151-014-390	1	TORQUE LIMITER SUPPORT
15	P8C-180-014-135	1	RETAINING WASHER RING
16	P8C-190-000-183	1	CIRCLIP
19	P8C-180-015-143	1	SPRING PUSH RING
20	P8C-180-016-487	1	COLLAR SPRING
21	P8C-151-016-486	1	SLIDING SLEEVE COLLAR
22	P8C-190-000-451	1	SNAP RING
24	P8C-165-000-653	1	COLLAR COMPLETE KIT
25	P8C-165-000-726	1	OVER RUN INTERNAL KIT