

8' & 9' TRAILED TOPPER

SPARE PARTS LIST

NEW & OLD VERSION



Table of Contents:

8ft/ 9FT TRAILED TOPPER SPARE PARTS LIST

Table 001 : TRAILED TOPPER DRAW BAR ASSEMBLY

Table 001A: TRAILED TOPPER WHEEL CARRIAGE ASSEMBLY

Table 002: TRAILED TOPPER MAIN DECK ASSEMBLY

Table 002A: TRAILED TOPPER TRANSPORT LOCK MECHANISM

Table 003: TRAILED TOPPER DRIVELINE ASSEMBLY

Table 004: TRAILED TOPPER DRAWBAR COUPLING ASSEMBLY

Table 005: TRAILED TOPPER ROTOR ASSEMBLY

Table 006: TRAILED TOPPER GEARBOX PART No. ZGPP58

Table 007: TOP8T GEARBOX PART NUMBER ZGPP55

Table 008: TOP8T GEARBOX PART NUMBER ZGPP56

Table 009: TOP9T H.D GEARBOX PART NUMBER ZGPP106 / ZGPP105

Table 010: COMER (YELLOW) WIDE ANGLE PTO SHAFT PART No. ZGPP104

Table 011: ZGPP104 COMER OVER RUN CLUTCH ASSEMBLY

Table 012: COMER (YELLOW) PTO SHAFT PART No. ZGPP103

Table 013: WEASLER AGDRIVE (LEMON) PTO SHAFT PART No. ZGPP104

Table 014: WEASLER AGDRIVE (TRIANGULAR) PTO SHAFT PART No. ZGPP104

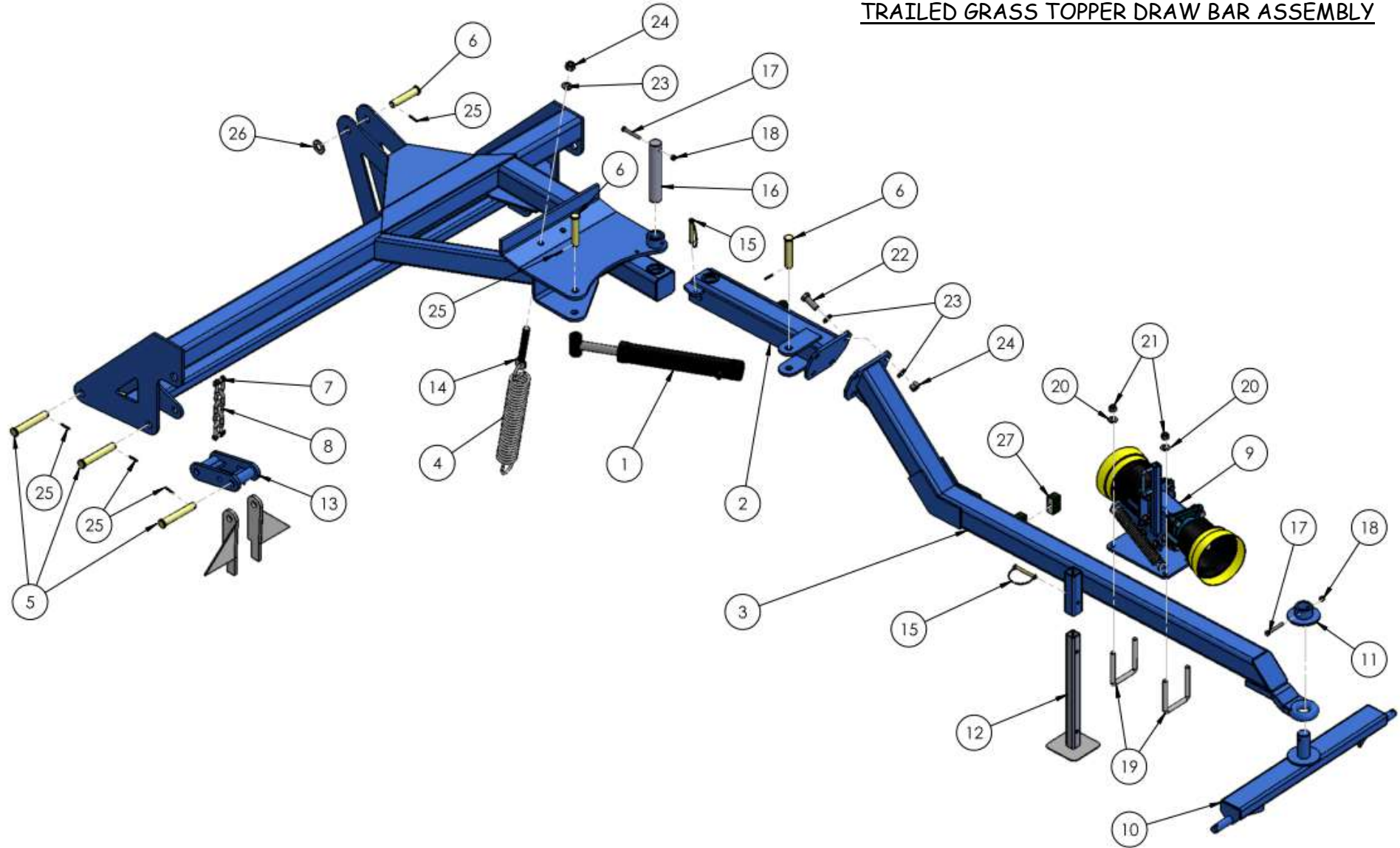
Table 015: WEASLER AGDRIVE ZGPP104 PTO OVER RUN CLUTCH ASSEMBLY

Table 016: WEASLER AGDRIVE (BLACK) PTO SHAFT PART No. ZGPP103

Table 017: TOP8T and TOP9T TVZ AXLES PART No.s ZGPP18 / ZGPP21

- A parts diagram for the old model TOP8T (Non Superfloat) is included at the back of this spare parts list.

TRAILED GRASS TOPPER DRAW BAR ASSEMBLY

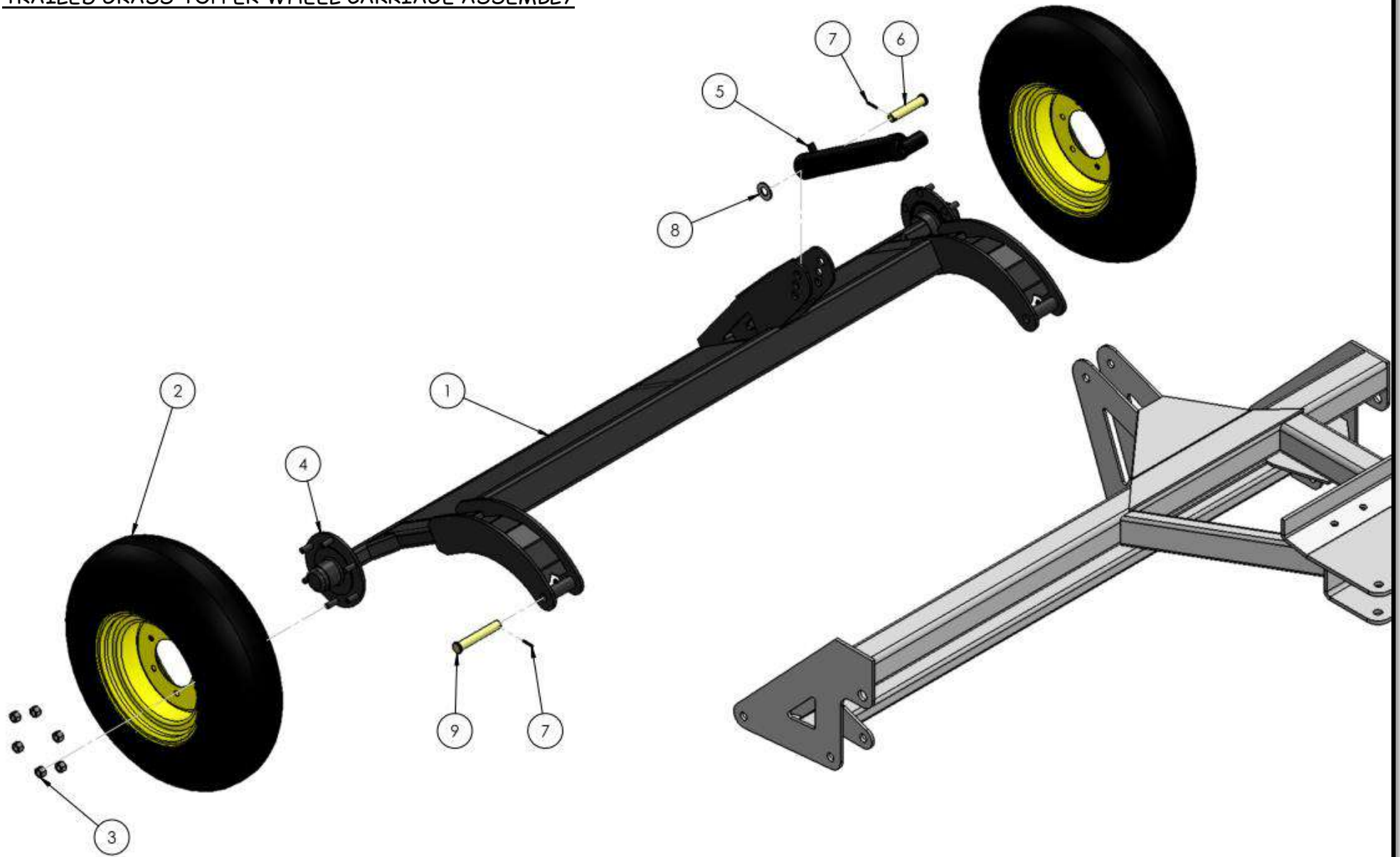


SEE TABLE NO: 001

TABLE NO: 001 TRAILED GRASS TOPPER DRAW BAR ASSEMBLY

ITEM NO	DESCRIPTION	TOP8T		TOP9T	
		CODE	QTY	CODE	QTY
1	TRANSPORT RAM C/W CHECK VALVE	ZGPP33	1	ZHYD13	1
2	DRAWBAR CONNECTOR	P001.299	1	P001.299	1
3	DRAWBAR	P001.059	1	P001.059	1
4	FLOTATION SPRING	ZSPR09	2	ZSPR09	2
5	RAM PIN	ZGPP96	6	ZGPP96	6
6	RAM PIN	ZGPP95	3	ZGPP95	3
7	16mm D-SHACKLE	ZGPP13	4	ZGPP13	4
8	DECK CHAIN	P001.300	2	P001.300	2
9	DRAWBAR COUPLING	P001.068	1	P001.068	1
10	SWIVEL DRAWBAR	P001.301	1	P001.301	1
11	SWIVEL DRAWBAR CAP	P001.302	1	P001.302	1
12	DRAWBAR STAND	P001.061	1	P001.061	1
13	CONNECTING BRACKET	P001.060	2	P001.060	2
14	SPRING TENSIONER	P001.303	2	P001.303	2
15	PIPE LINCH PIN	ZGPP94	2	ZGPP94	2
16	DRAWBAR PIVOT PIN	P001.304	1	P001.304	1
17	M10X80 BOLT ZP	ZFAS40	1	ZFAS40	1
18	M10 NYLOCK	ZFAS20	1	ZFAS20	1
19	M16 U BOLT	ZFAS75	2	ZFAS75	2
20	M16 WASHER ZP	ZFAS36	4	ZFAS36	4
21	M16 NYLOCK NUT	ZFAS23	4	ZFAS23	4
22	M20X55 HT SETSCREW	ZFAS37	4	ZFAS37	4
23	M20 WASHER	ZFAS39	10	ZFAS39	10
24	M20 NYLOCK NUT	ZFAS24	2	ZFAS24	2
25	M6 X 40 ROLL PIN	ZFAS30	9	ZFAS30	9
26	1" WASHER ZP	ZFAS49	1	ZFAS49	1
27	DOUBLE HOSE HOLDER	ZHYD14	1	ZHYD14	1

TRAILED GRASS TOPPER WHEEL CARRIAGE ASSEMBLY

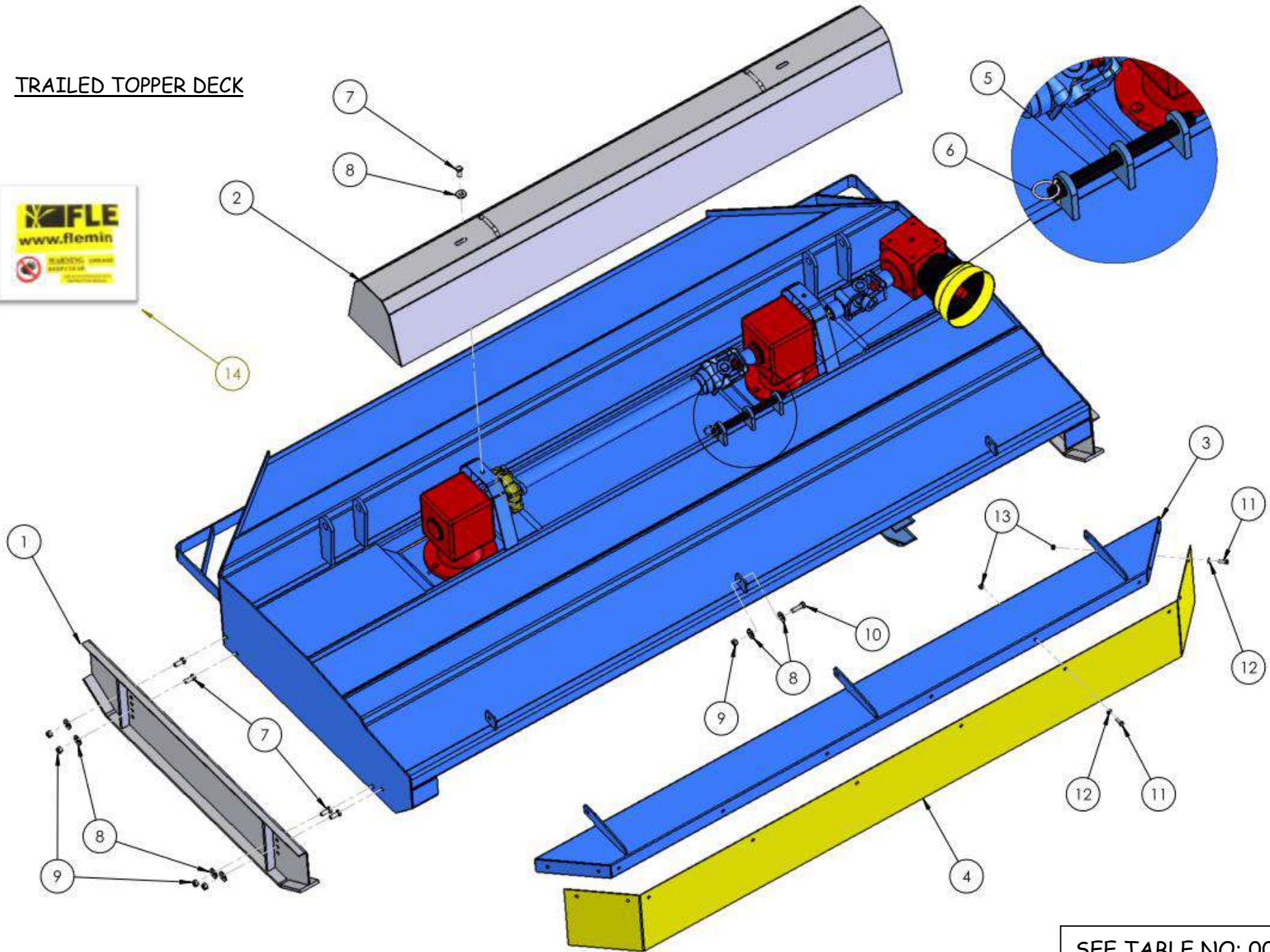


SEE TABLE NO: 001A

TABLE NO: 001A TRAILED GRASS TOPPER WHEEL CARRIAGE ASSEMBLY

ITEM NO	DESCRIPTION	TOP8T		TOP9T	
		CODE	QTY	CODE	QTY
1	WHEEL CARRIAGE	P001.305	1	P001.306	1
2	10x75x15.3 SIX STUD WHEEL	ZGPP68	2	ZGPP68	2
3	18mm x 1.5mm WHEEL NUT	AX-181.5	12	AX-181.5	12
4	AXLE	ZGPP18	1	ZGPP21	1
5	HYDRAULIC RAM	ZHYD10	1	ZHYD10	1
6	RAM PIN	ZGPP95	1	ZGPP95	1
7	M6 X 40 ROLL PIN	ZFAS30	3	ZFAS30	3
8	1" WASHER ZP	ZFAS49	1	ZFAS49	1
9	RAM PIN	ZGPP96	2	ZGPP96	2

TRAILED TOPPER DECK

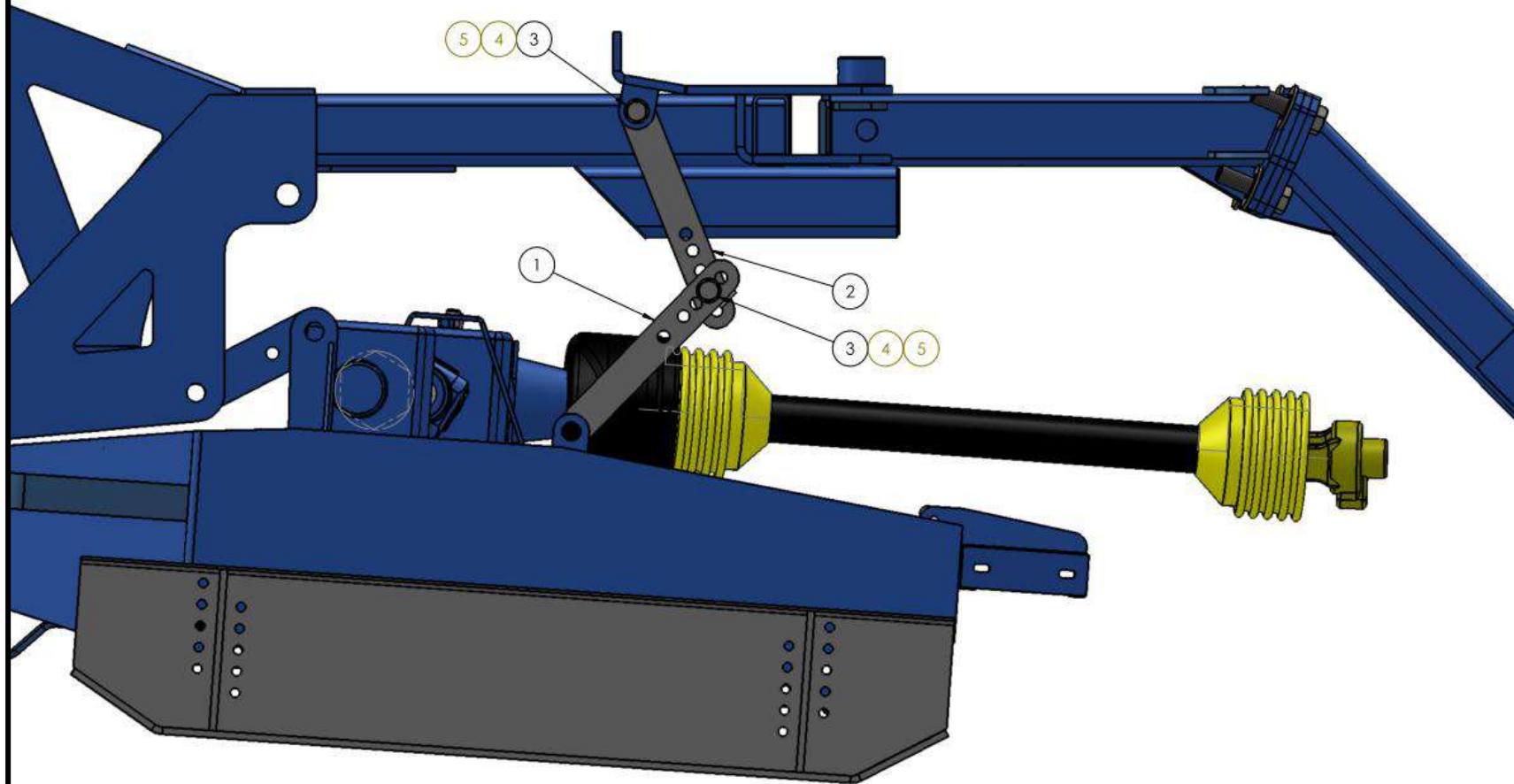


SEE TABLE NO: 002

TABLE NO: 002 TRAILED GRASS TOPPER DECK ASSEMBLY

ITEM NO	DESCRIPTION	TOP8T		TOP9T	
		CODE	QTY	CODE	QTY
1	TRAILED TOPPER SKID	P001.062	2	P001.063	2
2	GEARBOX COVER	P001.066	1	P001.067	1
3	CURTAIN GUARD FRAME	P001.065	1	P001.064	1
4	CURTAIN GUARD	ZGPP115	1	ZGPP115	1
5	SPRING RETAINING PIN	P001.307	1	P001.307	1
6	M6X40 LINCH PIN	ZFAS34	1	ZFAS34	1
7	M12X30 SETSCREW	ZFAS10	6	ZFAS10	6
8	M12 WASHER ZP	ZFAS45	16	ZFAS45	16
9	M12 NYLOCK NUT	ZFAS22	11	ZFAS22	11
10	M12X40 SETSCREW	ZFAS51	3	ZFAS51	3
11	M8X25 SETSCREW	ZFAS89	9	ZFAS89	10
12	M8 WASHER	ZFAS61	18	ZFAS61	20
13	M8 NYLOCK NUT	ZFAS55	9	ZFAS55	10
14	STICKER KIT	P001.538	1	P001.538	1

TRAILED TOPPER TRANSPORT LOCK MECHANISM

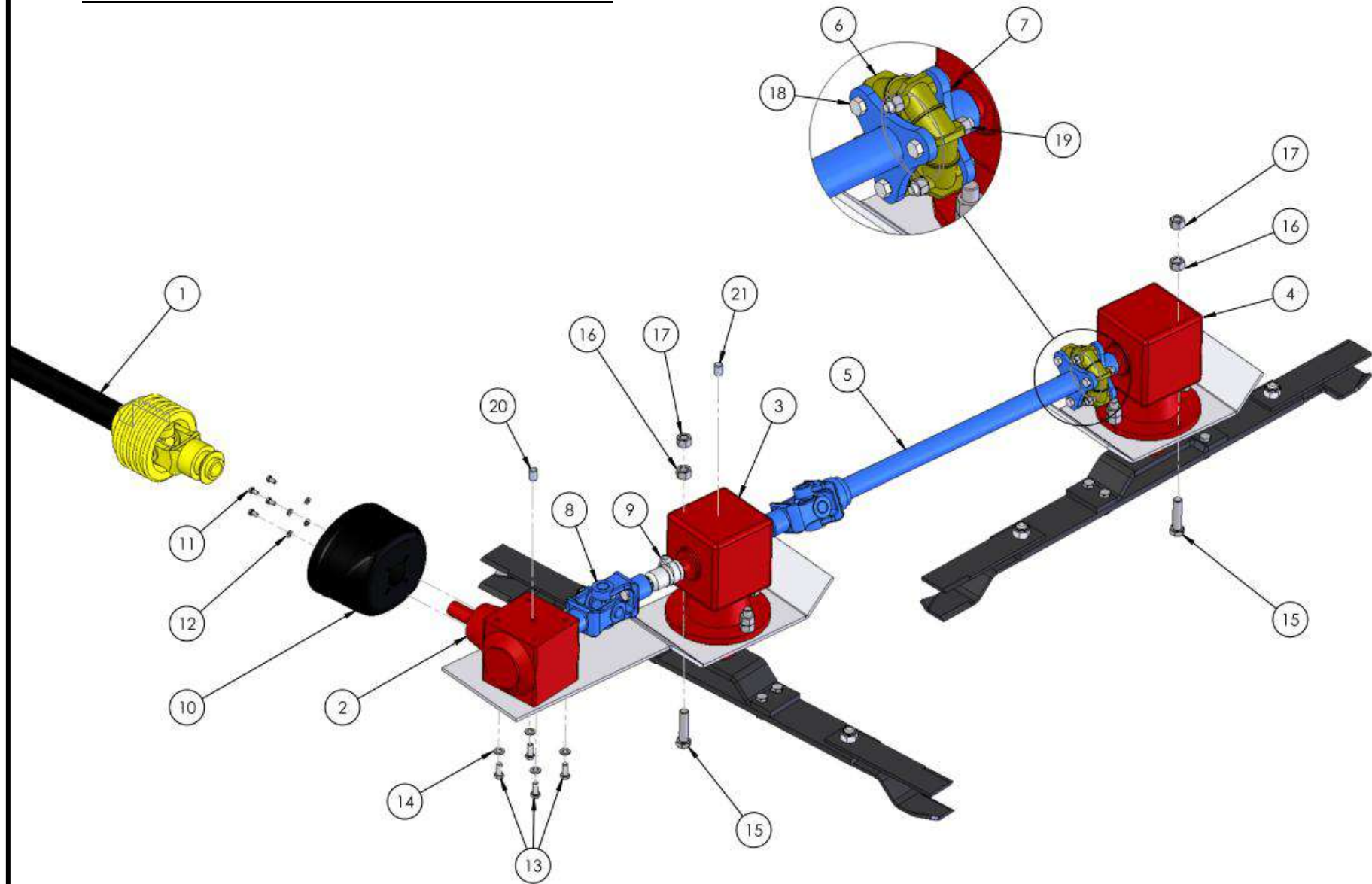


SEE TABLE NO: 002A

TABLE NO: 002A TRAILED GRASS TOPPER TRANSPORT LOCK MECHANISM

ITEM NO	DESCRIPTION	TOP8T		TOP9T	
		CODE	QTY	CODE	QTY
1	BOTTOM TIE BAR	P001.308	1	P001.308	1
2	TOP TIE BAR	P001.309	1	P001.309	1
3	M16X45 SETSCREW ZP	ZFAS11	2	ZFAS11	2
4	M16 WASHER ZP	ZFAS36	4	ZFAS36	4
5	M16 NYLOCK NUT	ZFAS23	2	ZFAS23	2

TRAILED GRASS TOPPER DRIVELINE ASSEMBLY

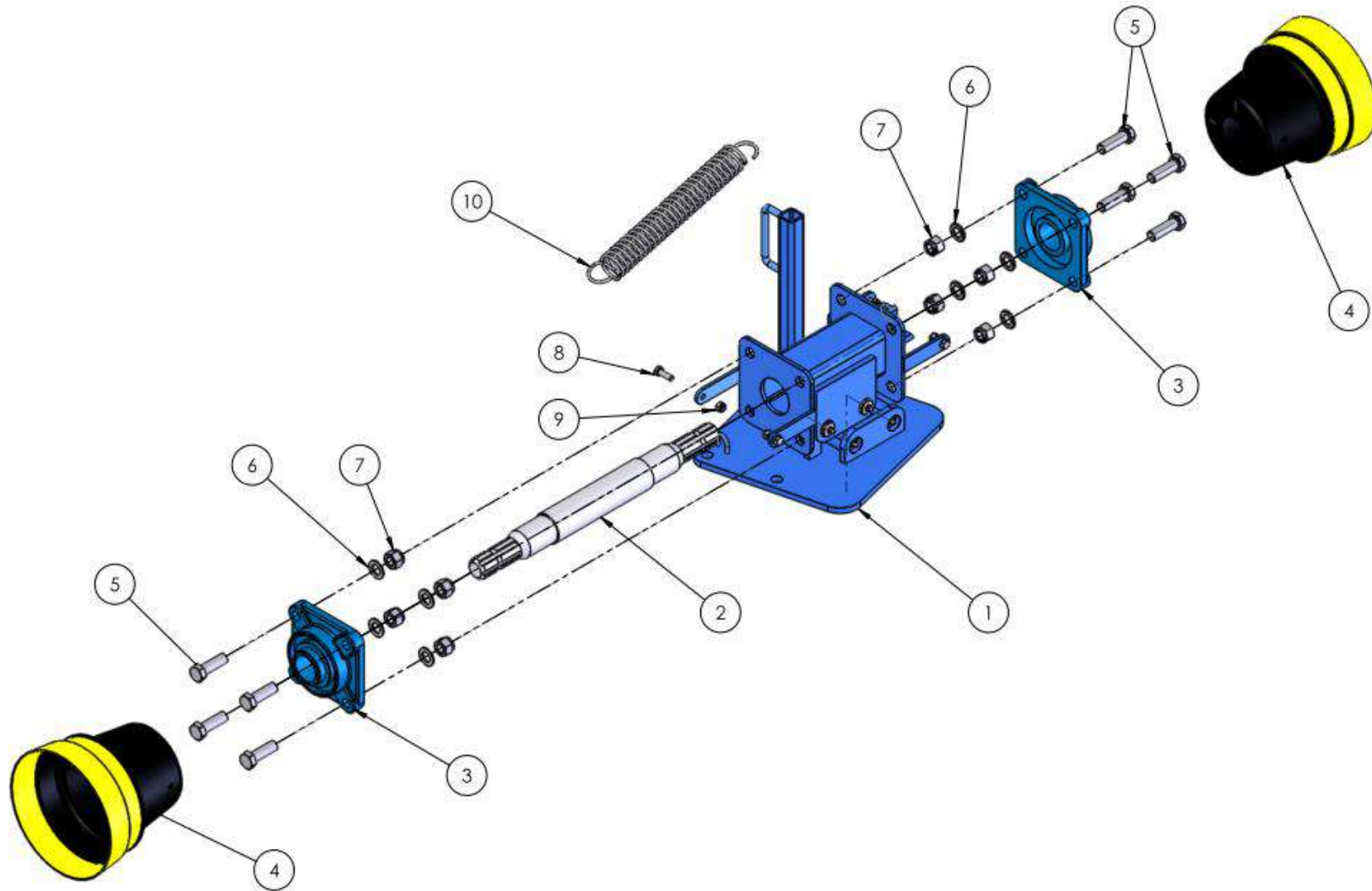


SEE TABLE NO: 003

TABLE NO: 003 TRAILED GRASS TOPPER DRIVELINE ASSEMBLY

ITEM NO	DESCRIPTION	TOP8T		TOP9T	
		CODE	QTY	CODE	QTY
1	LONG PTO SHAFT	ZGPP103	1	ZGPP103	1
2	HEAVY DUTY CORNER "L" GEARBOX	ZGPP58	1	ZGPP58	1
3	"T" GEARBOX	ZGPP55	1		
3	HEAVY DUTY "T" GEARBOX			ZGPP106	1
4	"L" GEARBOX	ZGPP56	1		
4	HEAVY DUTY "L" GEARBOX			ZGPP105	1
5	CONNECTING SHAFT	ZGPP117	1		
5	CONNECTING SHAFT C/W UNI JOINT END			ZGPP111	1
6	RUBBER COUPLING	ZGPP82	1	ZGPP82	1
7	TOPPER DRIVE COUPLING	ZGPP116	1	ZGPP116	1
7	M12X30 SETSCREW	ZFAS10	6	ZFAS10	6
8	UNIVERSAL JOINT	ZGPP110	1		
8	DOUBLE UNIVERSAL JOINT			ZGPP165	1
9	DRIVE EXTENSION (Used on old model TOP9T)			ZGPP109	1
10	OVAL GEARBOX COVER	ZGPP86	1	ZGPP86	1
11	M8X16 SETSCREW ZP	ZFAS08	4	ZFAS08	4
12	M8 WASHERS ZP	ZFAS61	4	ZFAS61	4
13	M12X30 SETSCREW	ZFAS10	4	ZFAS10	4
14	M12 SPRING WASHER	ZFAS76	4	ZFAS76	4
15	M16X55 SETSCREW	ZFAS62	8		
15	M20X70 BOLT ZP			ZFAS108	8
16	M16 PLAIN NUT ZP	ZFAS63	8		
16	M20 PLAIN NUT ZP			ZFAS74	8
17	M16 NYLOCK NUT	ZFAS23	8		
17	M20 NYLOCK NUT ZP			ZFAS24	8
18	M12X80 BOLT ZP	ZFAS47	6	ZFAS47	6
19	M12 NYLOCK NUT ZP	ZFAS22	6	ZFAS22	6
20	3/8" BREATHER PLUG	ZGPP24	1	ZGPP24	1
21	BREATHER PLUG ("T" and "L" Gearbox)	ZGPP24	2	ZGPP173	2

TRAILED GRASS TOPPER DRAWBAR COUPLER ASSEMBLY



SEE TABLE NO: 004

TABLE NO: 004 TRAILED GRASS TOPPER DRAWBAR COUPLER ASSEMBLY

ITEM NO	DESCRIPTION	TOP8T		TOP9T	
		CODE	QTY	CODE	QTY
1	DRAWBAR COUPLER FRAME	P001.310	1	P001.310	1
2	DRIVESHAFT	ZMAC15A	1	ZMAC15A	1
3	BEARING	ZGPP48	2	ZGPP48	2
4	PTO GUARD	ZGPP03	2	ZGPP03	2
5	M16X45 SETSCREW	ZFAS11	8	ZFAS11	8
6	M16 WASHER ZP	ZFAS36	8	ZFAS36	8
7	M16 NYLOCK NUT	ZFAS23	8	ZFAS23	8
8	M8X25 SETSCREW	ZFAS89	4	ZFAS89	4
9	M8 NYLOCK NUT	ZFAS55	4	ZFAS55	4
10	SPRING	ZSPR07	1	ZSPR07	1

TRAILED TOPPER ROTOR ASSEMBLY

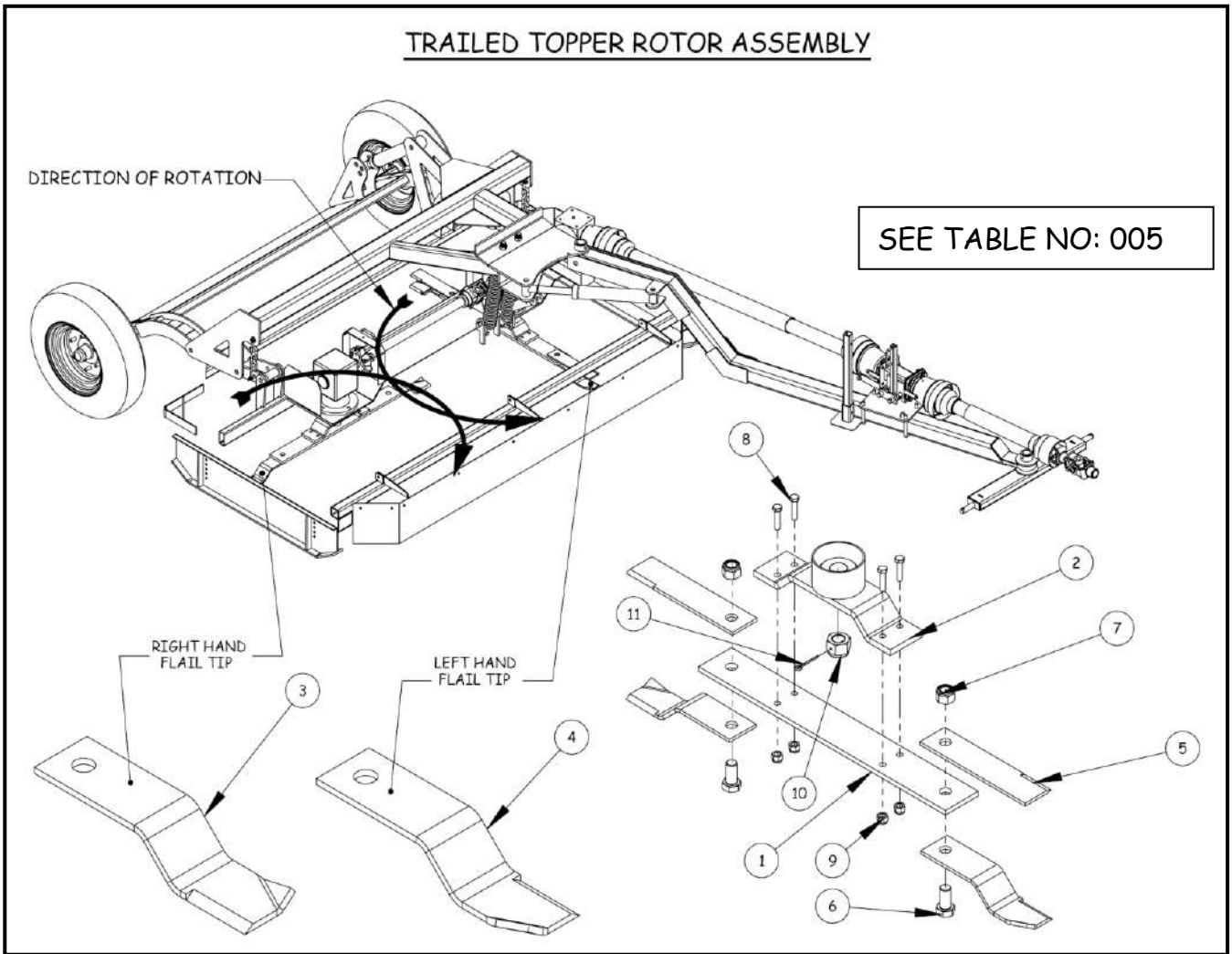


TABLE NO: 005 TRAILED TOPPER ROTOR ASSEMBLY

ITEM NO	DESCRIPTION	8FT TRAILED TOPPER		9FT TRAILED TOPPER	
		CODE	QTY	CODE	QTY
1	750mm ROTOR BAR	ZGPP89	2		
1	900mm ROTOR BAR			ZGPP64	2
2	ROTAR BAR HOLDER	ZGPP65	2	ZGPP108	2
3	TOPPER BLADE RIGHT HAND	ZGPP07	2	ZGPP07	2
4	TOPPER BLADE LEFT HAND	ZGPP85	2	ZGPP85	2
5	TOPPER BLADE STRAIGHT			ZGPP107	4
6	M24 X50 BOLT	ZFAS09	4		
6	M24x60 BOLT (USE WHEN FITTING STRAIGHT BLADE)			ZFAS70	4
7	M24 NYLOCK	ZFAS21	4	ZFAS21	4
8	M14x50 BOLT	ZFAS41	8	ZFAS41	8
9	M14 NYLOCK	ZFAS42	8	ZFAS42	8
10	TOPPER CASTLE NUT	8.2.2.00515	2	0.140.7102.00	2
11	2" x 3/16" COTTER PIN	ZFAS58	2	ZFAS58	2

8/9ft TRAILED TOPPER GEARBOX PART No ZGPP58

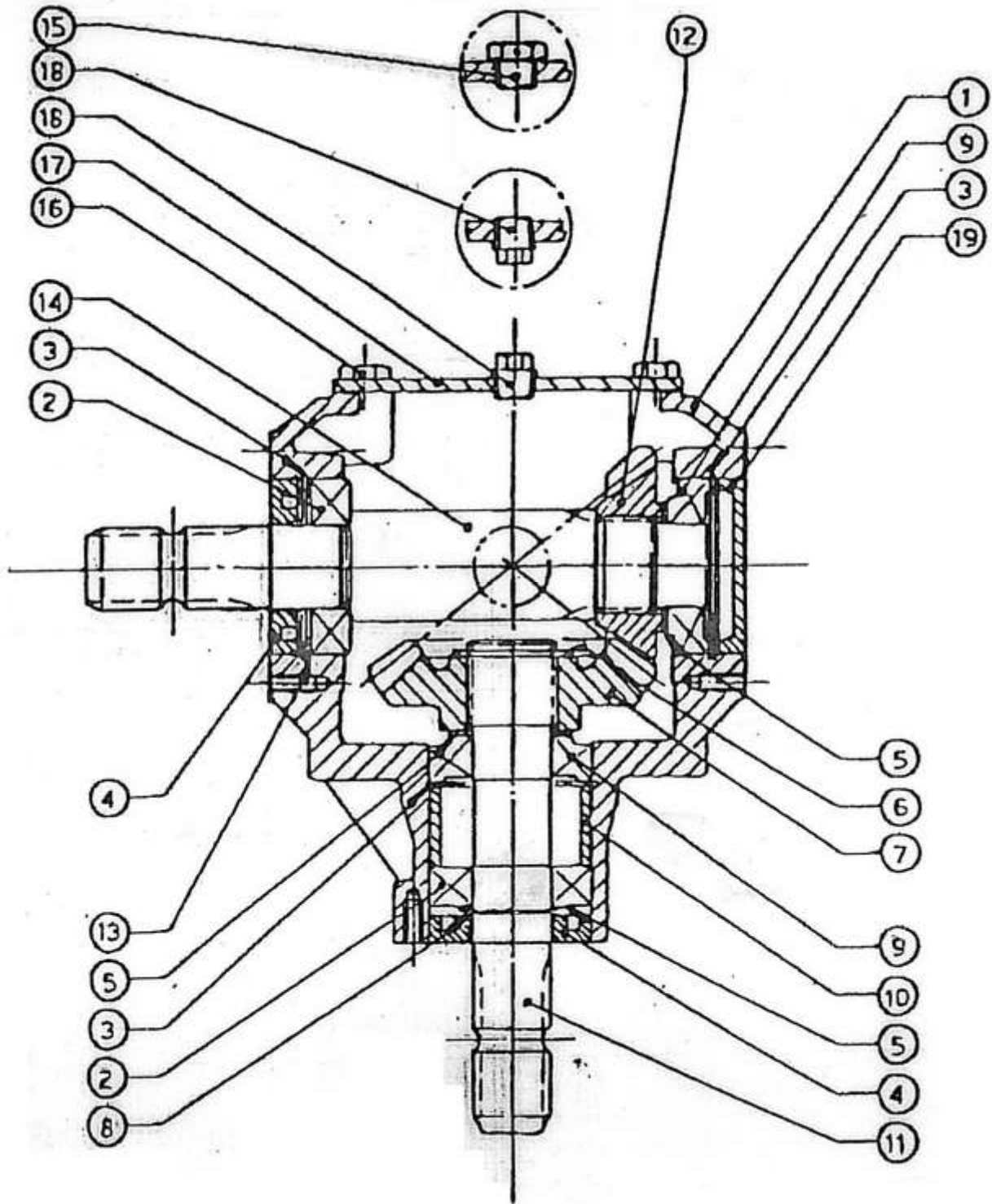


TABLE NO: 006 8/9ft TRAILED TOPPER GEARBOX T27/A 9.267.045.00**ZGPP58**

POS.	PART NO.	PCS.	DESCRIPTION:
1	0.267.0300.00	1	CASING
2	8.0.1.00025	2	BEARING
3	8.5.2.00131	3	SNAP RING 72 UNI7437
4	8.7.1.00152	2	DOUBLE LIP SEAL
5	0.259.7500.00	3	SHIM 48.0
6	8.5.1.00029	1	SNAP RING 40 UNI7435
7	0.268.6001.00	1	GEAR Z23 M5.4
8	8.5.1.0005	1	SNAP RING 35 UNI7435
9	8.0.9.00026	2	BALL BEARING
10	0.267.7100.00	1	SPACER
11	0.267.2001.00	1	SHAFT 1 3/8"
12	0.268.5001.00	1	PINION Z17 M5.4
13	0.248.7500.00	1	SHIM 71.7
14	0.267.3010.00	1	SHAFT 1 3/8"
15	0.107.7100.01	1	OIL FILLER PLUG
16	8.1.1.00054	4	BOLT M10X20 8.8
17	0.267.1302.00	1	COVER
18	ZGPP24	2	PLUG 3/8" GAS
19	8.7.0.00744	1	OIL CAP

8ft TRAILED TOPPER GEARBOX PART No. ZGPP55

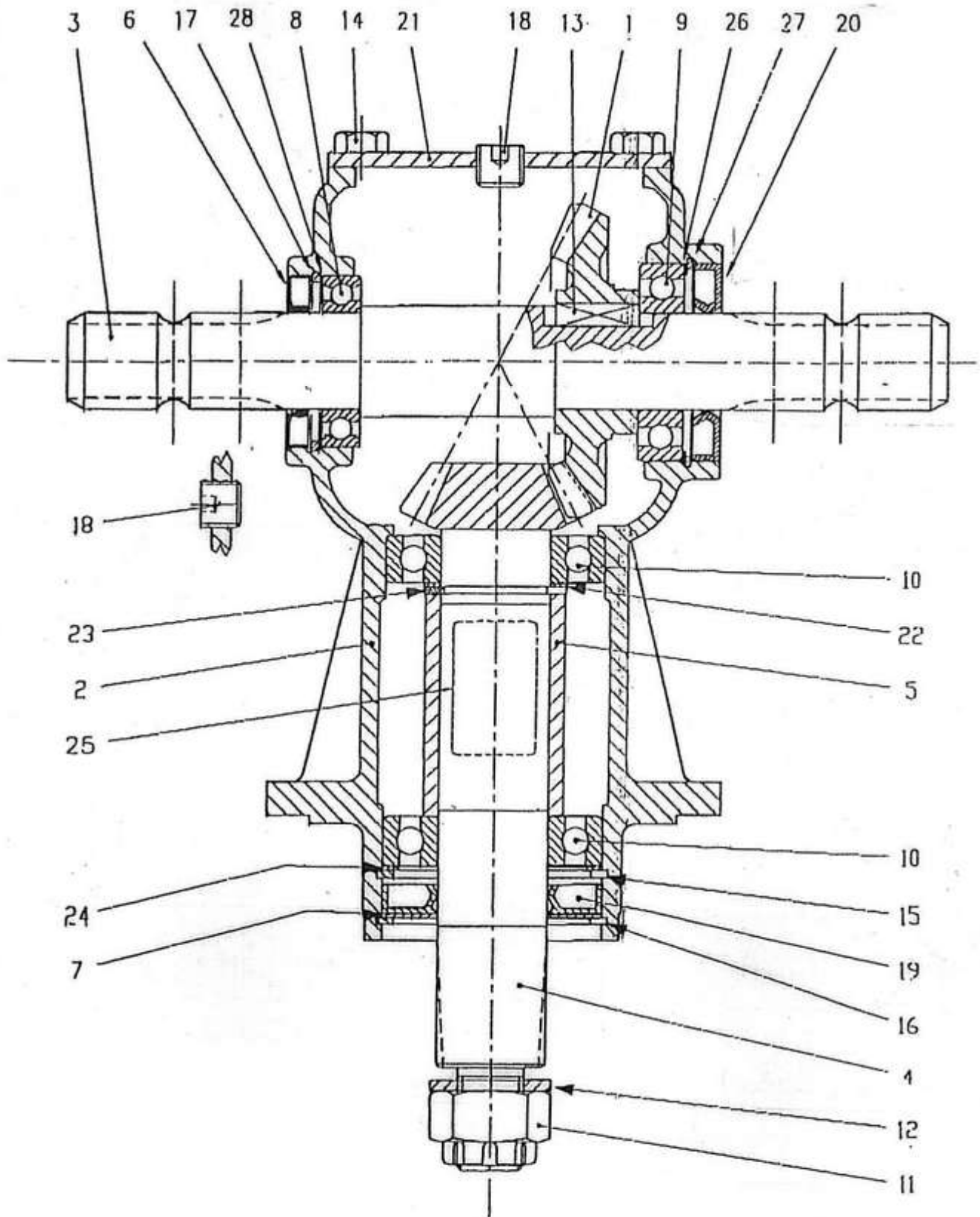


TABLE NO: 007 8ft TRAILED TOPPER GEARBOX LF 9.205.809.00**ZGPP55**

POS.	PART NO.	PCS.	DESCRIPTION:
1	0.131.5000.00	1	CROWN GEAR Z23 M5
2	0.205.0301.00	1	CASING
3	0.135.2002.00	1	INPUT SHAFT 1 3/8" Z6
4	0.135.6008.00	1	PINION Z12 M5
5	0.135.7105.00	1	SPACER
6	8.7.3.01259	1	OIL SEAL
7	1.135.7100.00	1	PROTECTIVE WASHER
8	8.0.1.00000	1	BALL BEARING
9	8.0.1.00870	1	BALL BEARING
10	8.0.1.00871	2	BALL BEARING
11	8.2.2.01144	1	CASTLE NUT M24X2 PR80B
12	8.3.2.00409	1	BOLT WASHER 25X44X4
13	8.4.1.00993	1	PARALLEL KEY B
14	8.1.1.00054	4	BOLTS M10X20 HHB (8.8)
15	8.5.2.00030	1	SNAP RING (80X83.5X2.5)
16	8.5.3.00955	1	SNAP RING SB 81
17	8.5.2.00648	1	SNAP RING (52X55X2.5)
18	8.6.6.00201	2	3/8" GAS SOLID PLUG
19	8.7.1.00748	1	DUST LIP SEAL
20	8.7.3.00055	1	OIL SEAL
21	0.205.1300.00	1	COVER
22	0.244.7500.00	2	SHIM KIT (40.3X51.5)
23	8.5.1.00680	1	SNAP RING (40X37.5X2.5)
24	0.267.7500.00	1	SHIM KIT (69X79.7)
25	0.124.7135.00	1	NAME PLATE
26	0.248.7500.00	1	SHIM KIT (60.3X71.7)
27	8.5.2.00131	1	SNAP RING (72X75X2.5)
28	0.113.7500.00	1	SHIM KIT (55.4X617)

8ft TRAILEDTOPPER GEARBOX PART No. ZGPP56

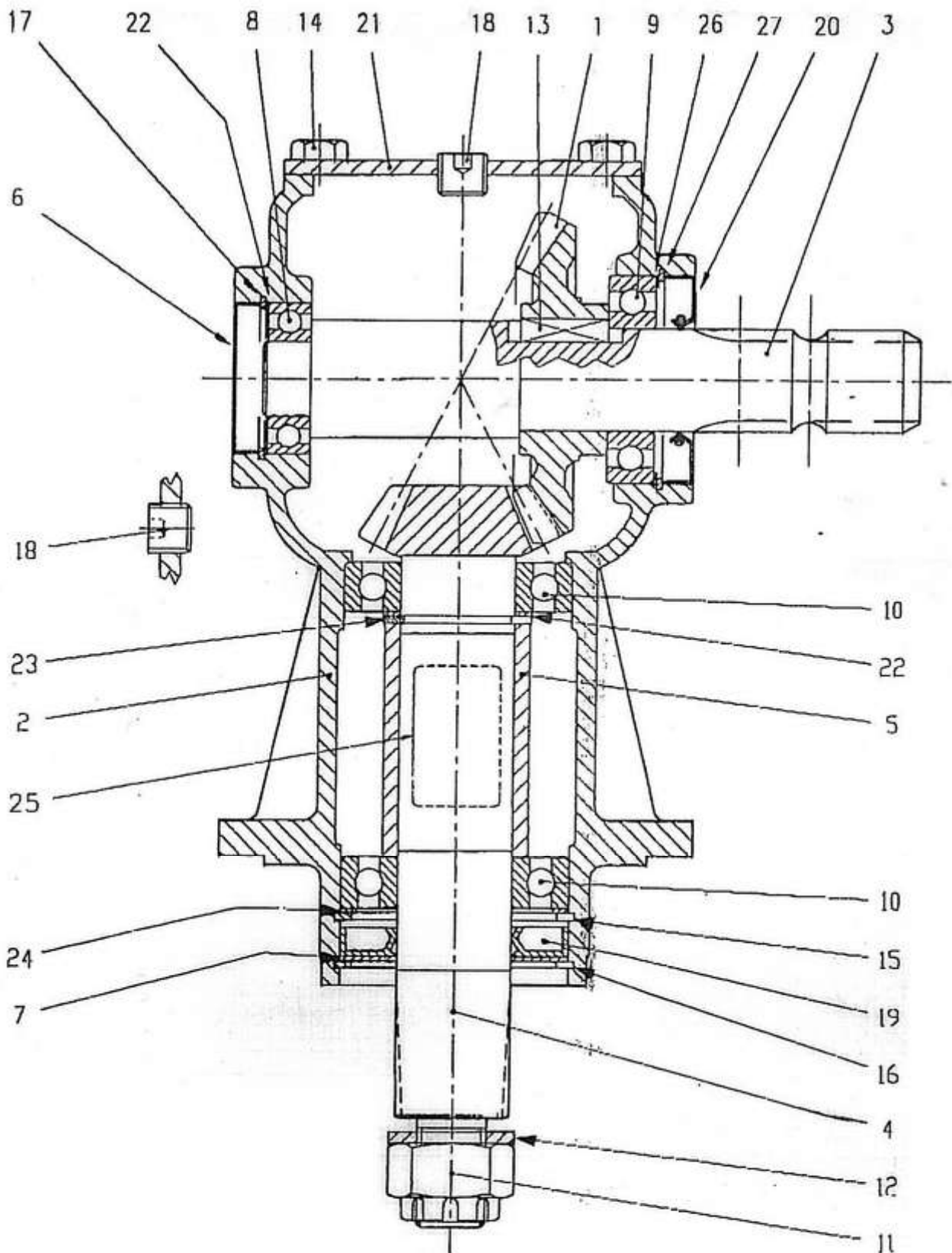
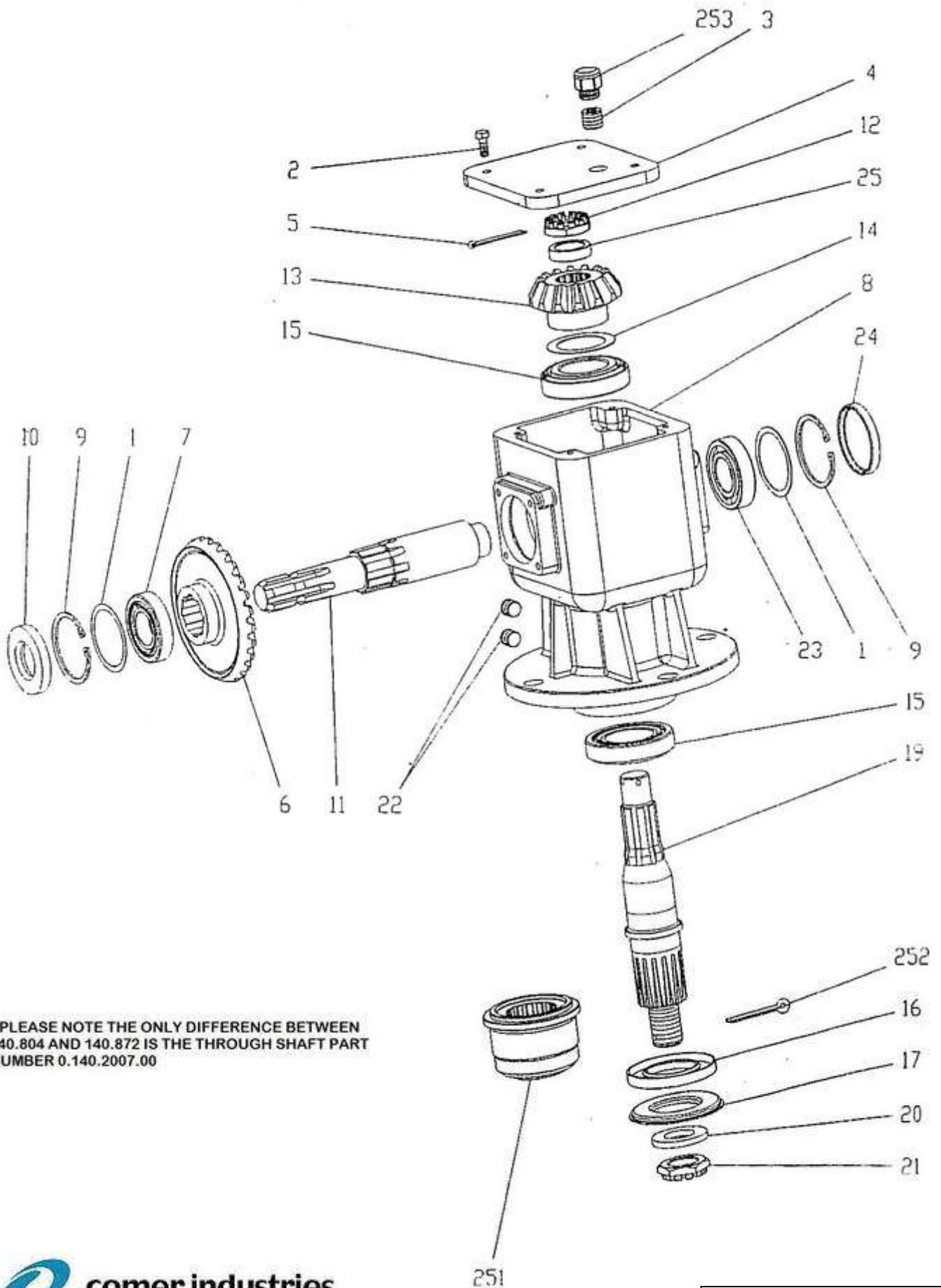


TABLE NO: 008 COMER L GEARBOX LF 9.205.805.00**ZGPP56**

POS.	PART NO.	PCS.	DESCRIPTION:
1	0.135.5000.00	1	CROWN GEAR Z23 M5
2	0.205.0300.00	1	CASING
3	0.135.2001.00	1	INPUT SHAFT 1 3/8" Z6
4	0.135.6008.00	1	PINION Z12 M5
5	0.135.7105.00	1	SPACER
6	8.7.0.00693	1	OIL CAP
7	1.135.7100.00	1	PROTECTIVE WASHER
8	8.0.1.00034	1	BALL BEARING
9	8.0.1.00870	1	BALL BEARING
10	8.0.1.00871	2	BALL BEARING
11	8.2.2.00515	1	CASTLE NUT M24X2 PR80B
12	8.3.2.00409	1	BOLT WASHER 25X44X4
13	8.4.1.00993	1	PARALLEL KEY B
14	8.1.1.00054	4	BOLTS M10X20 HHB (8.8)
15	8.5.2.00030	1	SNAP RING (80X83.5X2.5)
16	8.5.3.00955	1	SNAP RING SB 81
17	8.5.2.01358	1	SNAP RING (52X55X2.5)
18	8.6.6.00201	2	3/8" GAS SOLID PLUG
19	8.7.1.00748	1	DUST LIP SEAL
20	8.7.3.00055	1	OIL SEAL
21	0.205.1300.00	1	COVER
22	0.244.7500.00	2	SHIM KIT (40.3X51.5)
23	8.5.1.00680	1	SNAP RING (40X37.5X2.5)
24	0.267.7500.00	1	SHIM KIT (69X79.7)
25	0.124.7135.00	1	NAME PLATE
26	0.248.7500.00	1	SHIM KIT (60.3X71.7)
27	8.5.2.00131	1	SNAP RING (72X75X2.5)

9ft TRAILED TOPPER GEARBOXES ZGPP105 & ZGPP106

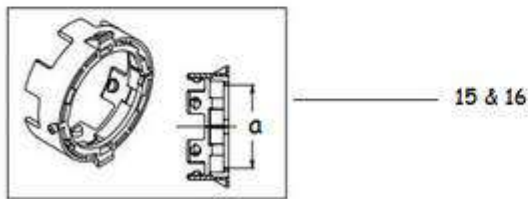
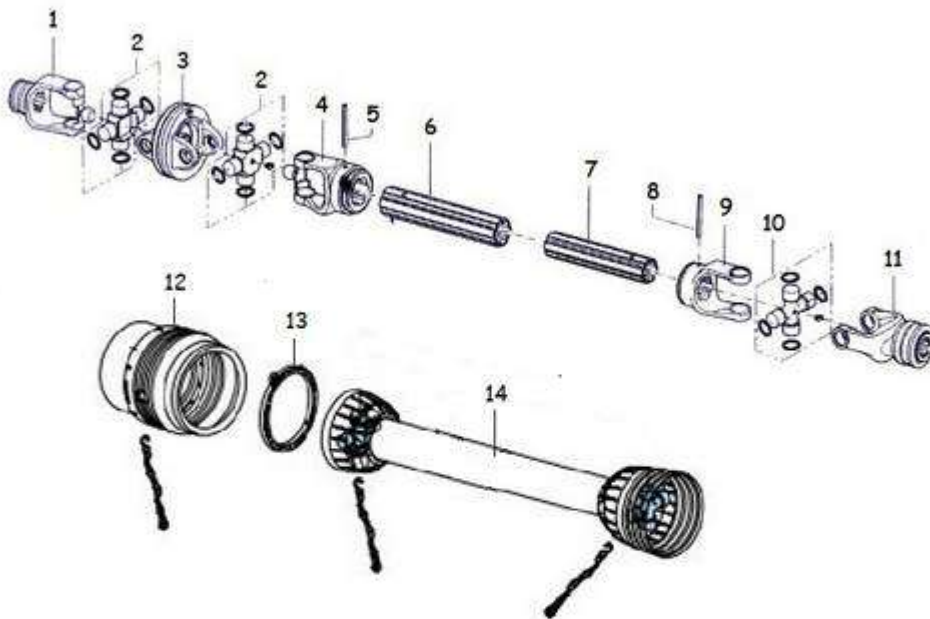


* PLEASE NOTE THE ONLY DIFFERENCE BETWEEN 140.804 AND 140.872 IS THE THROUGH SHAFT PART NUMBER 0.140.2007.00

TABLE NO: 009 COMER L/T GEARBOX 9.140.804.20 /9.140.872.20**ZGPP105 & ZGPP106**

POS.	PART NO.	PCS.	DESCRIPTION:
1	0.248.7500.00		SHIM 71.7
2	8.1.1.00041	4	BOLT
3	8.6.6.00088	1	OIL FILLER PLUG ½"
4	0.140.1302.00	1	COVER
5	8.4.7.01111	3	SPLIT PIN B4X55
6	0.130.5001.00	1	MAIN GEAR Z27 M5.64
7	8.0.9.00026	1	BALL BEARING
8	0.140.0300.00	1	CASING
9	8.5.2.00131	2	CIRCLIP 72 UNI7437
10	8.7.1.00152	1	OIL SEAL
11	0.140.2000.00	1	SHAFT 1 3/8" Z6
12	0.132.7106.00	1	CASTLE NUT M30X1.5
13	0.116.6005.00	1	PINION COG Z14 M5.64
14	0.712.7500.00	1	SHIM 50.3X70.3
15	8.0.9.00469	1	BALL BEARING
16	8.1.1.00054	1	OIL SEAL
17	0.139.7100.00	1	PROTECTION WASHER
18	0.124.7135.00	1	
19	0.140.3002.00	1	PINION SHAFT
20	0.139.7101.00	1	WASHER
21	0.140.7102.00	1	CASTLE NUT
22	8.6.6.00201	2	GAS PLUGS 3/8"
23	8.0.1.00870	1	BALL BEARING
24	8.7.0.00744	1	OIL CAP
25	0.132.7109.00	1	DISTANCE SPACER
	0.140.2007.00	1	STRAIGHT SHAFT FOR T BOX

8/9ft TRAILED TOPPER WIDE ANGLE PTO SHAFT ZGPP104

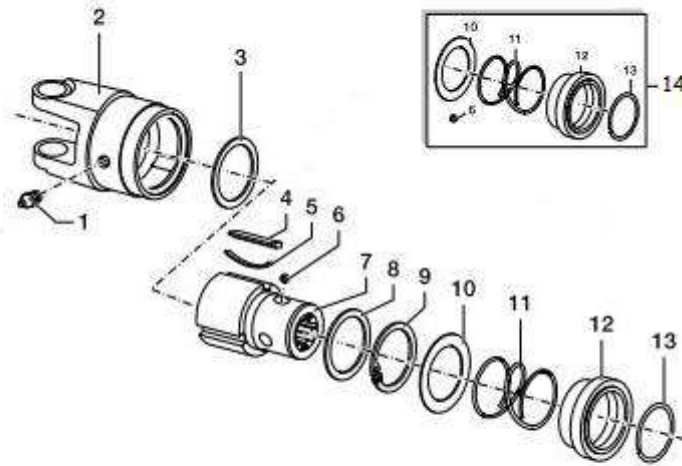


**TABLE NO: 010: 8/9ft TRAILED TOPPER WIDE ANGLE PTO SHAFT
COMER STAR PROFILE VERSION**

ZGPP104

POS.	PART NO.	PCS.	DESCRIPTION:
1	P8C-141-026-503	1	1 3/8" x 6 SPLINE YOKE
2	P8C-180-016-228	1	CROSS & BEARING KIT
3	P8C-141-026-224	1	CENTER HOUSING
4	P8C-141-026-390	1	OUTER PROFILE YOKE
5	P8C-190-000-018		M10 x 80mm ROLL PIN
6	P9T-191160700	1	INNER STAR PROFILE TUBE
7	P9T-191160800	1	OUTER STAR PROFILE TUBE
8	P8C-190-000-016		M10 x 70mm ROLL PIN
9	P8C-151-016-389	1	INNER PROFILE YOKE
10	P8C-180-016-004	1	CROSS & BEARING KIT
11	P8C-145-265-011	1	OVER RUN CLUTCH
12	P8C-165-000-750	1	GUARD CONE
13	P8C-158-016-613	1	CONE RETAINING COLLAR
14	P8C-142-360-015-7650	1	SAFETY COVER
15	P9C-180016595	1	(a=60mm) COVER BEARING
16	P9C-180016596	1	(a=69mm) COVER BEARING

OVER RUN CLUTCH PARTS



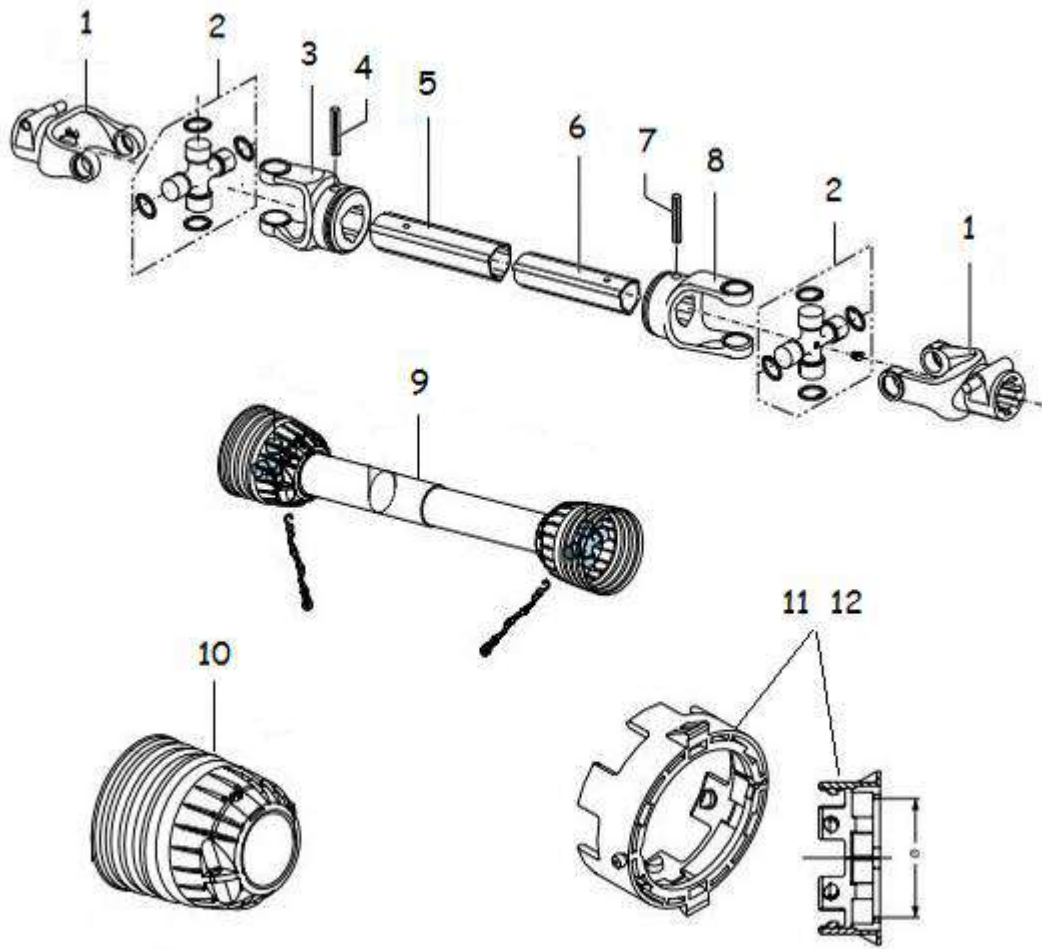
SEE TABLE NO: 011

**TABLE NO 011: 8/9ft TRAILED TOPPER WIDE ANGLE PTO SHAFT
COMER STAR PROFILE VERSION**

ZGPP104

POS.	PART NO.	PCS.	DESCRIPTION:
1	P8C-190-000-020	1	GREASE NIPPLE
2	P8C-141-026-210	1	YOKE SUPPORT
3	P8C-190-000-199	1	RETAINING WASHER
4	P8C-151-014-136	3	PAWL
5	P8C-180-014-137	3	SPRING
6	P8C-190-000-078	3	BALL BEARING
7	P8C-151-016-546	1	HUB
8	P8C-180-014-135	1	RETAINING WASHER RING
9	P8C-190-000-183	1	CIRCLIP
10	P8C-180-015-143	1	SPRING PUSH RING
11	P8C-180-016-487	1	COLLAR SPRING
12	P8C-151-016-486	1	COLLAR
13	P8C-190-000-451	1	SNAP RING
14	P8C-165-000-628	1	COLLAR REPAIR KIT

8/9 ft TRAILED TOPPER PLAIN PTO SHAFT ZGPP103

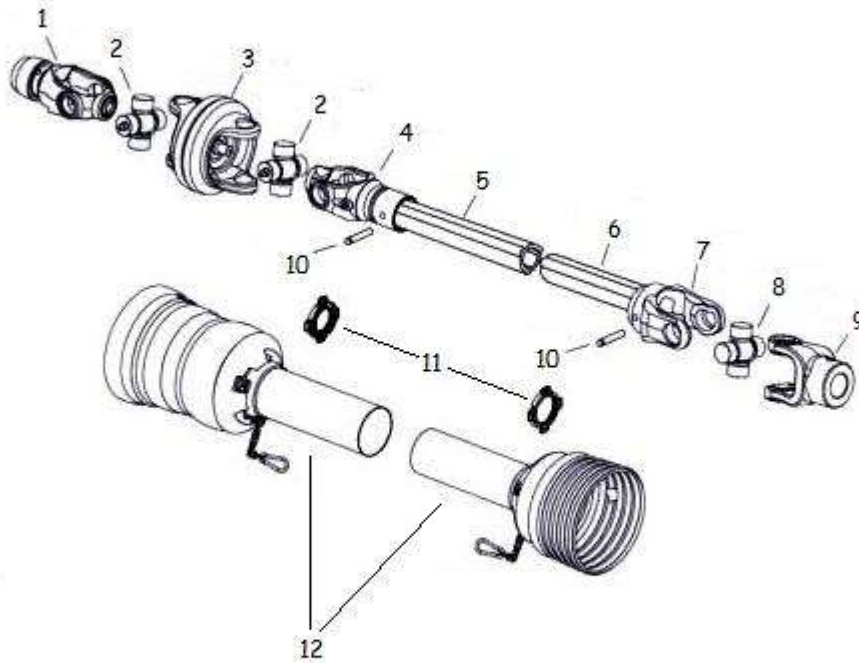


SEE TABLE NO: 012

TABLE NO: 012 8/9' TRAILED PLAIN PTO SHAFT

ZGPP103			
POS.	PART NO.	PCS.	DESCRIPTION:
1	P68C-141-026-544	2	1 3/8" x 6 SPLINED YOKE
2	P8C-180-016-130	2	CROSS & BEARING KIT
3	P8C-151-016-028	1	OUTER PROFILE YOKE
4	P8C-190-000-018	1	M10 x 80mm ROLL PIN
5	P8C-152-160-461-0700	1	OUTER PROFILE TUBE 965mm
6	P8C-153-150-334	1	INNER PROFILE TUBE 980mm
7	P8C190-000-016	1	M10 x 70mm ROLL PIN
8	P8C-151-016-029	1	INNER PROFILE YOKE
9	P8C-142-360-016-9650	1	SAFETY COVER
10	P8C-180-036-633	1	SAFETY COVER CONE
11	P9C-180016596	1	(a=69mm) COVER BEARING
12	P9C-180016595	1	(a=60mm) COVER BEARING

8/9ft TRAILED TOPPER WIDE ANGLE PTO SHAFT ZGPP104



Weasler®

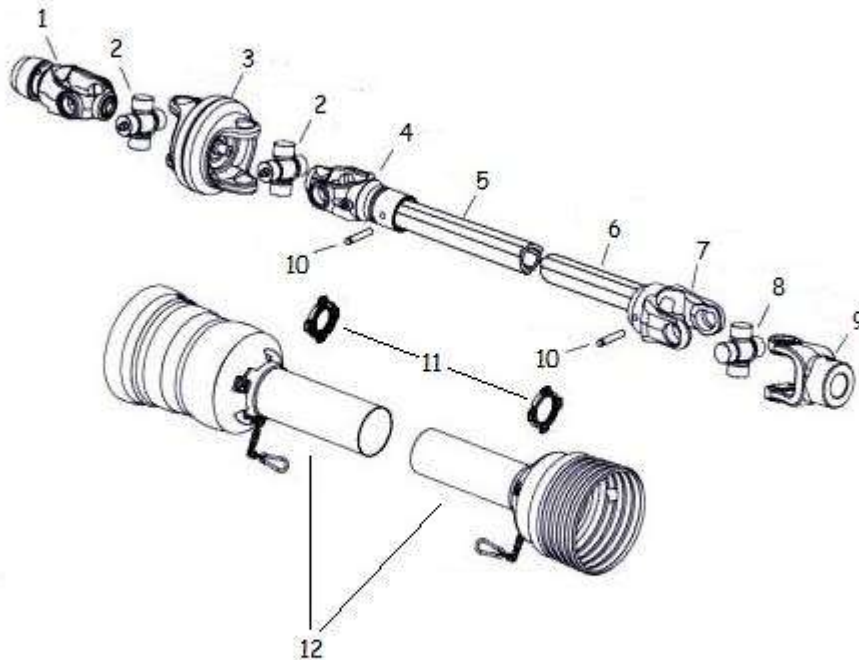
SEE TABLE NO: 013

**TABLE NO: 013 8/9ft TRAILED TOPPER WIDE ANGLE PTO SHAFT
RISLAN COATED LEMON PROFILE VERSION**

ZGPP104

POS.	PART NO.	PCS.	DESCRIPTION:
1	P9T-113-3506	1	1 3/8" x 6 SPLINE Auto Lok YOKE
2	P9T-204-3540	2	CROSS & BEARING KIT
3	P9T-550-1430	1	CENTER HOUSING
4	P9T-304-4839	1	INNER PROFILE YOKE
5	P9T-621-3905-082	1	INNER LEMON PROFILE TUBE
6	P9T-622-4804-000	1	OUTER LEMON PROFILE TUBE
7	P9T-300-7648	1	OUTER PROFILE YOKE
8	P9T-210-7676	1	E-KIT CROSS
9	P9T-550-7606-00	1	OVER RUN CLUTCH
10	P9T-508-1065	1	M10 x 65mm ROLL PIN
11	P9T-968-3536	1	SAFETY COVER BEARING KIT
12	P9T-911-3200-111	1	SAFETY COVER

8/9ft TRAILED TOPPER WIDE ANGLE PTO SHAFT ZGPP104



Weasler®

SEE TABLE NO: 014

**TABLE NO: 014 8/9ft TRAILED TOPPER WIDE ANGLE PTO SHAFT
RISLAN COATED TRIANGULUAR PROFILE VERSION**

ZGPP104

POS.	PART NO.	PCS.	DESCRIPTION:
1	P9T-113-3506	1	1 3/8" x 6 SPLINE Auto Lok YOKE
2	P9T-204-3540	2	CROSS & BEARING KIT
3	P9T-550-1430	1	CENTER HOUSING
4	P9T-304-4845	1	INNER PROFILE YOKE
5	P9T-611-4504-100	1	INNER PROFILE TUBE 1m
6	P9T-612-5404-100	1	OUTER PROFILE TUBE 1m
7		1	OUTER PROFILE YOKE
8	P9T-210-7676	1	E-KIT CROSS
9	P9T-550-7606-00	1	OVER RUN CLUTCH
10	P9T-508-1065	1	M10 x 65mm ROLL PIN
11	P9T-968-3536	1	SAFETY COVER BEARING KIT
12	P9T-911-3200-111	1	SAFETY COVER

WEASLER OVER RUN CLUTCH PARTS



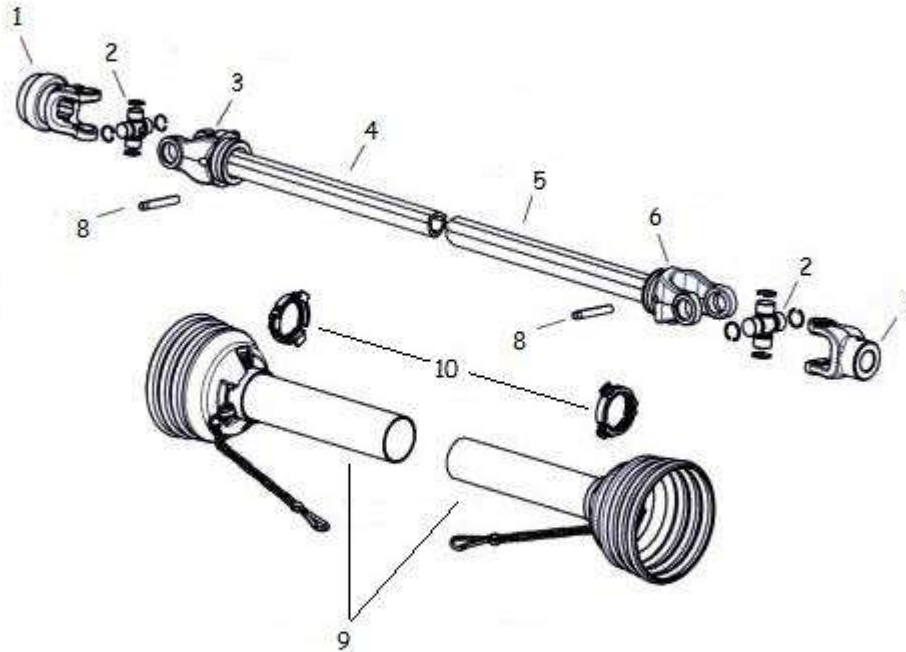
SEE TABLE NO: 015

**TABLE NO 015: 8/9ft TRAILED TOPPER WIDE ANGLE PTO SHAFT
OVER RUN CLUTCH END COMPONENTS**

ZGPP104

POS.	PART NO.	PCS.	DESCRIPTION:
1	P8S-552-0050537	2	PAWL
2	P8S-552-0050436	2	LEAF SPRING
3	P8S-551-5000005	1	SUPPORT RING
4	P8S-39-36061	1	HUB
5	P8S-572-0000103	3	BALL BEARING
6	P8S-552-0000508	1	D72 SNAP RING
7	P8S-552-0000510	1	BACK UP RING
8	P8S-572-0000104	1	SPRING
9	P8S-572-1000102	1	COLLAR
10	P8S-572-0000514	1	BACK UP RING
11	P8S-572-0000515	1	D46 SNAP RING

8/9ft TRAILED TOPPER PLAIN PTO SHAFT ZGPP103

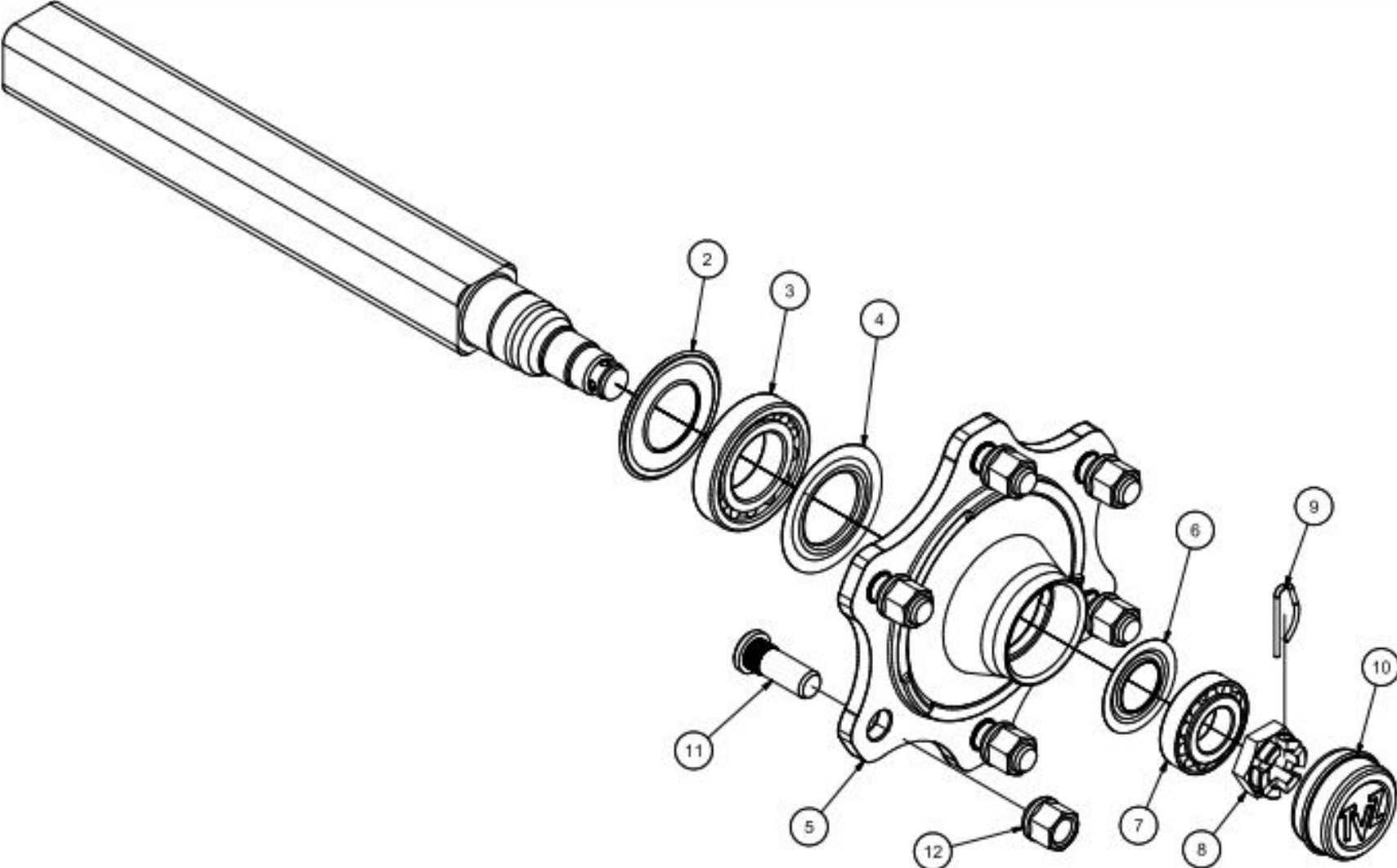


SEE TABLE NO: 016

TABLE NO: 016 8/9ft TRAILED TOPPER PLAIN PTO SHAFT

ZGPP103			
POS.	PART NO.	PCS.	DESCRIPTION:
1	P9T-102-6706	2	1 3/8" x 6 SPLINED YOKE
2	P9T-200-6794	2	CROSS & BEARING KIT
3	P9T-300-6745	1	INNER PROFILE YOKE
4	P9T-610-4504-000	1	INNER PROFILE TUBE 3m
5	P9T-610-5404-000	1	OUTER PROFILE TUBE 3m
6	P9T-300-6754	1	OUTER PROFILE YOKE
8	P9T-508-1085	1	M10 x 85mm ROLL PIN
9	P9T-907-3500-151	1	SAFETY COVER
10	P9T-961-3567	1	SAFETY COVER BEARING KIT

TOP8T & TOP9T TVZ AXLE PART No ZGPP18 & ZGPP21



SEE TABLE NO: 017

TABLE NO: 017 8/9ft TRAILED TOPPER TVZ AXLE**ZGPP18 and ZGPP21**

ITEM	PART NO.	QTY.	DESCRIPTION:
1	ZGPP18	1	TOP8T AXLE COMPLETE
1	ZGPP21	1	TOP9T AXLE COMPLETE
2	5410851	1	REAR SEAL
3	59130209	1	REAR BEARING
4	5510851	1	INNER SEAL
5	61L6JA002	1	HUB
6	5510621	1	OUTER SEAL
7	59130206	1	OUTER BEARING
8	57527B1	1	CASTLE NUT
9	58204	1	SPRING PIN
10	56106210	1	DUST CAP
11	AX-18501.5	1	AXLE STUD 18mmx1.5mmx50mm
12	AX-181.5	1	AXLE NUT 18mmx1.5mm