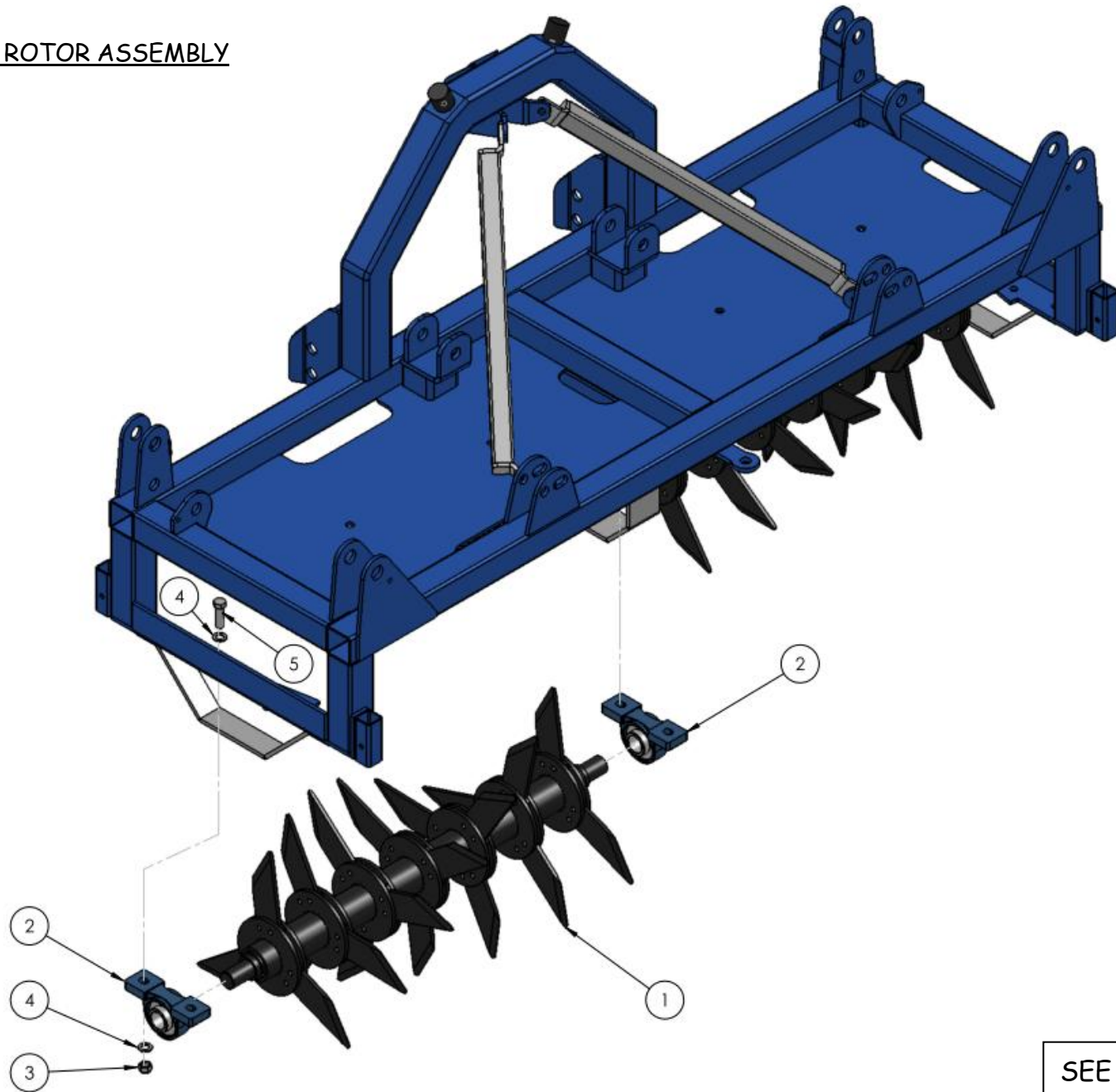


FOLDING AERATOR SPARE PARTS



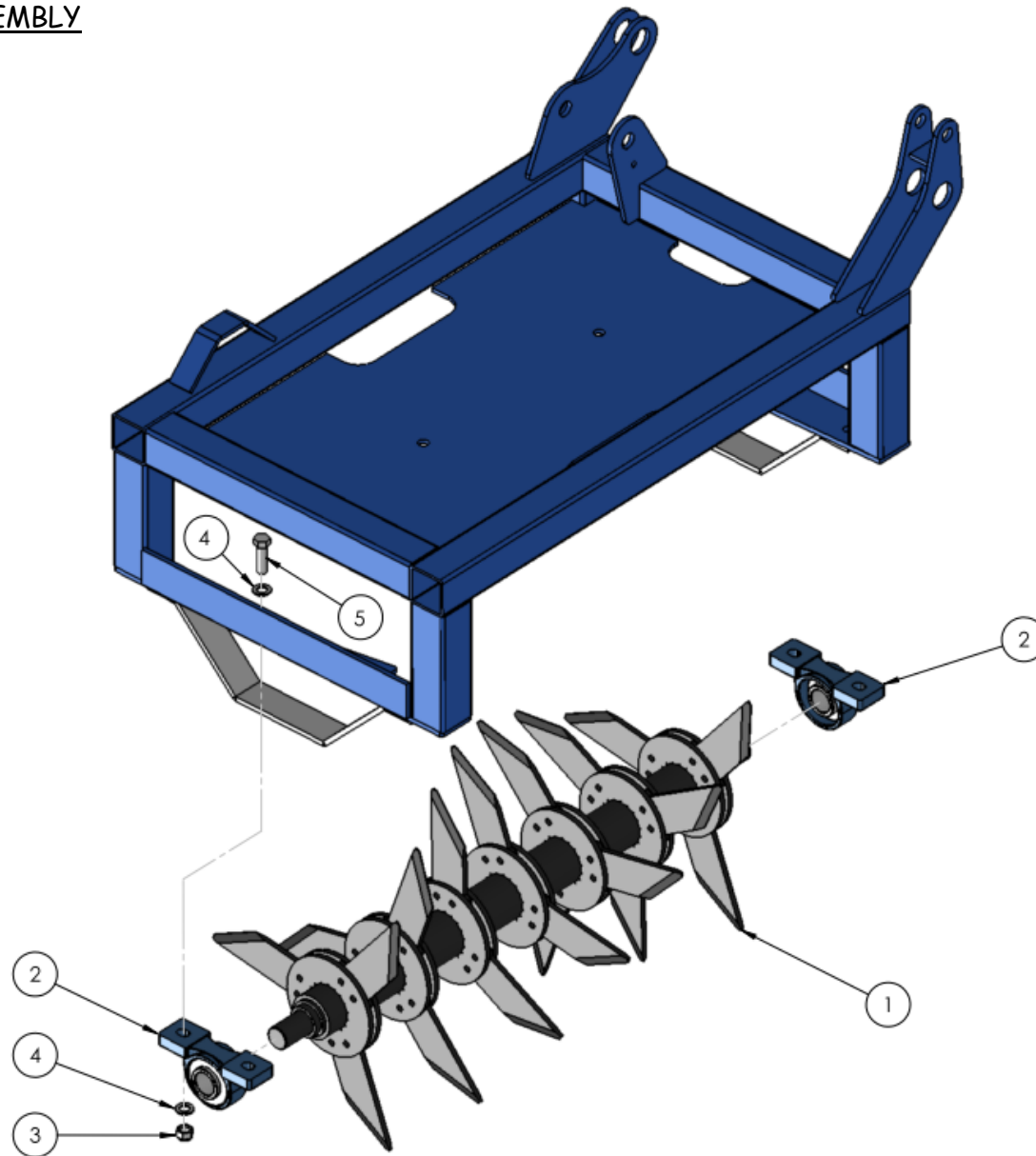
AR16 CENTRE ROTOR ASSEMBLY



SEE TABLE NO: 001

TABLE NO: 001 AR16 CENTRE ROTOR ASSEMBLY			
ITEM NO	DESCRIPTION	AR16	
		CODE	QTY
1	CENTRE ROTOR	P001.475	2
2	PILLOW BLOCK BEARING	ZDRI24	4
3	M18 NYLOCK NUT	ZFAS80	8
4	M18 WASHER ZP	ZFAS111	16
5	M18x70 BOLT	ZFAS121	8

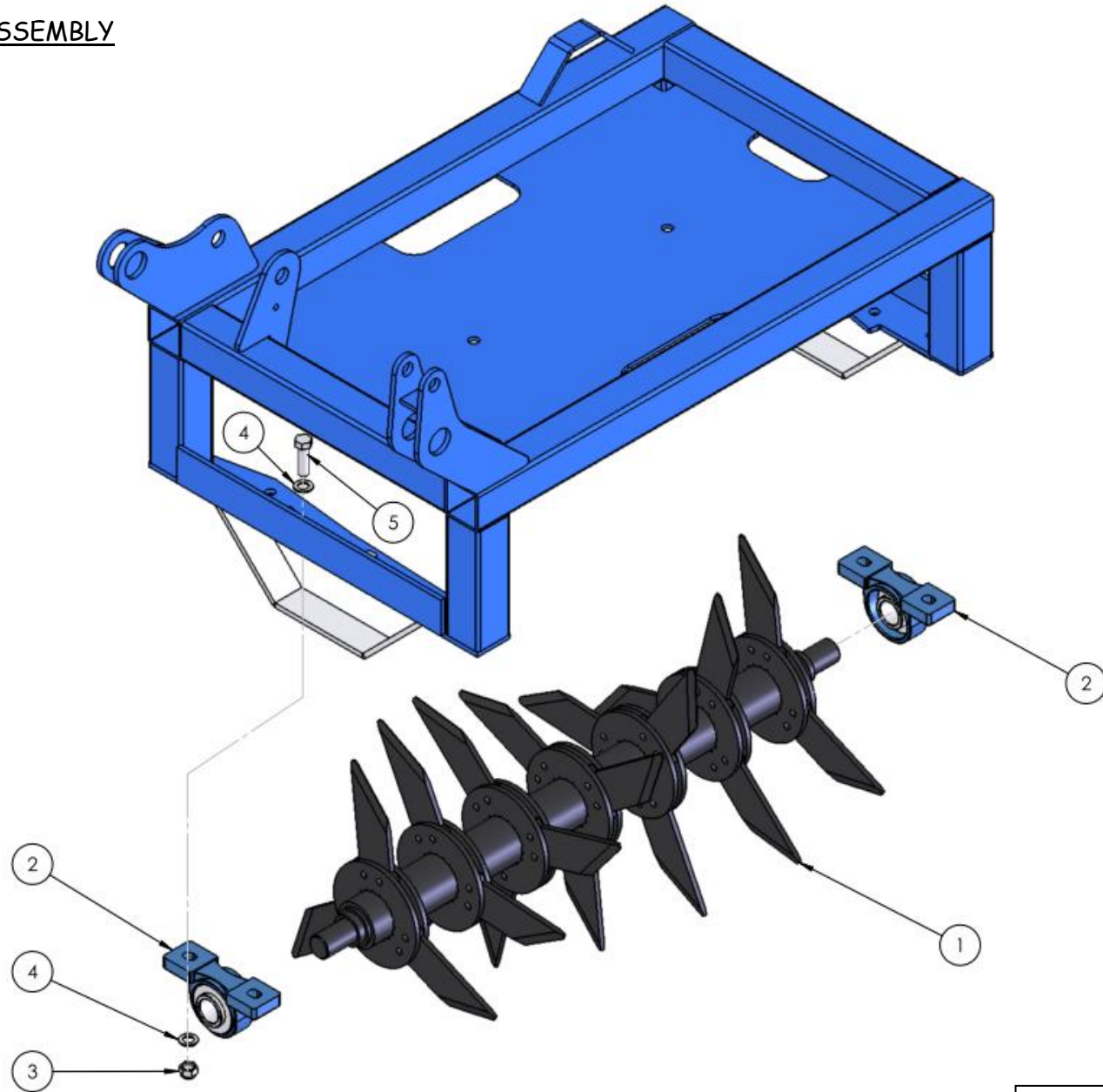
LHD WING ROTOR ASSEMBLY



SEE TABLE NO: 002

TABLE NO: 002 AR16 LHD WING ROTOR ASSEMBLY			
ITEM NO	DESCRIPTION	AR16	
		CODE	QTY
1	CENTRE ROTOR	P001.475	2
2	PILLOW BLOCK BEARING	ZDR124	4
3	M18 NYLOCK NUT	ZFAS80	8
4	M18 WASHER ZP	ZFAS111	16
5	M18x70 BOLT	ZFAS121	8

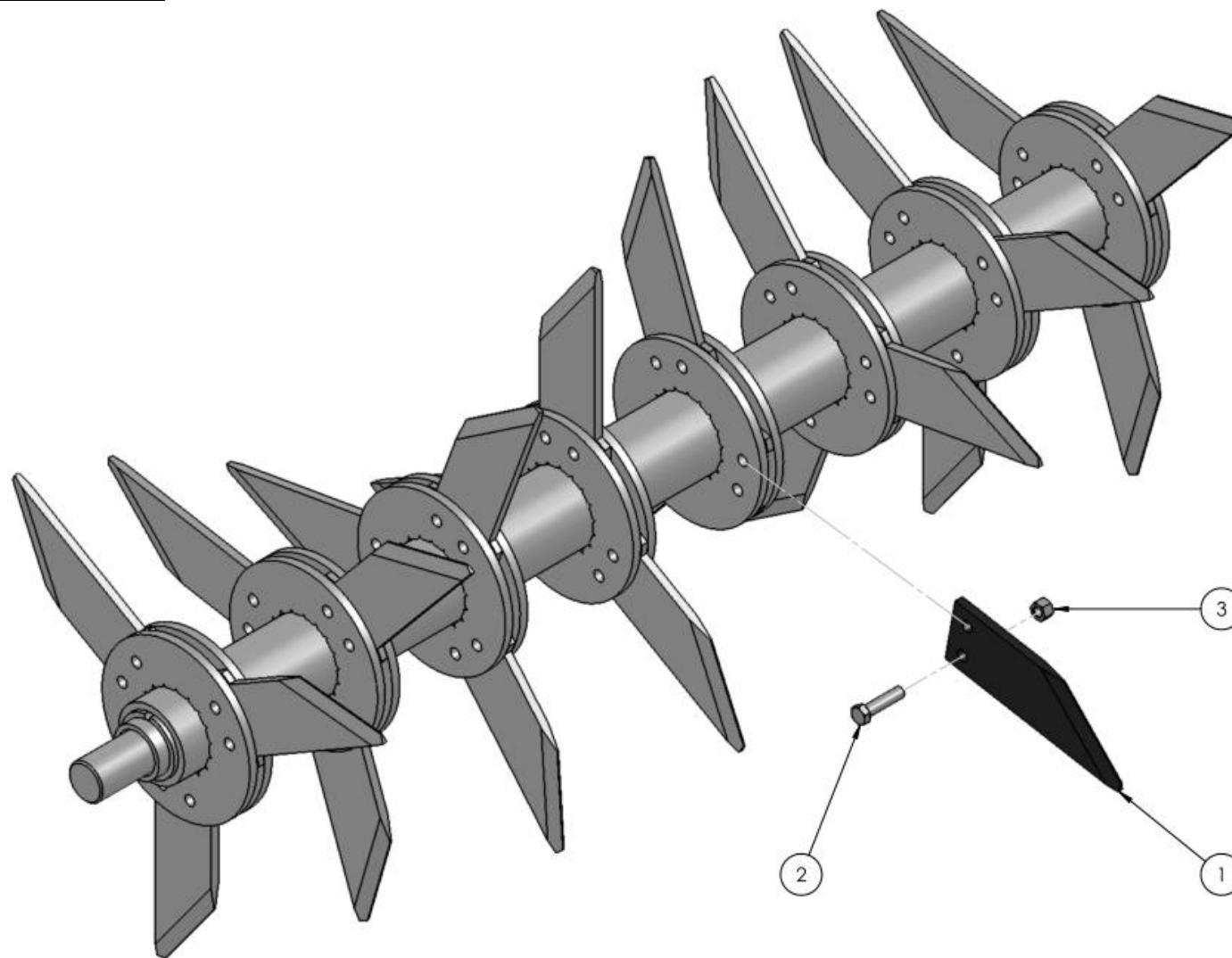
RHD WING ROTOR ASSEMBLY



SEE TABLE NO: 003

TABLE NO: 003 AR16 RHD WING ROTOR ASSEMBLY			
ITEM NO	DESCRIPTION	AR16	
		CODE	QTY
1	CENTRE ROTOR	P001.475	2
2	PILLOW BLOCK BEARING	ZDRI24	4
3	M18 NYLOCK NUT	ZFAS80	8
4	M18 WASHER ZP	ZFAS111	16
5	M18x70 BOLT	ZFAS121	8

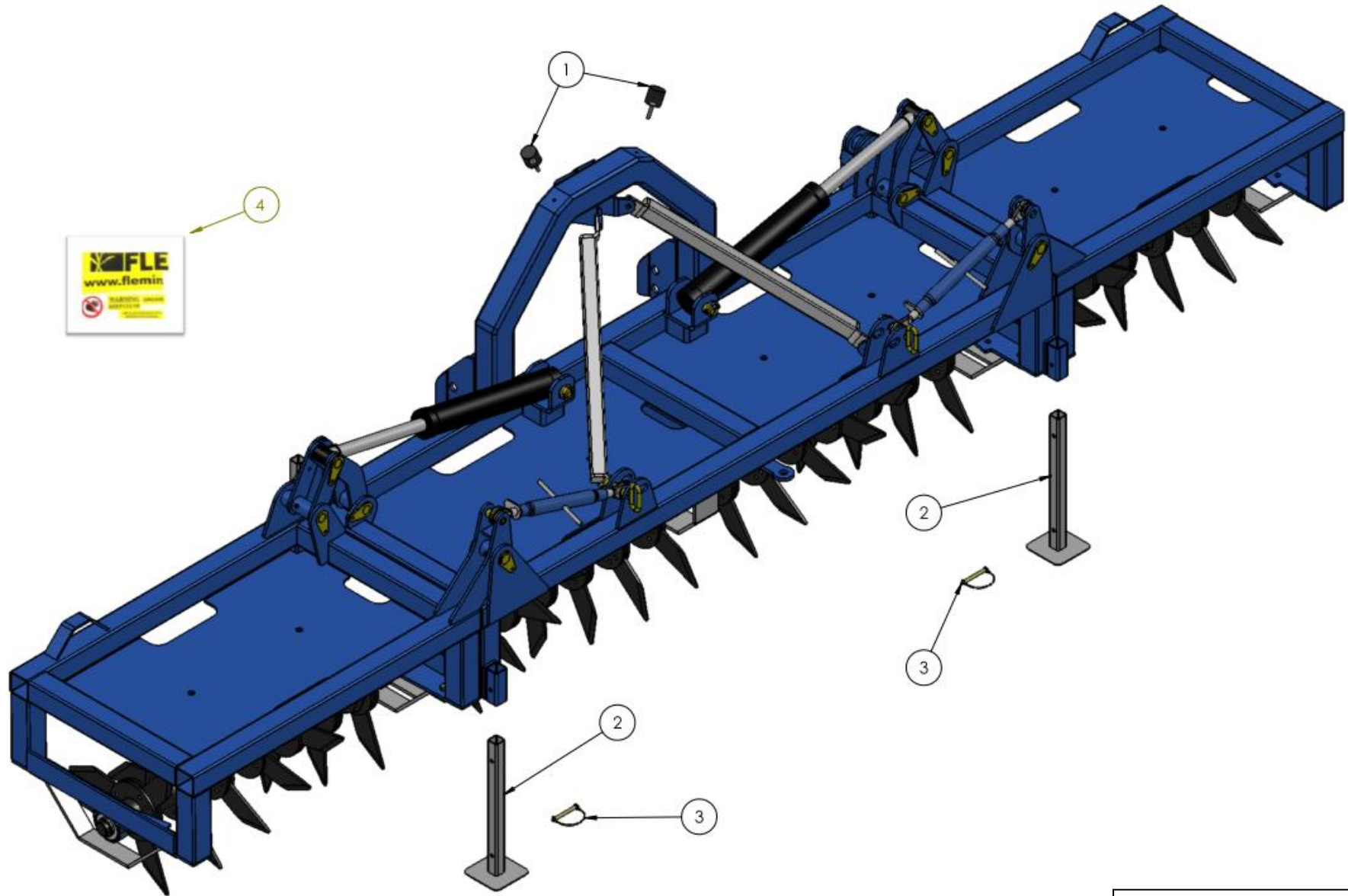
AR16 ROTOR ASSEMBLY



SEE TABLE NO: 004

TABLE NO: 004 AR16 ROTOR ASSEMBLY			
ITEM NO	DESCRIPTION	AR16	
		CODE	QTY
1	REPLACEMENT BLADE	ZGPP178	21
2	½" x 2" UNF BOLT	ZFAS122	42
3	½" UNF NYLOCK NUT	ZFAS123	42

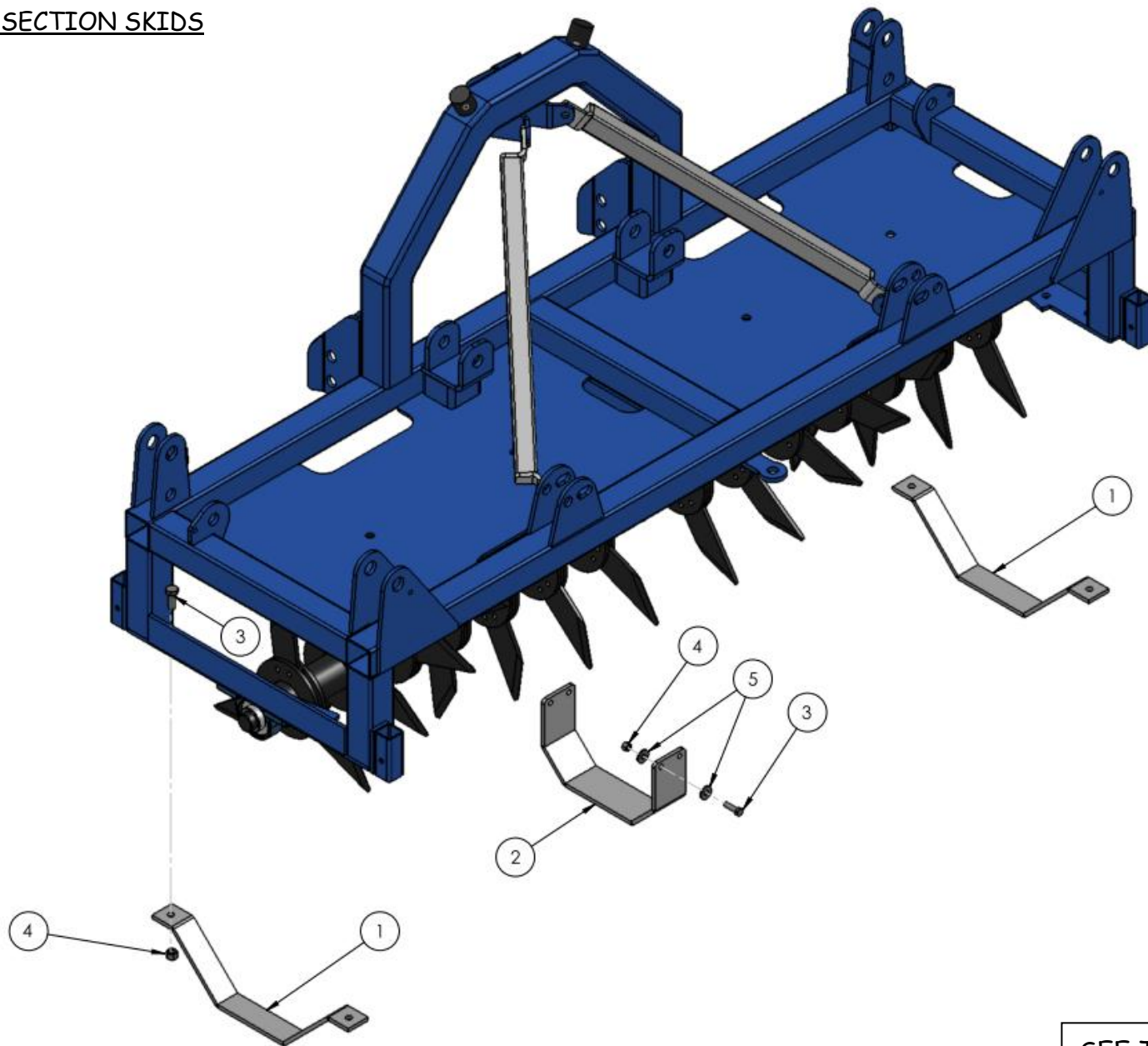
AR16 STANDS



SEE TABLE NO: 005

TABLE NO: 005 AR16 STANDS			
ITEM NO	DESCRIPTION	AR16	
		CODE	QTY
1	RUBBER STOP	ZGPP258	2
2	REPLACEMENT STAND	P001.477	4
3	PIPE LINCH PIN	ZGPP94	4
4	SAFETY STICKER KIT	P001.564	1

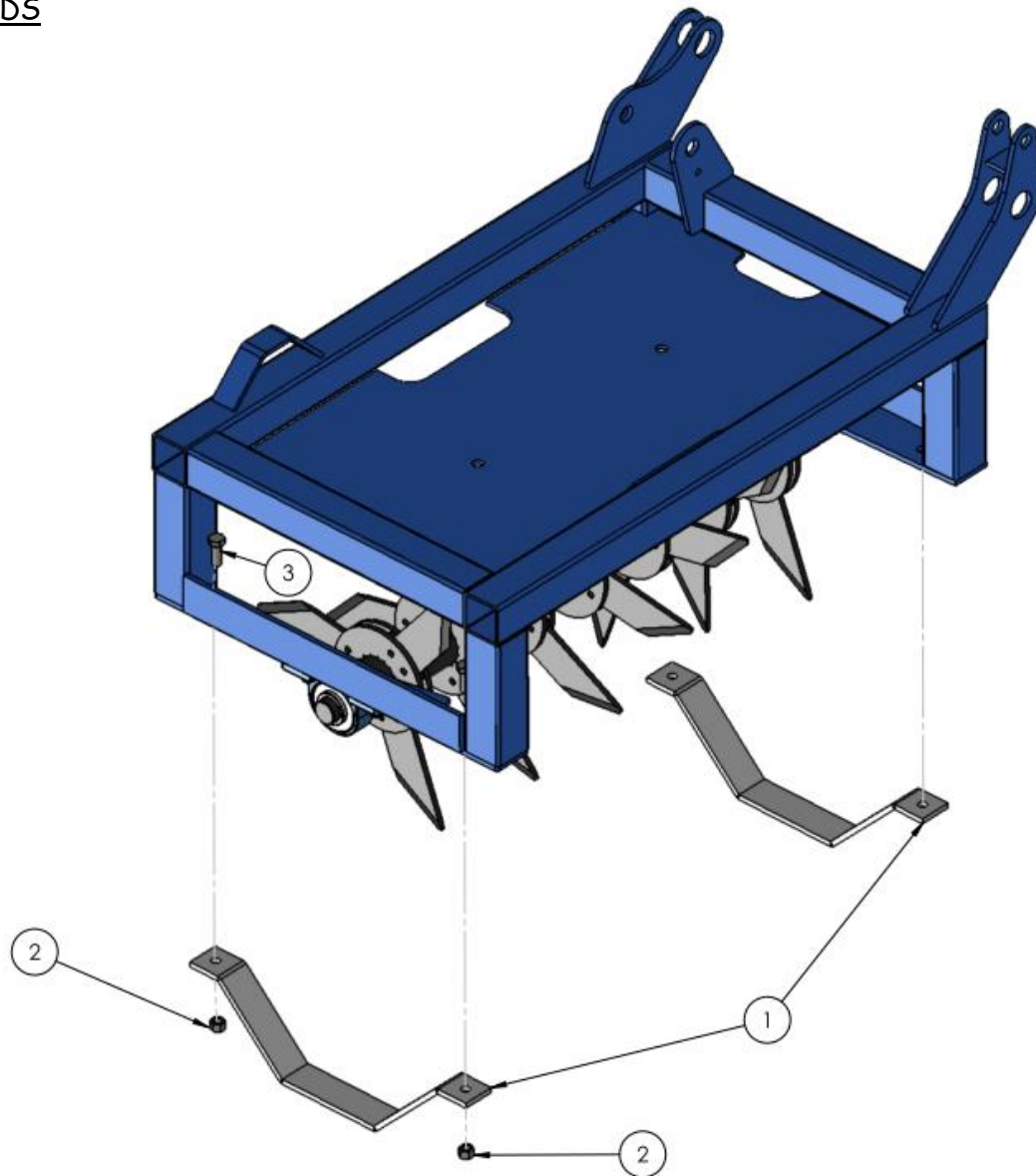
AR16 CENTRE SECTION SKIDS



SEE TABLE NO: 006

TABLE NO: 006 AR16 CENTRE SECTION SKIDS			
ITEM NO	DESCRIPTION	AR16	
		CODE	QTY
1	OUTER SKID	P001.478	2
2	CENTRE SKID	P001.479	1
3	M16x45 BOLT	ZFAS11	8
4	M16 NYLOCK NUT	ZFAS23	8
5	M16 WASHER ZP	ZFAS36	8

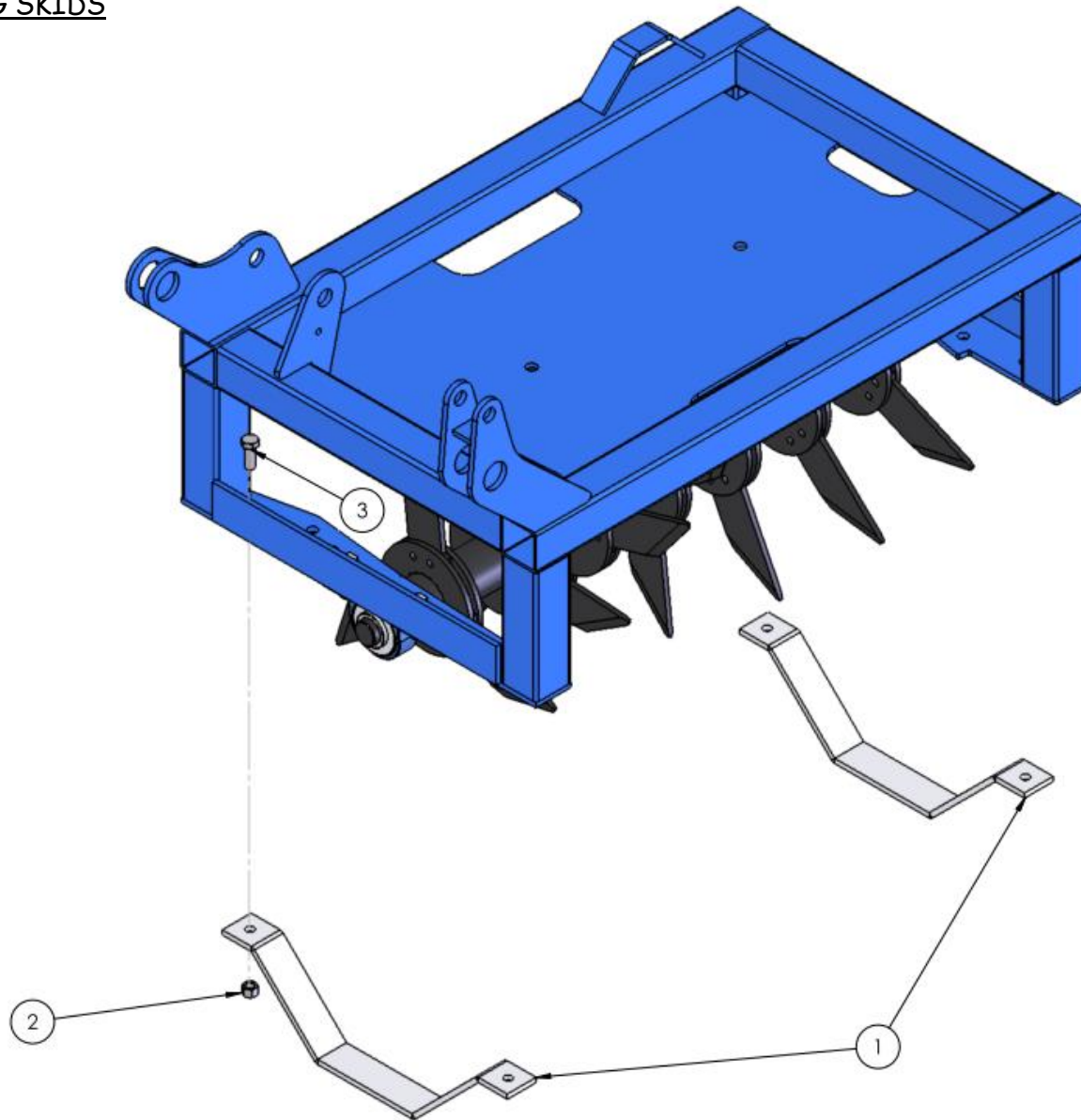
AR16 LHD WING SKIDS



SEE TABLE NO: 007

TABLE NO: 007 AR16 LHD WING SKIDS			
ITEM NO	DESCRIPTION	AR16	
		CODE	QTY
1	OUTER SKID	P001.478	2
2	M16x45 BOLT	ZFAS11	4
3	M16 NYLOCK NUT	ZFAS23	4

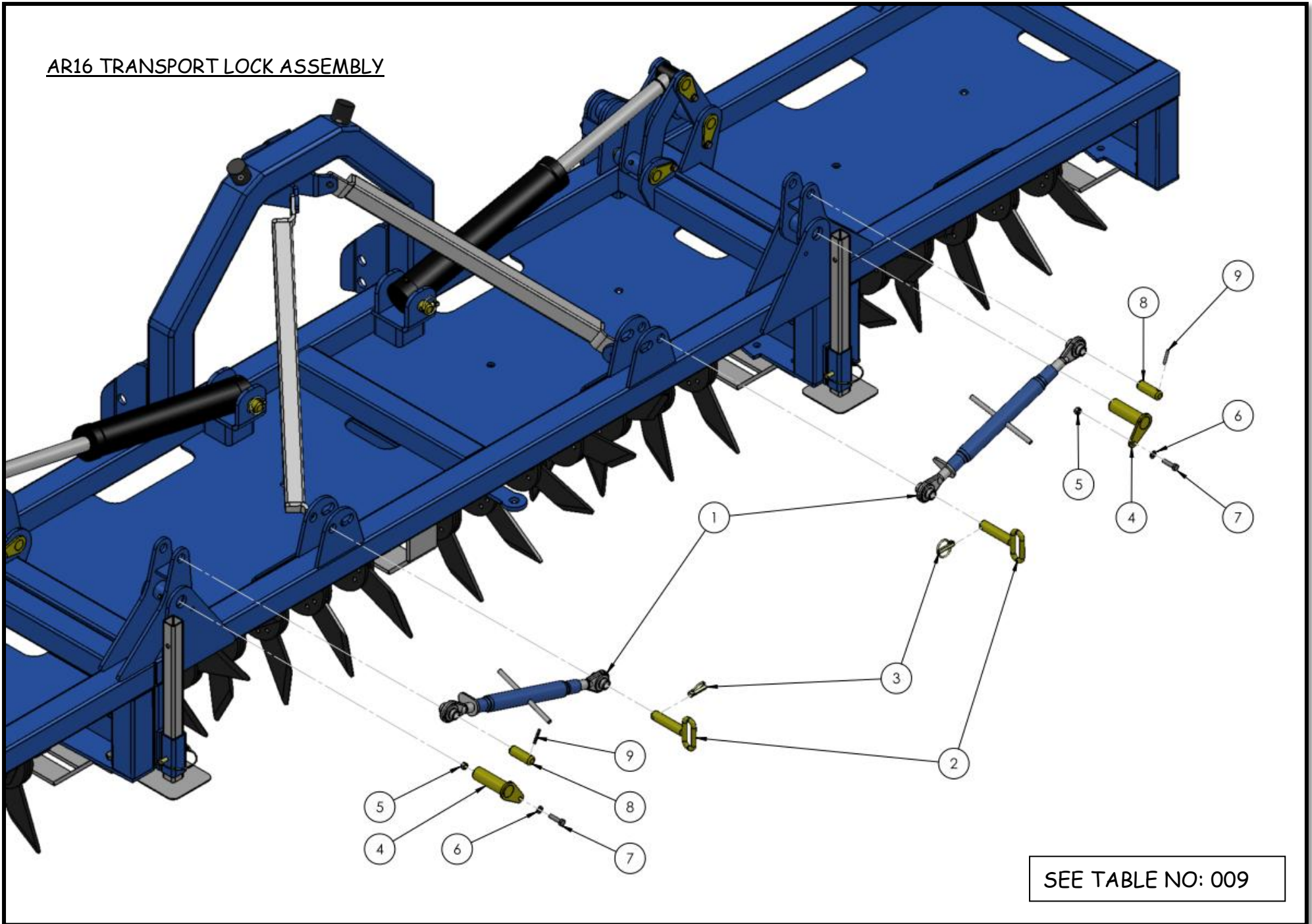
AR16 RHD WING SKIDS



SEE TABLE NO: 008

TABLE NO: 008 AR16 RHD WING SKIDS			
ITEM NO	DESCRIPTION	AR16	
		CODE	QTY
1	OUTER SKID	P001.478	2
2	M16x45 BOLT	ZFAS11	4
3	M16 NYLOCK NUT	ZFAS23	4

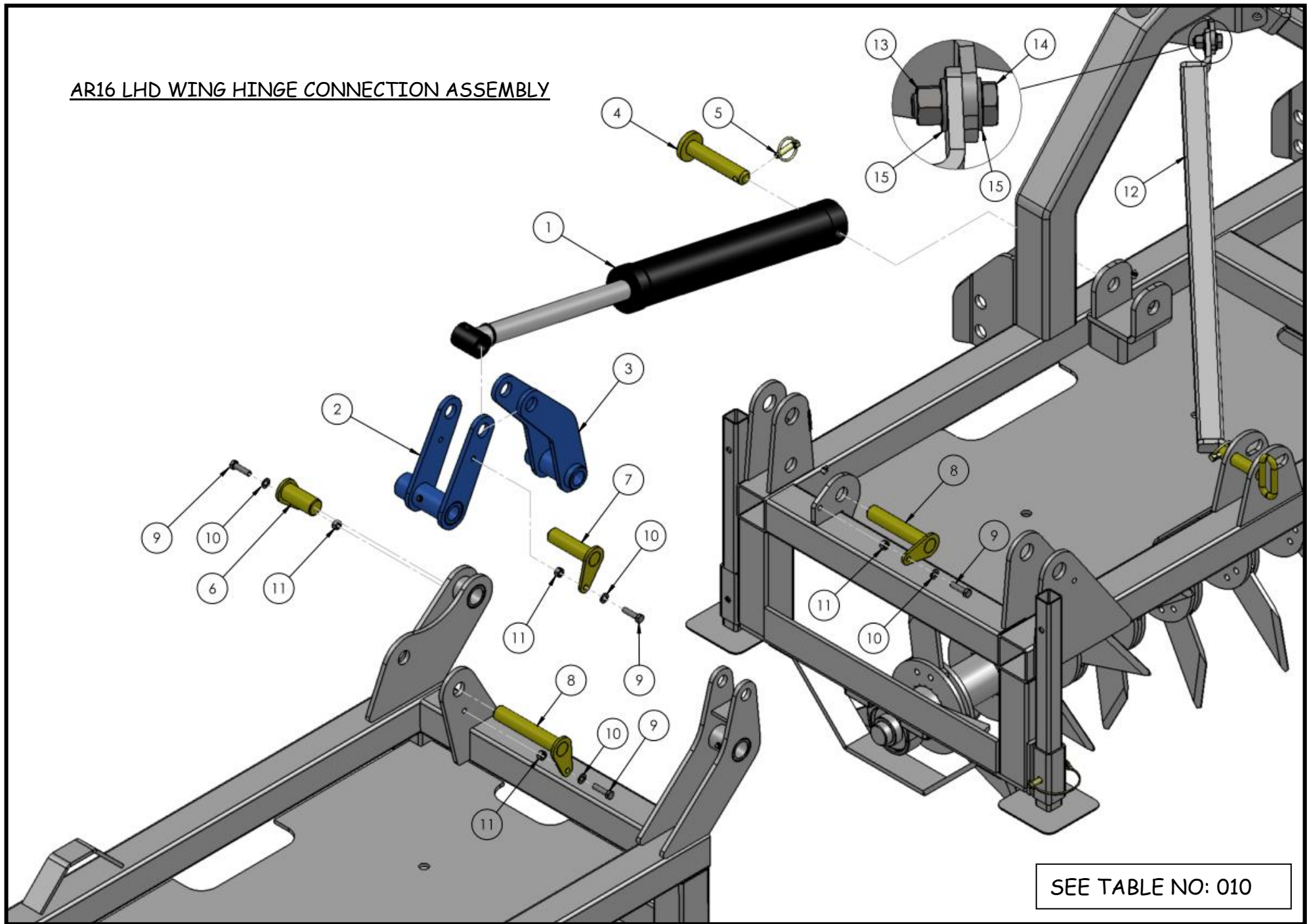
AR16 TRANSPORT LOCK ASSEMBLY



SEE TABLE NO: 009

TABLE NO: 009 AR16 TRANSPORT LOCK ASSEMBLY			
ITEM NO	DESCRIPTION	AR16	
		CODE	QTY
1	TOP LINK	ZGPP47A	2
2	TOPLINK PIN C/W HANDLE	P001.482	2
3	M10x40 LINCH PIN	ZFAS31	2
4	PIVOT PIN	ZMAC104	2
5	M10 NYLOCK NUT	ZFAS20	2
6	M10 WASHER ZP	ZFAS03	4
7	M10x40 SETSCREW ZP	ZFAS105	2
8	TOP LINK RETAINING PIN	P001.483	2
3	M6x40 ROLL PIN	ZFAS30	2

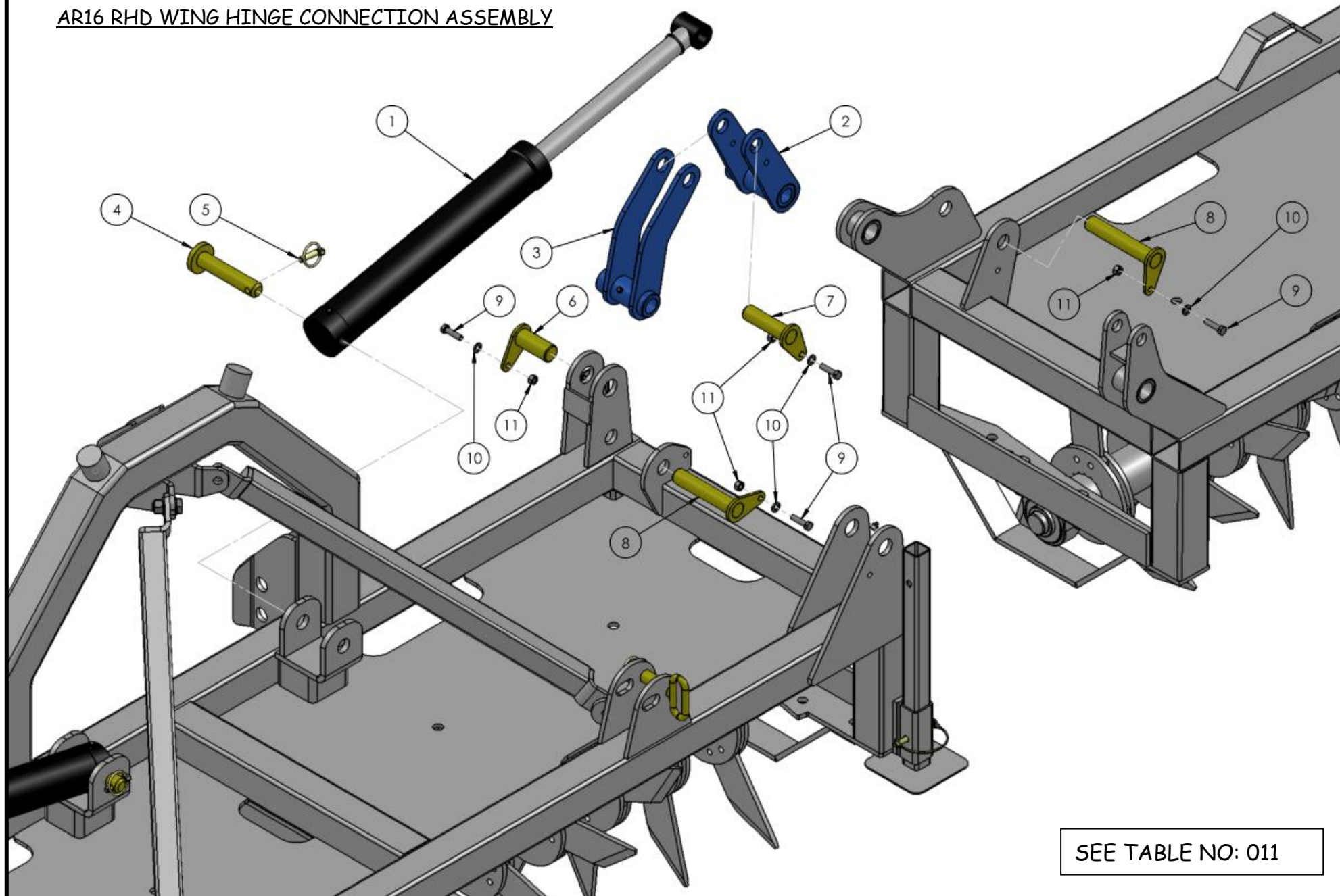
AR16 LHD WING HINGE CONNECTION ASSEMBLY



SEE TABLE NO: 010

TABLE NO: 010 AR16 LHD WING HINGE CONNECTION ASSEMBLY			
ITEM NO	DESCRIPTION	AR16	
		CODE	QTY
1	HYDRAULIC RAM	ZHYD62	1
2	LHD LINKAGE BRACKET STRAIGHT	P001.484	1
3	LHD LINKAGE BRACKET CRANKED	P001.485	1
4	RAM PIN	ZMAC100	1
5	M10x40 LINCH PIN	ZFAS31	1
6	PIVOT PIN (79mm)	ZMAC101	1
7	RETAINING PIN (120mm)	ZMAC102	1
8	RETAINING PIN (184mm)	ZMAC103	1
9	M10x40 SETSCREW ZP	ZFAS105	4
10	M10 WASHER ZP	ZFAS03	8
11	M10 NYLOCK NUT	ZFAS20	4
12	STAY BAR	P001.486	1
13	M16 NYLOCK NUT	ZFAS23	2
14	M16x45 SETSCREW ZP	ZFAS11	2
15	M16 WASHER ZP	ZFAS36	4

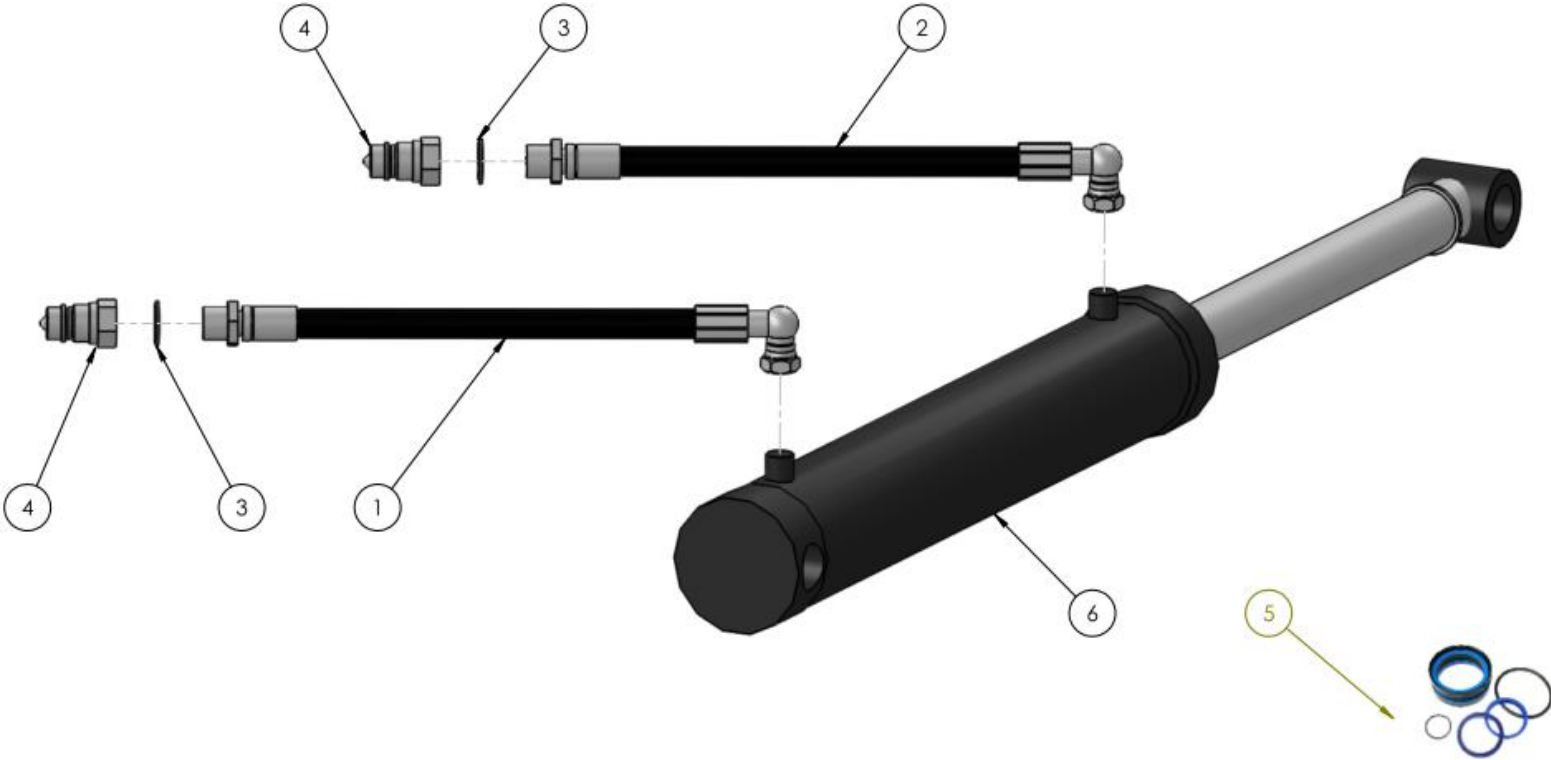
AR16 RHD WING HINGE CONNECTION ASSEMBLY



SEE TABLE NO: 011

TABLE NO: 011 AR16 RHD WING HINGE CONNECTION ASSEMBLY			
ITEM NO	DESCRIPTION	AR16	
		CODE	QTY
1	HYDRAULIC RAM	ZHYD62	1
2	RHD LINKAGE BRACKET STRAIGHT	P001.487	1
3	RHD LINKAGE BRACKET CRANKED	P001.488	1
4	RAM PIN	ZMAC100	1
5	M10x40 LINCH PIN	ZFAS31	1
6	PIVOT PIN (79mm)	ZMAC101	1
7	RETAINING PIN (120mm)	ZMAC102	1
8	RETAINING PIN (184mm)	ZMAC103	1
9	M10x40 SETSCREW ZP	ZFAS105	4
10	M10 WASHER ZP	ZFAS03	8
11	M10 NYLOCK NUT	ZFAS20	4

AR16 AERATOR HYDRAULICS



SEE TABLE NO: 012

TABLE NO: 012 AR16 AERATOR HYDRAULICS			
ITEM NO	DESCRIPTION	AR16	
		CODE	QTY
1	HYDRAULIC HOSE C/W FITTINGS	ZGPP63	1
2	HYDRAULIC HOSE C/W FITTINGS	ZHYD02	1
3	DOWDY SEAL	ZHYD22	2
4	½" MALE PROBE	ZHYD26	2
5	HYDRAULIC SEAL KIT	P001.489	1
6	HYDRAULIC RAM	ZHYD62	1