

BULLY TILLER UH-SERIES UH2.1 (UH84) - UH1.8 (UH72)



SPARE PARTS LIST

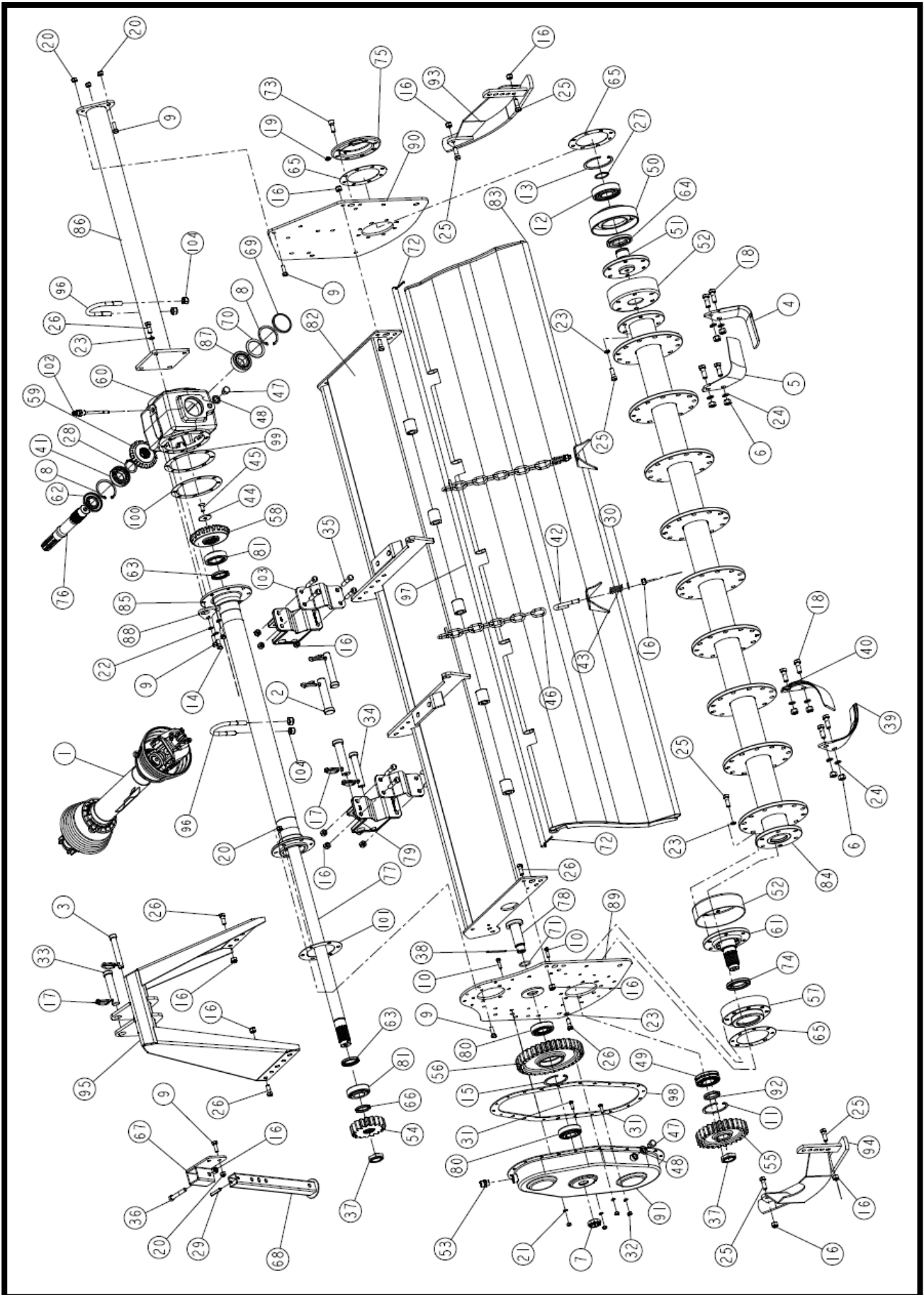


Manufacturer:
Tirth Agro Technology Pvt. Ltd.
ISO 9001:2008 Certified Company

Manual P/N: OM 1121 / REV. 04 / 2014



UH2.1 (UH84) CE VERSION TILLER SPARE PARTS TABLES



U-Series UH Rotary Tillers

➤ **UH2.1 (UH84) CE VERSION TILLER SPARE PARTS TABLES**

ITEM	P/NUMBER	QTY.	DESCRIPTION
1	1509	1	SHEAR BOLT PTO 6SP COM(COVER)14.5"(35MM)
2	1217	2	HITCH PIN BOTTOM CAT-II (DIA-28 X 129)
3	1214	1	HINCH PIN TOP CAT-I (DIA- 19 X 126)
4	1372	27	BLADE L-TYPE RH (REG B.H.) INDIAN
5	1373	27	BLADE L-TYPE LH (REG B.H.) INDIAN
6	9528	108	HEX NUT M14 X 1.50
7	8032	1	CASTLE NUT 28mm
8	1002	2	CIRCLIP INTERNAL 72mm
9	10181	13	HEX BOLT M10 X 1.50 X 30
10	6072	2	HEX BOLT M8 X 1.25 X 30
11	1049	1	CIRCLIP INTERNAL 85mm
12	1073	1	BEARING 6309 LU
13	1074	1	CIRCLIP INTERNAL 100mm
14	10180	6	HEX BOLT M10 X 1.50 X 25
15	1130	1	CIRCLIP INTERNAL 80mm
16	1209	39	NYLOCK NUT M12 X 1.75
17	1218	6	LINCH PIN
18	2202	108	HEX BOLT M14 X 1.50 X 37
19	1253	1	1/8 BSP GREASE NIPPLE 7.5MM
20	1298	11	NYLOCK NUT M10 X 1.50
21	1303	22	SPRING WASHER 8mm
22	1304	8	SPRING WASHER 10mm
23	1306	24	SPRING WASHER 12mm
24	1307	108	SPRING WASHER 14mm
25	10194	16	HEX BOLT M12 X 1.75 X 35
26	10192	36	HEX BOLT M12 X 1.75 X 30
27	2089	1	CIRCLIP EXTERNAL 45mm
28	8027	1	CIRCLIP EXTERNAL 40mm
29	8047	1	DOWEL PIN DIA 8 X 50
30	8126	2	PLAIN WASHER 12mm
31	8171	20	HEX BOLT M8 X 1.25 X 25
32	8181	22	HEX NUT M8 X 1.25
33	1215	1	HINCH PIN TOP CAT-II (DIA- 25 X 126)
34	1216	2	HITCH PIN BOTTOM CAT-I (DIA-22 X 129)
35	1548	8	HEX BOLT M12 X 1.75 X 60
36	12057	1	HEX BOLT M12 X 1.75 X 70
37	1449	2	Nylock Nut M35 X 1.50mm
38	14137	1	COTTER PIN (DIA 3.5 X 70)
39	3126	27	BLADE C-TYPE LH (80X7)
40	3127	27	BLADE C-TYPE RH (80X7)

U-Series UH Rotary Tillers

41	10143	1	BEARING 6207
42	14004	2	J-BOLT M12 x 1.75 x 24 x 87.5 x 25TL
43	14005	2	U-BOLT SPRING (U-SERIES)
44	14049	1	CROWN WASHER (U-SERIES)
45	14058	1	CSK BOLT M10 X 1.5 X 25
46	14073	2	LIFTING CHAIN TB
47	10179	2	3/8" NPT PLUG WITH SQ. HEAD
48	9564	2	PLAIN WASHER 3/8" ALU.
49	8268	1	BEARING 22209
50	14114	1	RD SHAFT HOUSING GEAR SIDE (U/M-SERIES)
51	14117	1	STUB AXLE SHAFT SD SIDE (U/M-SERIES)
52	14130	2	DUST COVER (U/M-SERIES)
53	14126	1	AIR BREATHER 1/2" BSP
54	14138	1	SIDE GEAR 17 TEETH (U/H SERIES)
55	14139	1	SIDE GEAR 26 TEETH (U/H SERIES)
56	14140	1	SIDE GEAR 36 TEETH (U/H SERIES)
57	14141	1	R D HOUSING (U/H SERIES)
58	14142	1	CROWN 22 TEETH (U/H SERIES)
59	14143	1	PINION 15 TEETH (U/H SERIES)
60	14144	1	GEAR BOX 540 RPM (U/H SERIES)
61	14145	1	R D SHAFT GEAR SIDE (U/H SERIES)
62	10229	1	OIL SEAL 35 x 72 x 8
63	14121	2	OIL SEAL 40 x 62 x 7
64	14122	1	OIL SEAL 55 x 90 x 10
65	14135	3	R D HOUSING GASKET (U/M-SERIES)
66	14098	1	SPACER DIA-52 x 40.15 x 5.5 MM
67	14104	1	SIDE STAND OUTER COMP (U/M-SERIES)
68	14105	1	SIDE STAND INNER COMP (U/M-SERIES)
69	14119	1	OIL SEAL 72 x 8
70	14120	1	SPACER 71.50 x 56 x 3
71	4663	2	O RING 35 X 3.5
72	19018	2	COTTER PIN (DIA 4 X 35)
73	17027	8	ALLEN BOLT M12 X 1.75 X 30 (FT)(8.8)
74	14128	1	OIL SEAL 85 X 55 X 8
75	14102	1	STUB AXLE END COVER COMP(U/M-SERIES)
76	14146	1	INPUT SHAFT 540 (U/H-SERIES)
77	14147	1	JACK SHAFT 1106.50mm (U/H-SERIES)
78	14148	1	R D SHAFT MIDDLE (U/H-SERIES)
79	4678	2	CASTING BRACKET (REG L)
80	14177	2	BEARING 30307
81	14149	2	BEARING 32208
82	14150	1	HULL COMP 2.1M (U/H SERIES)

U-Series UH Rotary Tillers

83	14151	1	TRAILING BOARD COMP 2.1M (U/H SERIES)
84	14152	1	ROTOR COMP 2.1M (U/H SERIES)
85	14153	1	J/S HOUSING COMP 2.1M (U/H SERIES)
86	14154	1	FULL HOUSING COMP 2.1M(U/H SERIES)
87	14155	1	BEARING 32207
88	14178	1	GEAR BOX LIFTING HOOK (U/H SERIES)
89	14157	1	R D PLATE GD COMP (U/H SERIES)
90	14179	1	S D PLATE (U/H SERIES)
91	14160	1	CHAIN COVER GD COMP (U/H SERIES)
92	14162	1	SPACER DIA-57 x 45 x 7 MM
93	14163	1	DEPTH SKID COMP RH (U/H SERIES)
94	14164	1	DEPTH SKID COMP LH (U/H SERIES)
95	14165	1	TOP MAST COMP (U/H SERIES)
96	14167	2	U BEND BOLT M14X2X86X117.5X36.5TL
97	14168	1	TRAILING BOARD ROD 2.1M(U/H SERIES)
98	14173	1	CHAIN COVER GD GASKET (U/H SERIES)
99	14174	1	HOU. FLANGE BIG GASKET(U/H SERIES)0.4MM
100	14175	1	HOU. FLANGE BIG GASKET(U/H SERIES)0.8MM
101	14176	1	HOUSING FLANGE SMALL GASKET (U/H SERIES)
102	14238	1	DIPSTICK 95mm (M16 x 1.5)
103	1570	2	CASTING HITCHING BRACKET ANGLE (REG L)
104	1574	4	NYLOCK NUT M14 X 2

➤ **UH1.8 (UH72) CE VERSION TILLER SPARE PARTS TABLES**

ITEM	P/NUMBER	QTY.	DESCRIPTION
1	1509	1	SHEAR BOLT PTO 6SP COM(COVER)14.5"(35MM)
2	1217	2	HITCH PIN BOTTOM CAT-II (DIA-28 X 129)
3	1214	1	HINCH PIN TOP CAT-I (DIA- 19 X 126)
4	1372	24	BLADE L-TYPE RH (REG B.H.) INDIAN
5	1373	24	BLADE L-TYPE LH (REG B.H.) INDIAN
6	9528	100	HEX NUT M14 X 1.50
7	8032	1	CASTLE NUT 28mm
8	1002	2	CIRCLIP INTERNAL 72mm
9	10181	13	HEX BOLT M10 X 1.50 X 30
10	6072	2	HEX BOLT M8 X 1.25 X 30
11	1049	1	CIRCLIP INTERNAL 85mm
12	1073	1	BEARING 6309 LU
13	1074	1	CIRCLIP INTERNAL 100mm
14	10180	6	HEX BOLT M10 X 1.50 X 25
15	1130	1	CIRCLIP INTERNAL 80mm
16	1209	39	NYLOCK NUT M12 X 1.75

U-Series UH Rotary Tillers

17	1218	6	LINCH PIN
18	2202	96	HEX BOLT M14 X 1.50 X 37
19	1253	1	1/8 BSP GREASE NIPPLE 7.5MM
20	1298	11	NYLOCK NUT M10 X 1.50
21	1303	22	SPRING WASHER 8mm
22	1304	8	SPRING WASHER 10mm
23	1306	24	SPRING WASHER 12mm
24	1307	96	SPRING WASHER 14mm
25	10194	16	HEX BOLT M12 X 1.75 X 35
26	10192	36	HEX BOLT M12 X 1.75 X 30
27	2089	1	CIRCLIP EXTERNAL 45mm
28	8027	1	CIRCLIP EXTERNAL 40mm
29	8047	1	DOWEL PIN DIA 8 X 50
30	8126	2	PLAIN WASHER 12mm
31	8171	20	HEX BOLT M8 X 1.25 X 25
32	8181	22	HEX NUT M8 X 1.25
33	1215	1	HINCH PIN TOP CAT-II (DIA- 25 X 126)
34	1216	2	HITCH PIN BOTTOM CAT-I (DIA-22 X 129)
35	1548	8	HEX BOLT M12 X 1.75 X 60
36	12057	1	HEX BOLT M12 X 1.75 X 70
37	1449	2	Nylock Nut M35 X 1.50mm
38	14137	1	COTTER PIN (DIA 3.5 X 70)
39	3126	24	BLADE C-TYPE LH (80X7)
40	3127	24	BLADE C-TYPE RH (80X7)
41	10143	1	BEARING 6207
42	14004	2	J-BOLT M12 x 1.75 x 24 x 87.5 x 25TL
43	14005	2	U-BOLT SPRING (U-SERIES)
44	14049	1	CROWN WASHER (U-SERIES)
45	14058	1	CSK BOLT M10 X 1.5 X 25
46	14073	2	LIFTING CHAIN TB
47	10179	2	3/8" BSPT PLUG WITH SQ. HEAD
48	9564	2	PLAIN WASHER 3/8" ALU.
49	8268	1	BEARING 22209
50	14114	1	RD SHAFT HOUSING GEAR SIDE (U/M-SERIES)
51	14117	1	STUB AXLE SHAFT SD SIDE (U/M-SERIES)
52	14130	2	DUST COVER OUTER BIG (U/M-SERIES)
53	14126	1	AIR BREATHER 1/2" BSP
54	14138	1	SIDE GEAR 17 TEETH (U/H SERIES)
55	14139	1	SIDE GEAR 26 TEETH (U/H SERIES)
56	14140	1	SIDE GEAR 36 TEETH (U/H SERIES)
57	14141	1	R D HOUSING (U/H SERIES)
58	14142	1	CROWN 22 TEETH (U/H SERIES)

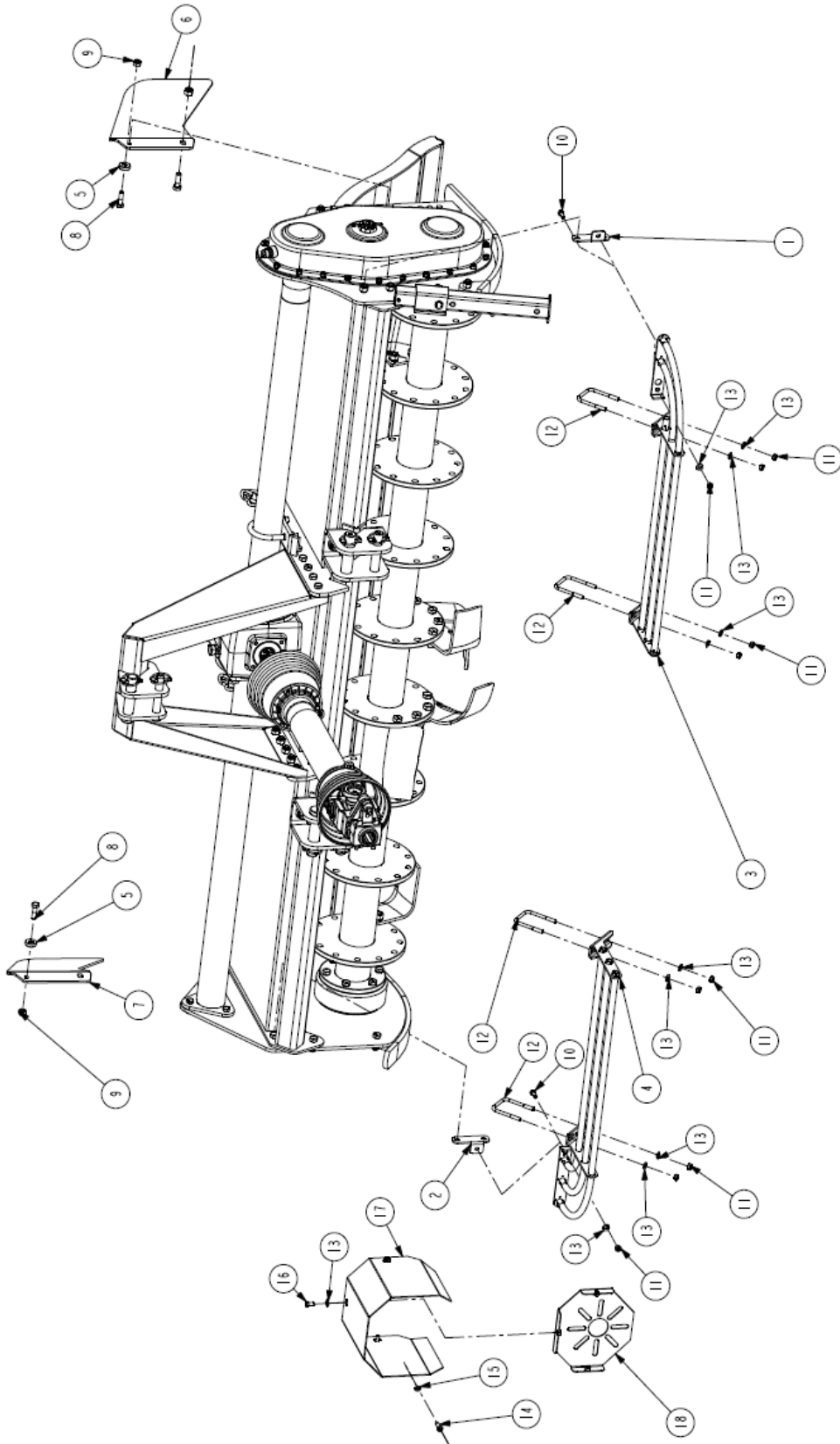
U-Series UH Rotary Tillers

59	14143	1	PINION 15 TEETH (U/H SERIES)
60	14144	1	GEAR BOX 540 RPM (U/H SERIES)
61	14145	1	R D SHAFT GEAR SIDE (U/H SERIES)
62	10229	1	OIL SEAL 35 x 72 x 8
63	14121	2	OIL SEAL 40 x 62 x 7
64	14122	1	OIL SEAL 55 x 90 x 10
65	14135	3	R D HOUSING GASKET (U/M-SERIES)
66	14098	1	SPACER DIA-52 x 40.15 x 5.5 MM
67	14104	1	SIDE STAND OUTER COMP (U/M-SERIES)
68	14105	1	SIDE STAND INNER COMP (U/M-SERIES)
69	14119	1	OIL SEAL 72 x 8
70	14120	1	SPACER 71.50 x 56 x 3
71	4663	2	"O" RING 35 X 3.5
72	19018	2	COTTER PIN (DIA 4 X 35)
73	17027	8	ALLEN BOLT M12 X 1.75 X 30 (FT)(8.8)
74	14128	1	OIL SEAL 85 X 55 X 8
75	14102	1	STUB AXLE END COVER COMP(U/M-SERIES)
76	14146	1	INPUT SHAFT 540 (U/H-SERIES)
77	14248	1	JACK SHAFT 991mm (U/H-SERIES)
78	14148	1	R D SHAFT MIDDLE (U/H-SERIES)
79	4678	2	CASTING BRACKET (REG L)
80	14177	2	BEARING 30307
81	14149	2	BEARING 32208
82	14250	1	HULL COMP 1.8M(U/H SERIES)
83	14253	1	TRAILING BOARD COMP 1.8M(U/H SERIES)
84	14252	1	ROTOR COMP 1.8M(U/H SERIES)
85	14254	1	J/S HOUSING COMP 1.8M(U/H SERIES)
86	14255	1	FULL HOUSING COMP 1.8M(U/H SERIES)
87	14155	1	BEARING 32207
88	14178	1	GEAR BOX LIFTING HOOK (U/H SERIES)
89	14157	1	R D PLATE GD COMP (U/H SERIES)
90	14179	1	S D PLATE (U/H SERIES)
91	14160	1	CHAIN COVER GD COMP (U/H SERIES)
92	14162	1	SPACER DIA-57 x 45 x 7 MM
93	14163	1	DEPTH SKID COMP RH (U/H SERIES)
94	14164	1	DEPTH SKID COMP LH (U/H SERIES)
95	14165	1	TOP MAST COMP (U/H SERIES)
96	14167	2	U BEND BOLT M14X2X86X117.5X36.5TL
97	14249	1	TRAILING BOARD ROD 1.8M(U/H SERIES)
98	14173	1	CHAIN COVER GD GASKET (U/H SERIES)
99	14174	1	HOU. FLANGE BIG GASKET(U/H SERIES)0.4MM
100	14175	1	HOU. FLANGE BIG GASKET(U/H SERIES)0.8MM

U-Series UH Rotary Tillers

101	14176	1	HOUSING FLANGE SMALL GASKET (U/H SERIES)
102	14238	1	DIPSTICK 95mm (M16 x 1.5)
103	1570	2	CASTING HITCHING BRACKET ANGLE (REG L)
104	1574	4	NYLOCK NUT M14 X 2

UH SERIES TILLER CE KIT SPARE PARTS LIST



U-Series UH Rotary Tillers

➤ UH2.1 (UH84) CE KIT VERSION TILLER SPARE PARTS LIST

ITEM	P/NUMBER	QTY.	DESCRIPTION
1	14212	1	BARRIER ASM SUPPORT CLAMP RH (UH-SERIES)
2	14211	1	BARRIER ASM SUPPORT CLAMP LH (UH-SERIES)
3	14223	1	CE BARRIER COMP. SRT-2.1 RH (UH-SERIES)
4	14222	1	CE BARRIER COMP. SRT-2.1 LH (UH-SERIES)
5	14194	2	SPACER 28 X 11 X 8 MM
6	14215	1	TB GAURD PLATE RH (UH-SERIES)
7	14214	1	TB GAURD PLATE LH (UH-SERIES)
8	6068	2	HEX BOLT M10 X 1.50 X 35
9	1298	2	NYLOCK NUT M10 X 1.50
10	8040	2	HEX BOLT M8 X 1.25 X 20
11	8181	10	HEX NUT M8 X 1.25
12	14220	4	U-BOLT M8 X 1.25 X 87 X 69 X 28TL
13	8064	13	PLAIN WASHER 8mm
14	8171	4	HEX BOLT M8 X 1.25 X 25
15	1303	4	SPRING WASHER 8mm
16	8190	3	HEX BOLT M8 X 1.25 X 15
17	1545	1	PTO SHAFT GUARD
18	1546	1	PTO SHAFT GUARD MOUNT PLATE COMP
-	14224	1	CE KIT SRT-2.1 (UH-SERIES)

12. EC DECLARATION OF CONFORMITY

In accordance with the EC Machinery Directive 2006/42/EC

The company

Tirth Agro Technology Pvt. Ltd.

(An ISO 9001:2008 Certified Company)

National Highway – 27, Nr. Bharudi Toll Plaza,
Gondal Road At.: Bhunava – 360311 Ta. Gondal,
Dist.: Rajkot. State: Gujarat- INDIA.

Phone: + 91 (2827) 661637

e-mail: info@shaktimanagro.com

hereby declares that the machine:

Type: COSMO-SHAKTIMAN BULLY Tiller

Model: U-Series UH Type

satisfies the basic safety and health requirements established by European Directive 2006/42/EC.

Harmonized standards used:

EN ISO 12100:2010

Safety of machinery - General principles for design - Risk assessment and risk reduction

EN ISO 4254-1:2009

Agricultural machinery - Safety - Part 1: General requirements

EN ISO 4254-5:2009

Agricultural machinery - Safety - Part 5: Power-driven soil-working machines

EN ISO 13857:2008

Safety of machinery - Safety distances to prevent hazard zones being reached by upper and lower limbs

Other technical standard used:

ISO 11684:1995

Tractors, machinery for agriculture and forestry, powered lawn and garden equipment - Safety signs and hazard pictorials - General principles

Rajkot,

Ashwin Gohil / Hasmukh Gohil

Chairman / Managing Director

